

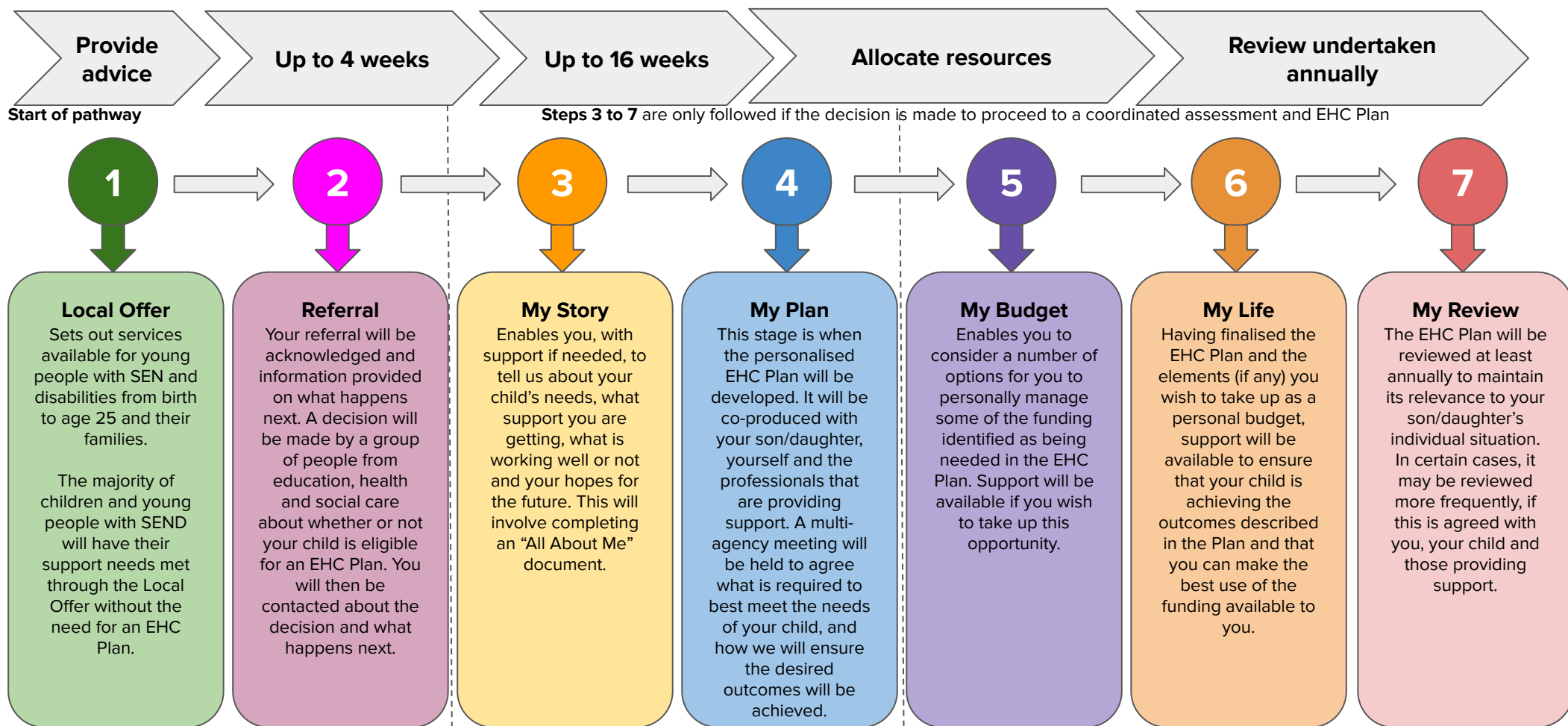
Sutton's Special Educational Needs department (SEND) Education, Health & Care Plan (EHCP) Pathway

In September 2014, statements of Special Educational Needs (SEND) were replaced by Education, Health and Care Plans (EHCPs). The EHCP will provide the same statutory protection as the statement of SEND. However, because it will cover from birth to age 25, it will extend the rights and protection to young people in further education and training. From 1st April 2015 the provisions applying to detained children and young people commenced.

The aim of this process is to make meaningful differences to the lives of children, young people and their families.

A personalised pathway

Maximum duration for the statutory element of the pathway is 20 weeks



Youth custody: Principles of the new approach

The London Borough of Sutton SEND department is still responsible for arranging a young person's special educational provision while they are in custody.

The child or young person receives appropriate special educational provision and health provision in custody.

If Special Educational Needs (SEN) are identified while in custody, the SEND department will ensure this is considered when making their decision to grant an Educational Health Care Plan Needs Assessment (EHCPNa). Identifying need and ensuring that provision continues on release will help a young person's resettlement.

What happens next?

You will have key people who will support you in relation to Education, Training & Employment (ETE) while you are in custody and to ensure you have a meaningful resettlement plan in place. These people will be:

- YJS Lead Education & Employment Worker
- YJ Case Manager
- EHCP Coordinator

Your ETE worker will:

- Talk to your case manager to check you are engaged in education and how you are doing;
- Regularly update your EHCP Co-ordinator on how you are doing;
- Find out your views about what you think is going well and what could be better;
- Find out what your hopes and career aims are for the future;
- If you are finding education difficult and learning difficulties have been identified, a referral for an EHCP Needs Assessment will be made;
- Work with you to prepare for the EHCP, if the SEND department have agreed to assess you for one;
- Nearer your release date, help you to think about resettlement and make a plan;

Your EHCP Coordinator will:

- Talk with you and the YJS;
- Be your contact in the future and on your release to help and advise you into Education, Training or Employment that suits you;
- If an Assessment for an EHCP is agreed, they will check whether advice from other people is needed;
- Write up the EHC Plan, collate and distribute all relevant information to you and to those who will attend a meeting to discuss the draft plan
- Issue the final plan and talk to the YOI to check which of the outcomes can be achieved while in custody.

More information is available from the ETE worker at the YJS, who can be contacted on 020 8770 5754, or by contacting SEND on 020 8770 6507.

Sutton Youth Justice Service



Sutton's
Education,
Health and Care
Plan Pathway
(EHCP)

**A personalised pathway
for young people in custody, who may
have Special Educational Needs, to ensure
that they are given the best opportunities
to progress in future Education, Training
and employment.**

In partnership with the Local Authority SEND Team

