

Further resources, information and advice

For general information or advice about adoption or fostering you can contact the British Association & Fostering at the below address

British Association of Adoption & Fostering (BAAF)

6-10 Kirby Street

London

EC1N 8TS

Tel: 0207 421 2600

Website: www.bAAF.org.uk

Email: mail@bAAF.org.uk

You can contact Ofsted at:

Ofsted, Picadilly Gate

Store Street

Manchester

M1 2WD

Tel: 0300 123 1231

Website: www.ofsted.gov.uk

Email: enquiries@ofsted.gov.uk



St.Helens Council

Contact Centre

Wesley House

Corporation Street

St.Helens

WA10 1HF

Tel: 01744 676789

Minicom: 01744 671671

→ www.sthelens.gov.uk/contactus

Please contact us to request translation of Council information into Braille, audio tape or a foreign language.

A Children's Guide To
Fostering



St.Helens
Council



St. Helens
Council

St. Helens Fostering Team

Atlas House
Corporation Street
St. Helens

01744 671199

Your Social Worker's Name is:

His/Her Telephone Number is:

You can also speak to:-

Any questions?

How are you feeling?

Draw your own

Eddie the Elephant!

Can you spot the sneaky mice?

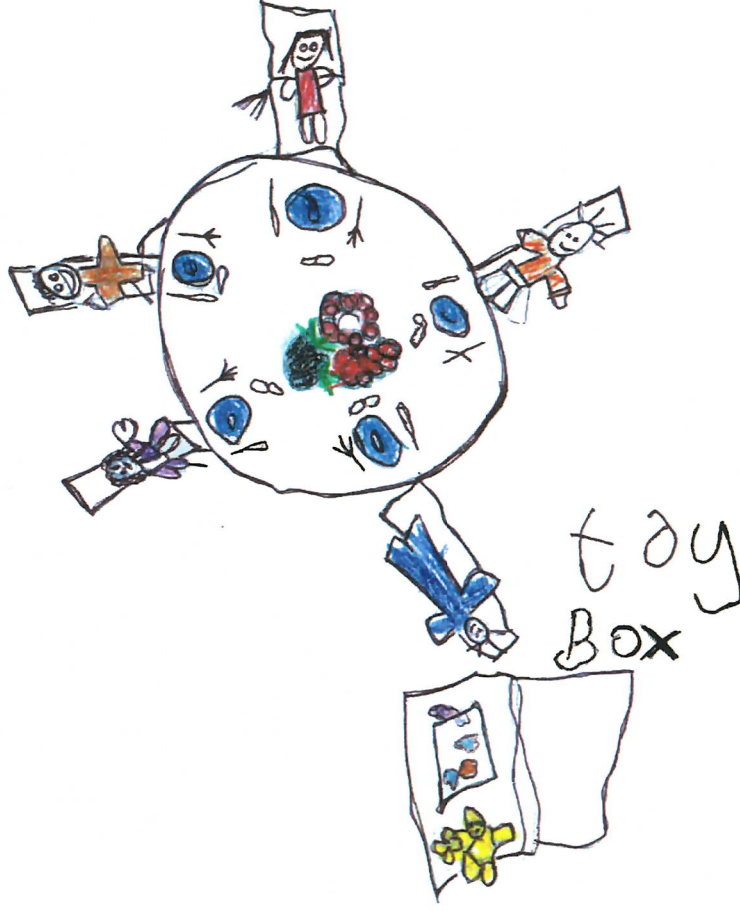


This is a story of Eddie the Elephant, who lived with his family in the jungle. Sometimes Eddie the Elephant is very happy, but sometimes he is sad.



One day he is very sad, because his family can no longer look after him.

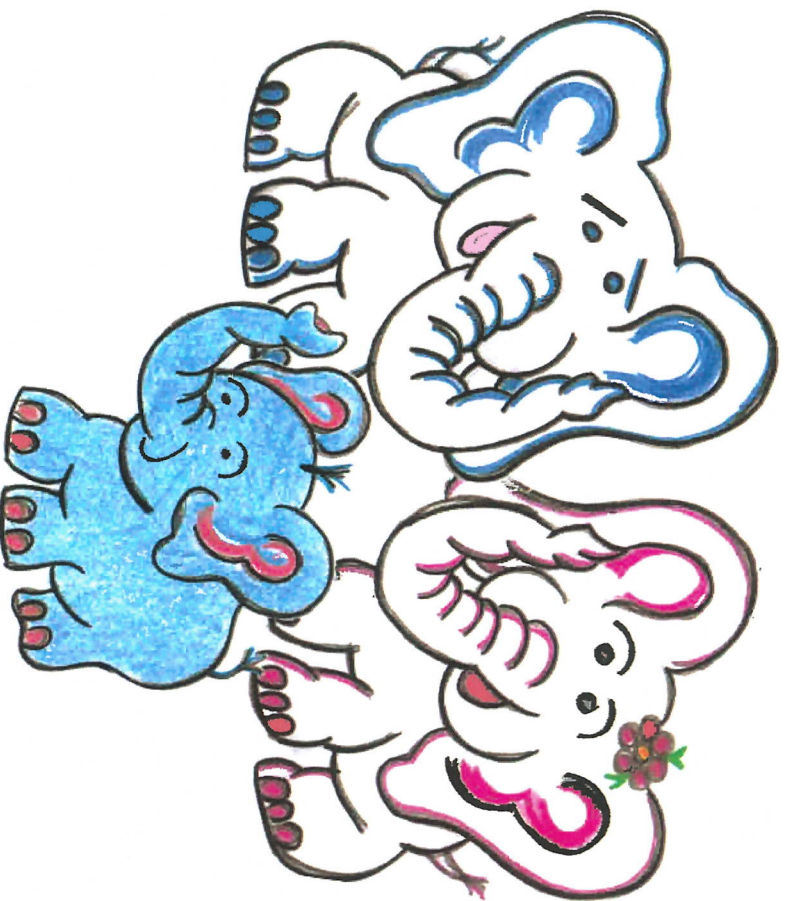
Big tears fall from his eyes, and his long trunk drooped down to the ground.



Drawing by Ami aged 5

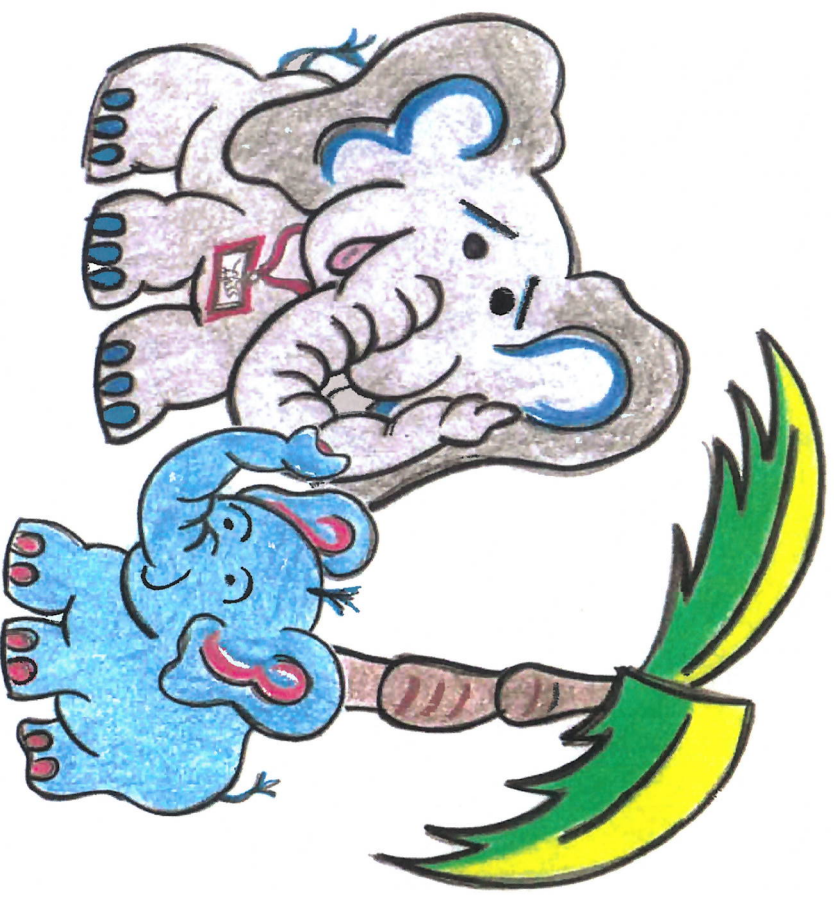
Eddie the Elephant went with the social worker elephant to the new jungle to be looked after by foster carers.

This is what is also happening to you. You are in the care of grown-ups called foster carers and are going to live in a new home, just like Eddie.



Sometimes they go to stay for weeks or months or even longer.

Do you remember that Eddie the Elephant has to leave his home in the jungle and go and live over the river?



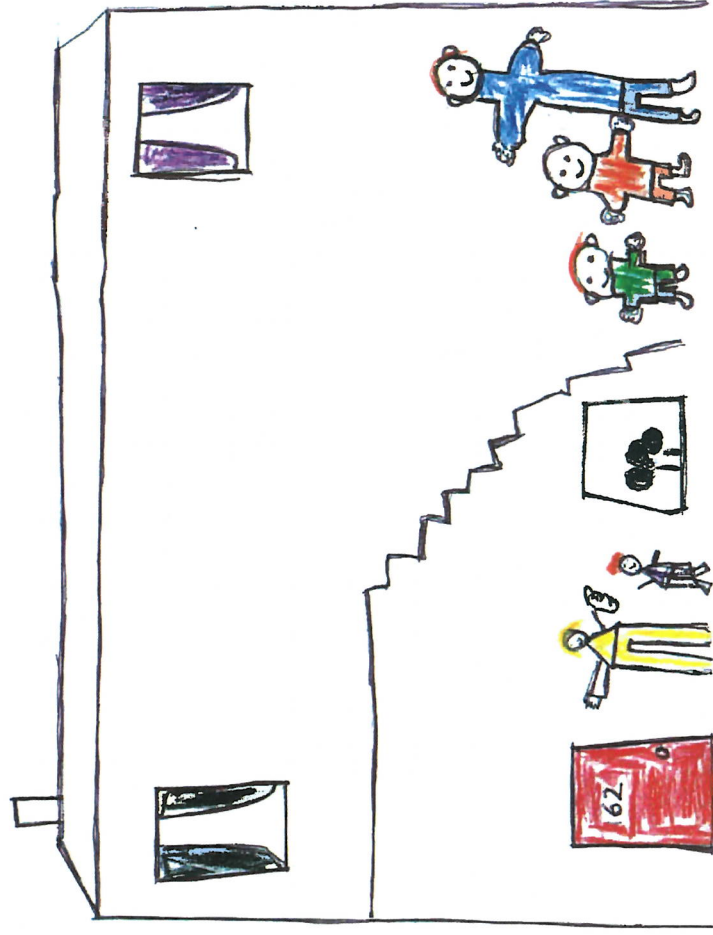
Eddie the Elephant needs someone to keep him happy, healthy and safe.

So a grown up elephant called a social worker comes to help. They take Eddie to another safe jungle over the river.

The social worker finds some kind grown-up elephants called foster carers for Eddie to stay with.

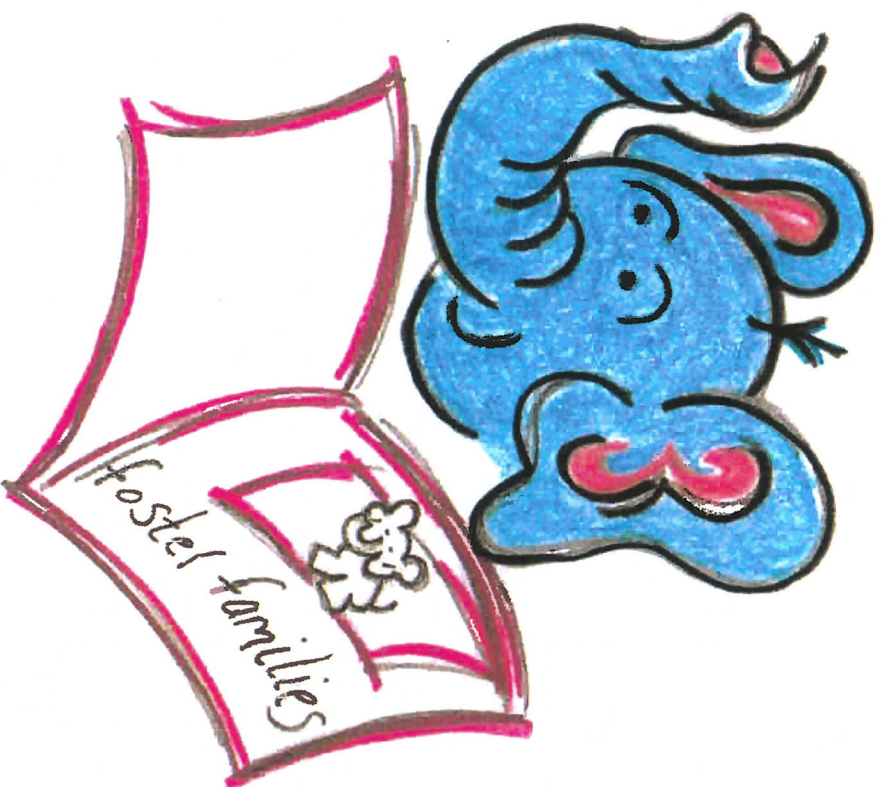


Look, this foster family have elephants to play with, talk to and have fun with. Everyone is kind to Eddie, but he sometimes feels afraid and upset, and wants to go home to his own jungle.

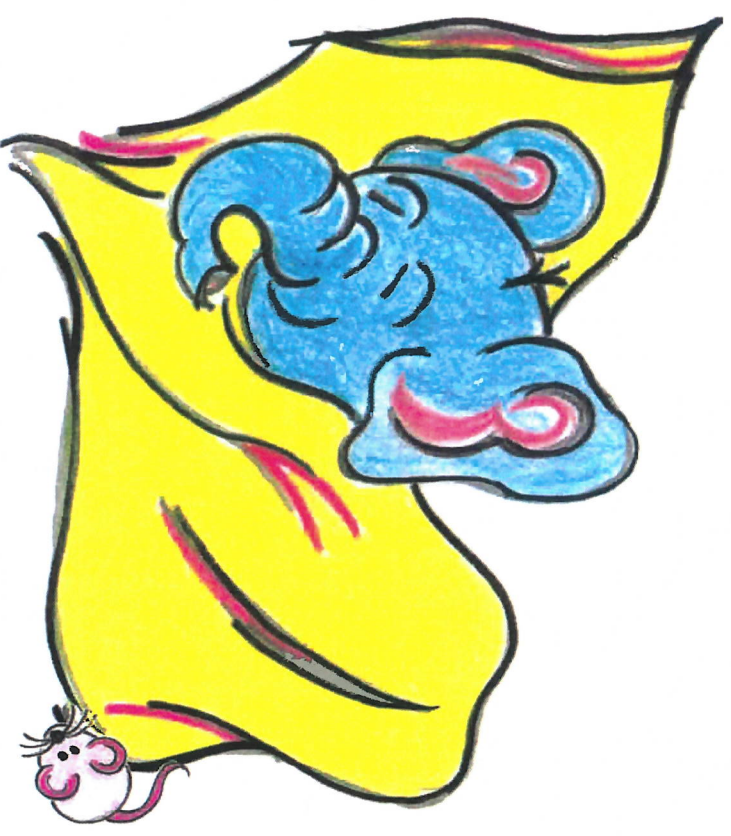


Drawing by Reece aged 7

Sometimes little girls and boys are like Eddie. Their families are unable to care for them, so they go to live with other people for a while.



The social worker elephant tries very hard to get Eddie back to his home to his birth family. Sometimes no matter how hard they try it may not work out. If this happens then they will help Eddie to find a forever family.



The foster carer elephants look after Eddie. They give him a nice room, and a warm bed and they tuck him up at night, which makes Eddie feel safe and so much better.



Eddie begins to find his way around and to play with other elephants. He does not feel so sad now, and his long trunk is not so droopy anymore.

Eddie is getting used to living in the new jungle over the river.



The social worker elephant who took Eddie to the safe jungle makes plans for Eddie to see his family whenever he can, and Eddie still gets to see his own friends from where he came from.