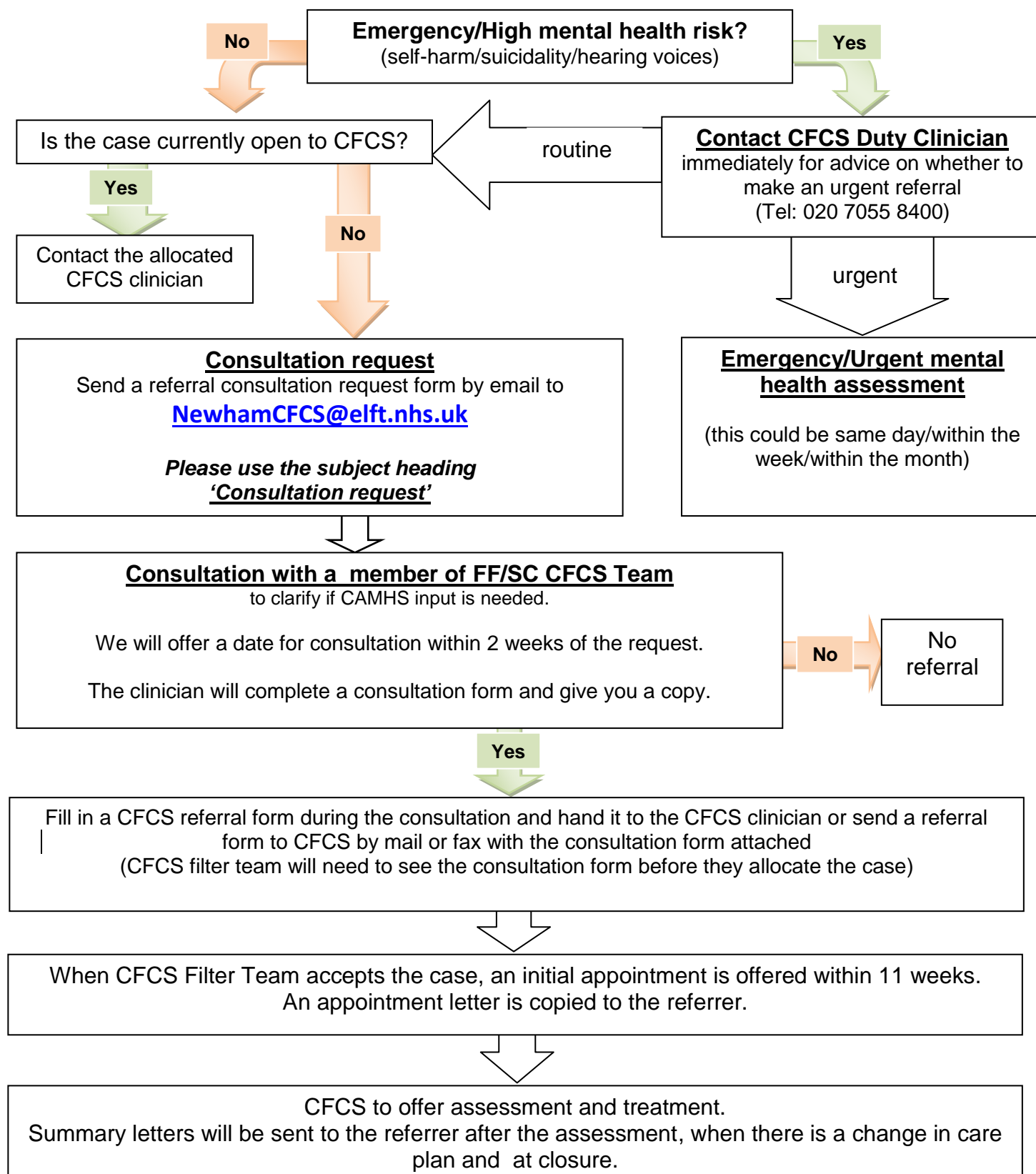


CFCS Referral Consultation Flowchart for Assessment Teams

Families First/Social Care CFCS Team

Newham CFCS, York House, 411 Barking Road, Plaistow, London E13 8AL Tel: 020 7055 8400 Fax: 020 7055 8401



- Queries about cases already open to CFCS should be directed to the allocated CFCS worker. If you do not know who the worker is, please ring the CFCS reception (Tel: 020 7055 8400).
- Routine referrals sent directly to CFCS without prior consultation with Families First/Social Care CFCS Team will be redirected for a consultation
- Referrers need to obtain consent from the families prior to the referral (from parents for under 16, from young people if 16+).
- CFCS reception is open from Monday to Friday, 9am-5pm. In case of emergency out of office hours, families should call GP out of hours service, call an ambulance or take the young person to A&E.