

PREM: Partnership Reduction, Exploitation and Missing

Briefing for Children's Services



Introduction:

- PREM is an all age, police led, multiagency, outcome focussed forum.
- The purpose of PREM is to reduce the risk of exploitation and vulnerabilities associated with missing episodes through a collaborative partnership approach.
- PREM seeks to address the risk of exploitation and high-risk missing episodes by focusing on the reduction of risk factors, understanding perpetrator behaviours, and identifying hot spot locations.

Meeting format

- PREM meetings are chaired by a Detective Inspector from the Prevention Department (Northumbria Police) to ensure a corporate and consistent approach.
- A deputy Chair from Northumberland Adolescent Services (NAS) is appointed in the absence of the Detective inspector.
- A PREM meeting will take place monthly when required (if there are no referrals the PREM meeting will not take place).

Children and Young people discussed at PREM need to reside in Northumberland, if there is a concern about a young person residing out of county, then the police force in that area must be approached.

How to refer

If the child is **not open** to Children Services:

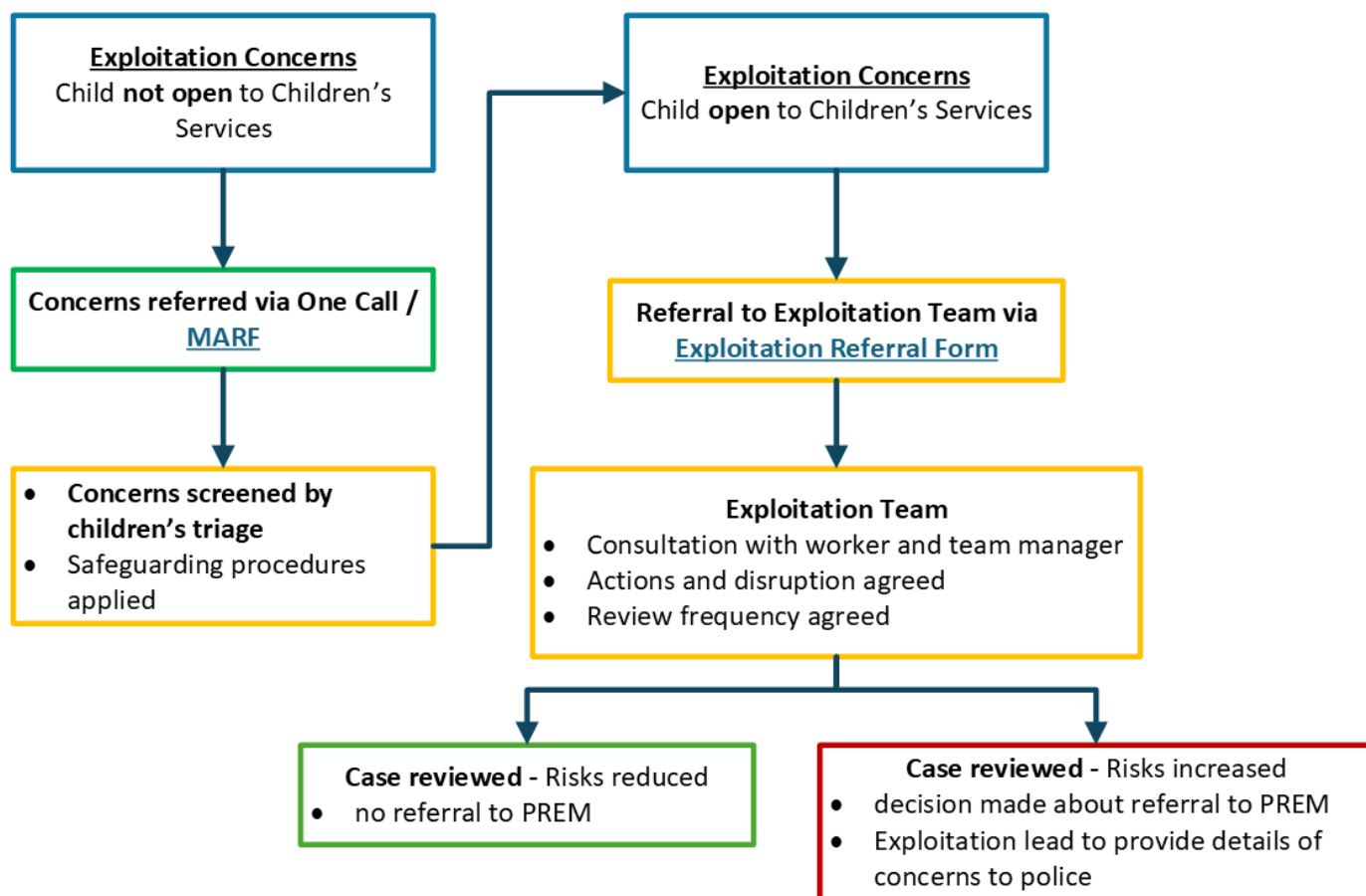
- Referral should be made to children's social care via [Multi Agency Referral Form](#) (choose 'social work' when prompted)

If the child is **open** to Children Services:

- An exploitation consultation should take place and a decision made (within a follow up consultation and a period of review with the authorising manager) as to whether the child is referred to PREM. [Exploitation Service Referral Form](#)
- The exploitation lead will discuss the child with the gatekeeper of PREM to ensure all safeguarding and disruption measures have been completed before submitting a referral to PREM.
- The exploitation lead will submit the referral to PREM based on the information gathered from the final consultation. They will also gather the details of who needs to be invited and request attendance at the PREM meeting.

If there is disagreement on the referral to PREM, then senior management will make the overall decision on the referral

**PREM - PARTNERSHIP REDUCTION EXPLOITATION MISSING
Pathway**



PREM does not replace or change the Northumberland Child and Adult Safeguarding Partnership (NCASP) Safeguarding Procedures.

