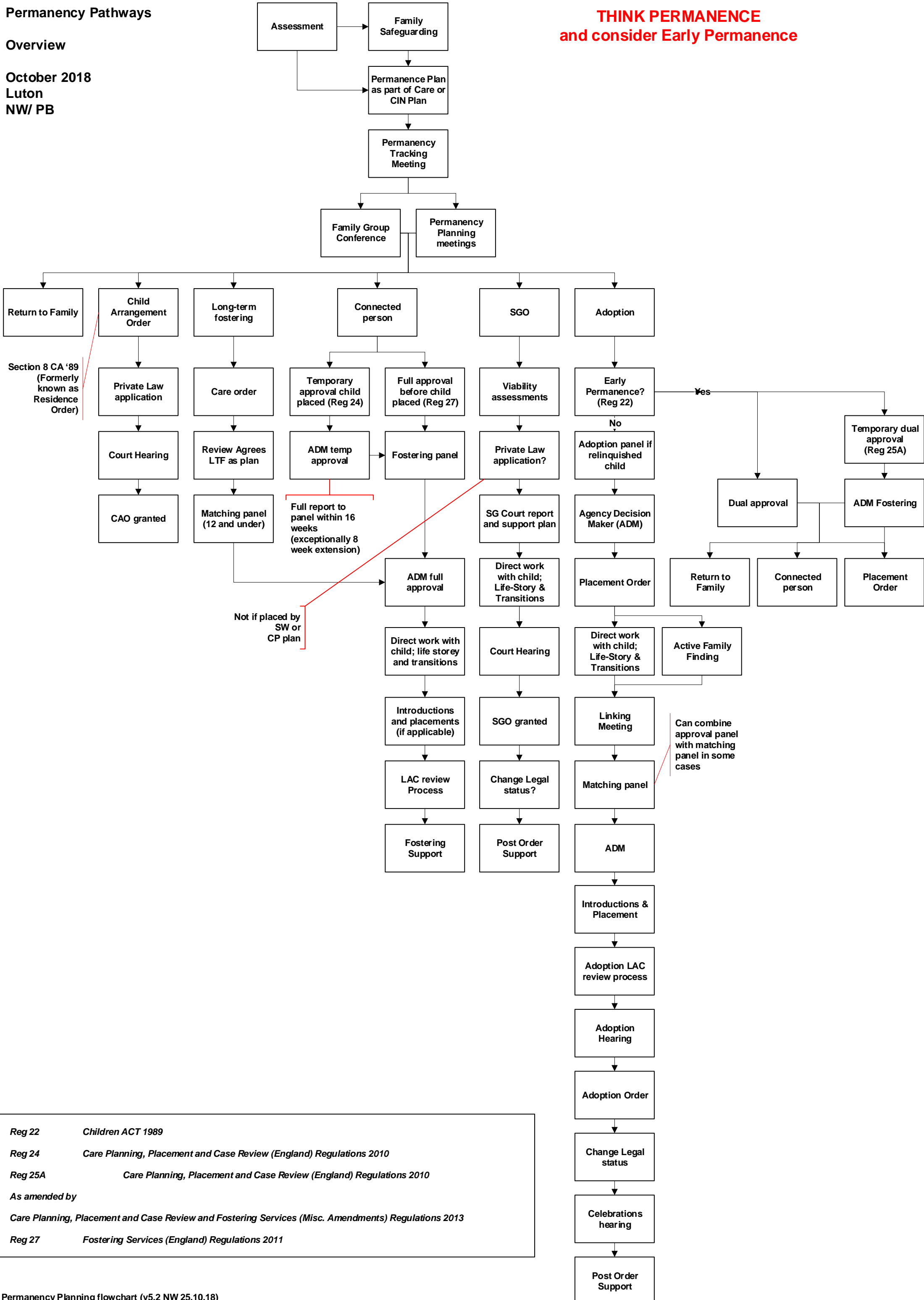


Permanency Pathways

Overview

October 2018
Luton
NW/ PB

**THINK PERMANENCE
and consider Early Permanence**



Reg 22 Children ACT 1989
 Reg 24 Care Planning, Placement and Case Review (England) Regulations 2010
 Reg 25A Care Planning, Placement and Case Review (England) Regulations 2010
 As amended by
 Care Planning, Placement and Case Review and Fostering Services (Misc. Amendments) Regulations 2013
 Reg 27 Fostering Services (England) Regulations 2011