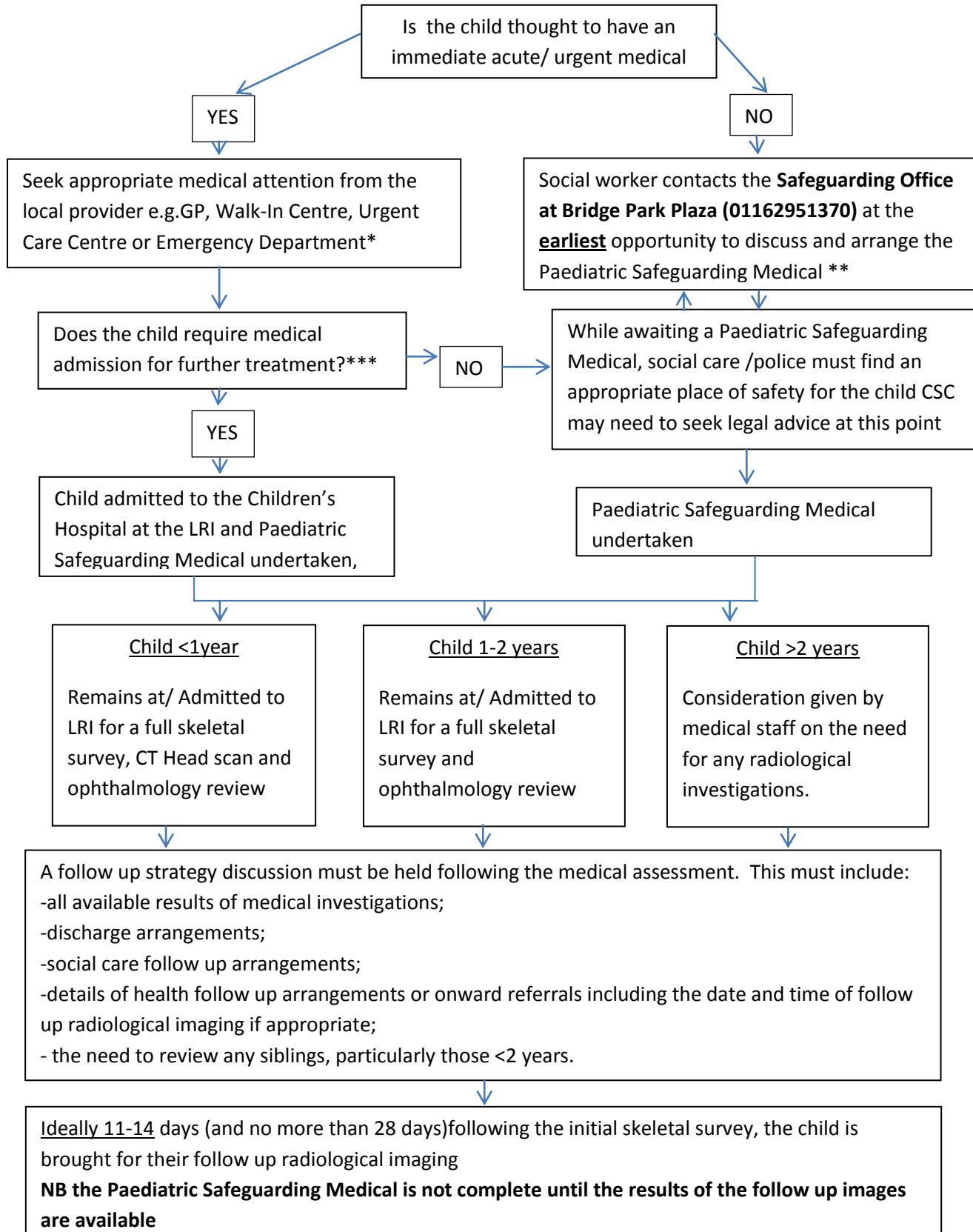


## A Quick Guide to Accessing Paediatric Safeguarding Medicals

Whenever there is reasonable cause to suspect that a child is suffering, or is likely to suffer, **Significant Harm** there should be a Strategy Discussion involving children's social care, the police, health and other bodies such as the referring agency. This might take the form of a multi-agency meeting or phone calls and more than one discussion may be necessary. A Strategy Discussion can take place following a referral or at any other time, including during the assessment process.



\*Please refer to the guidance on medical input in Suspected Child Sexual Abuse

\*\*Community Paediatricians are available for advice during office hours (Mon-Fri 0900-1700, except B/Hols)

\*\*\* The UHL Children's Assessment Registrar can be contacted for URGENT enquiries outside office hours.