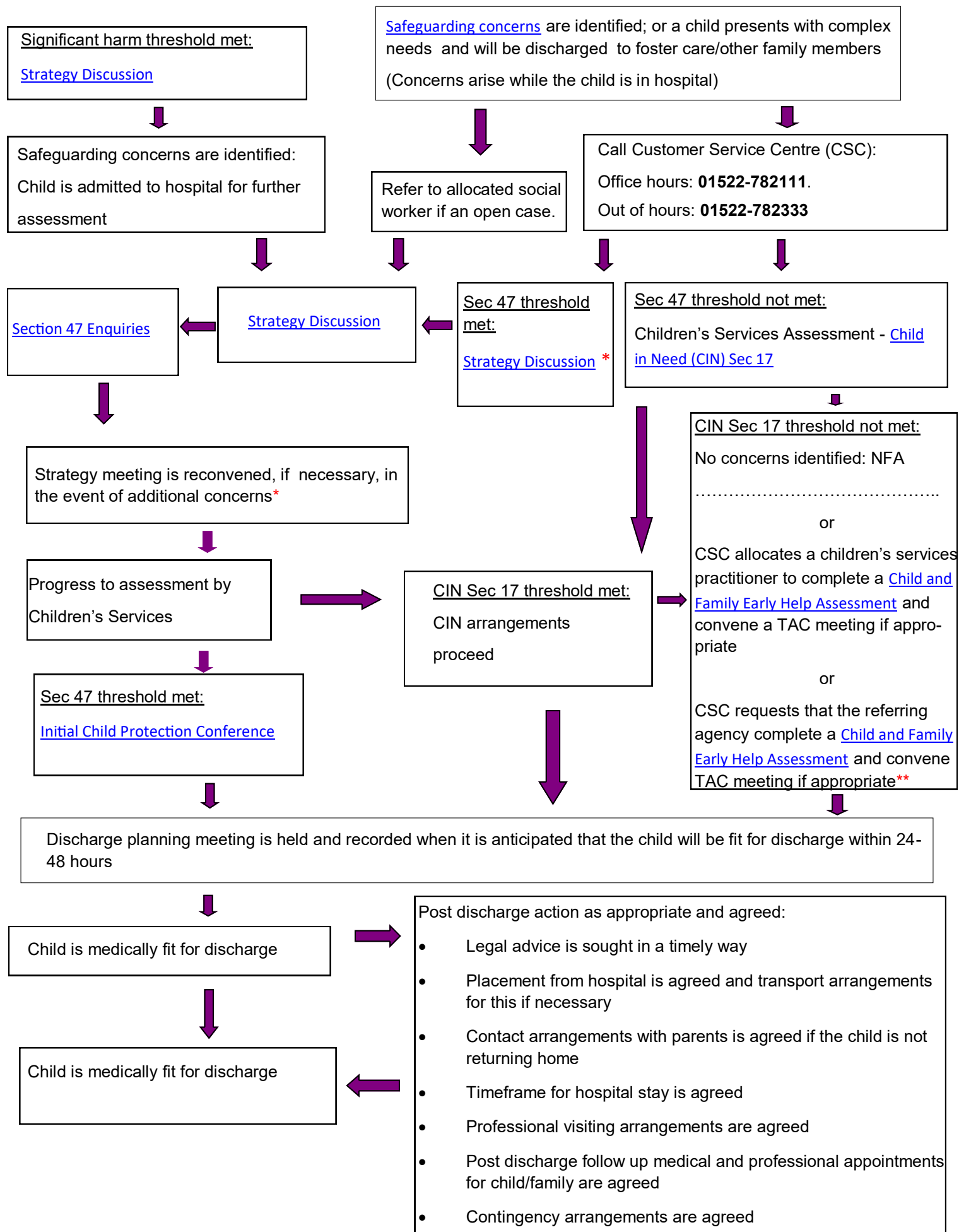


Discharge Planning from Physical Healthcare Hospitals when there are Safeguarding Concerns about a Child

Medical assessment and intervention will occur as necessary, at all stages of discharge planning

When a baby is born and is subject to legal proceedings a Discharge Planning Meeting **MUST** be held



* If the child is in hospital this must include the consultant paediatrician

** If a TAC meeting is convened this can also double as the Discharge Planning Meeting.