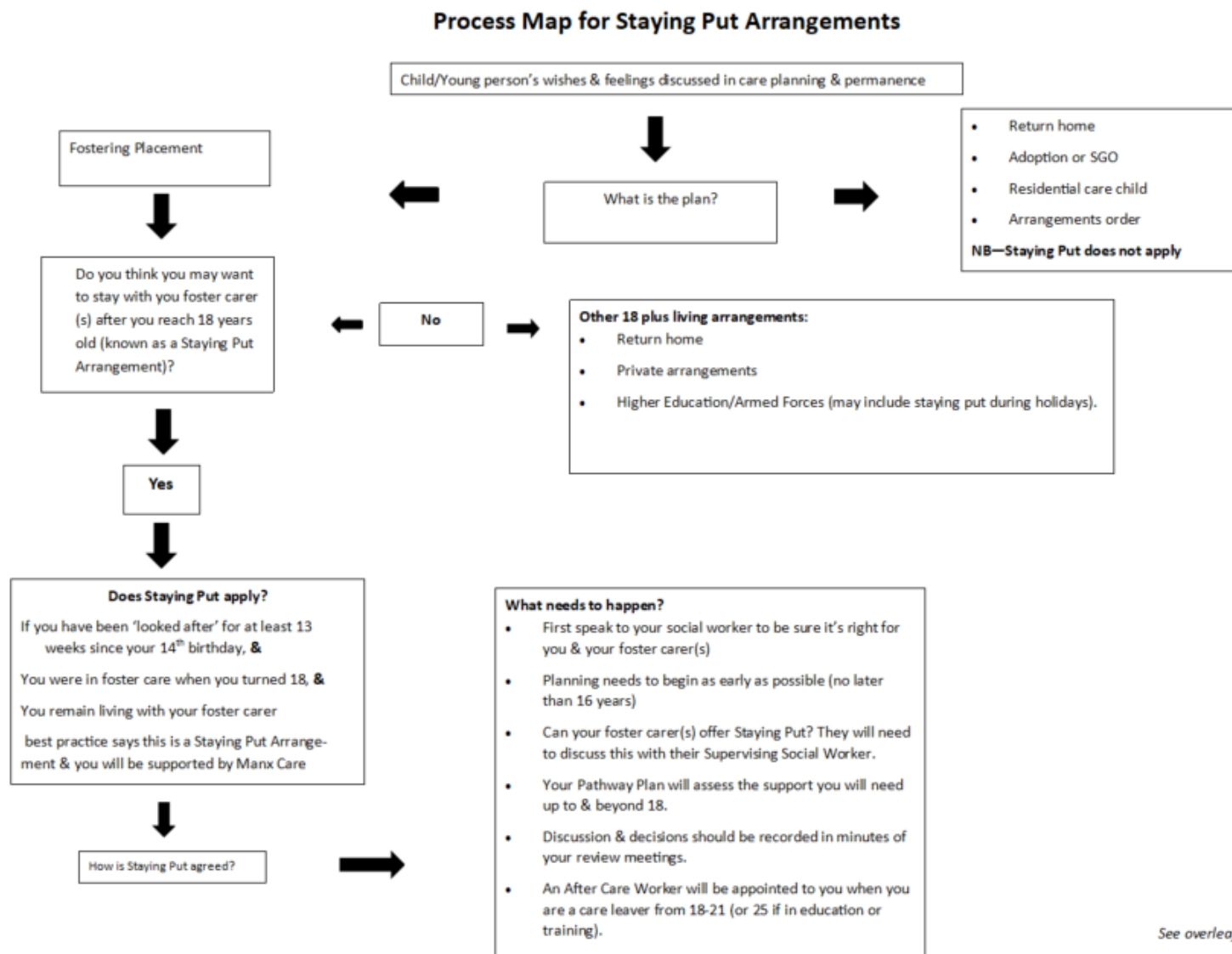


Appendix 3: Staying Put Process Map



Your pathway plan will incorporate your care plan & should look at what you need when you leave care, for example, where you will live, support to continue education or begin work, your independence skills, budgeting, your short-term needs & hoped for the future. This is reviewed regularly.

The pathway plan & placement plan will focus on what needs to happen before Staying Put begins at 18 including:

Staying Put Arrangement, safeguarding arrangements

You will need to have a DBS check if your former foster care still offers foster placements

The type of after-care support you will be entitled to from 18-25 years including financial support & welfare benefit entitlements

Involvement in decisions & maintaining your relationships

Plans for ending a Staying Put arrangement & your transition to living independently, agreed timescale, accommodation (including setting up the leaving care grant).

If you are supported by Adult Social Work as a young adult with additional needs, you will still have a pathway plan, a personal advisor & access to leaving care support.



At 18 you are legally an adult & no longer in foster care, but a Staying Put Arrangement can support you to carry on living with your foster carer(s) until you are 25. You will be entitled to continued after care support until the age of 25.