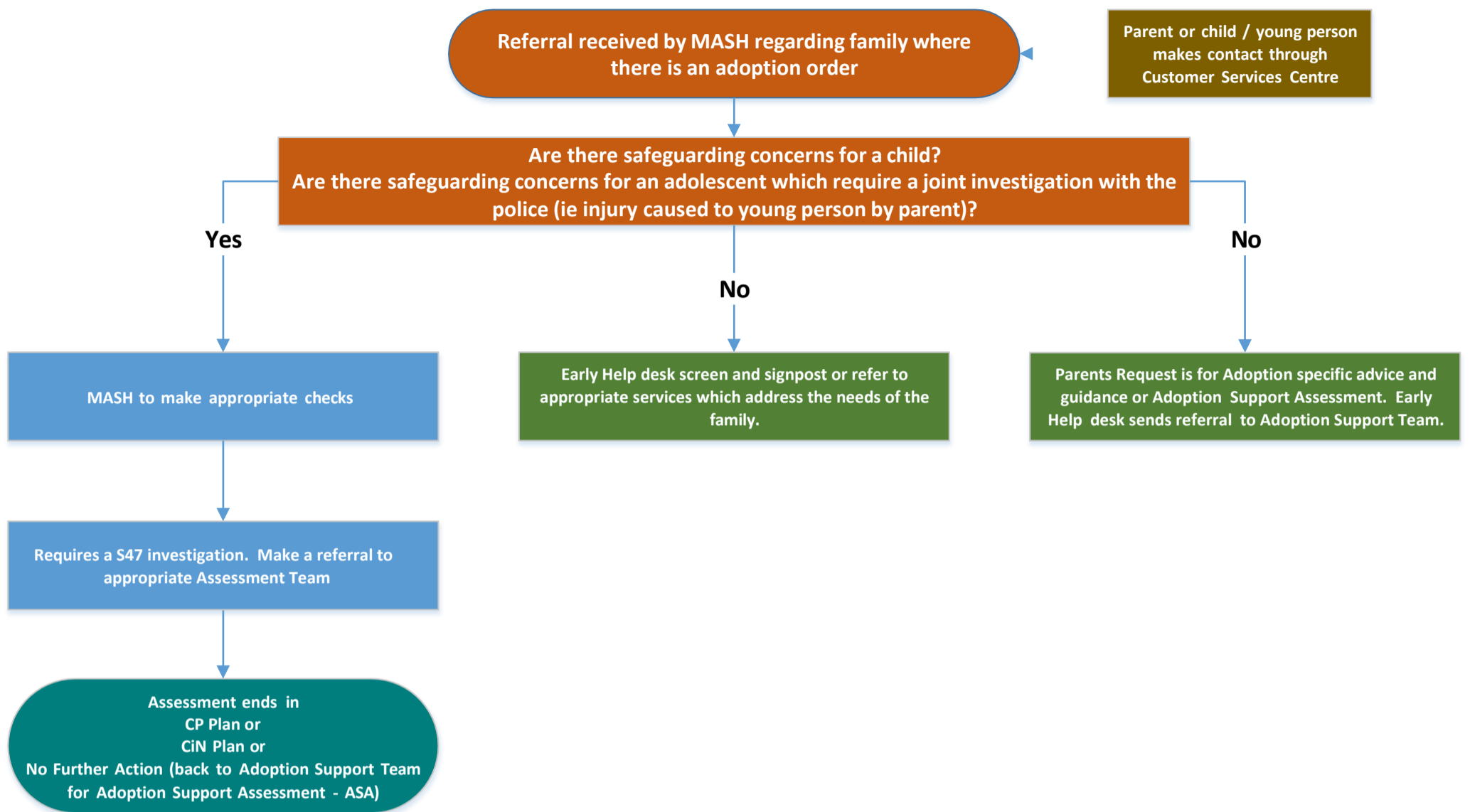
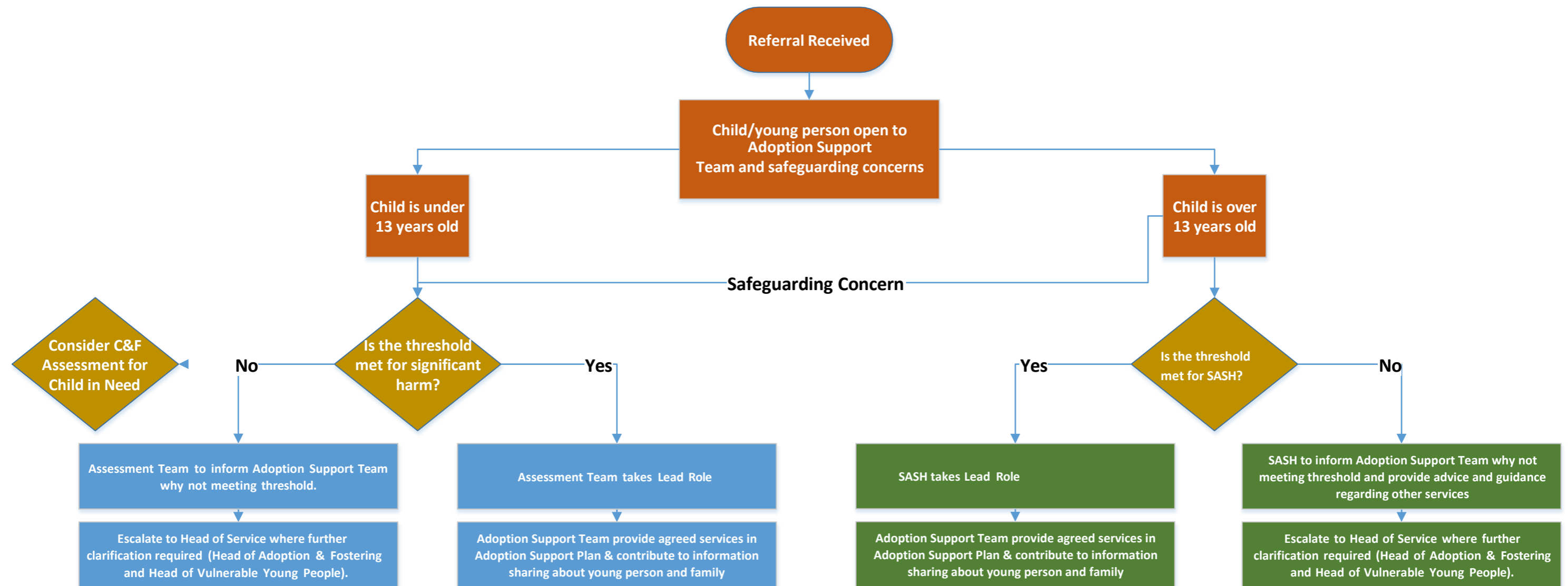


Response to contacts and referrals where there is an adoption order in place



Safeguarding referrals for children/young people open to the adoption service



Significant Harm

- The Children Act 1989 introduced Significant Harm as the threshold that justifies compulsory intervention in family life in the best interests of children.
- Physical Abuse, Sexual Abuse, Emotional Abuse and Neglect are all categories of Significant Harm.
- There are no absolute criteria on which to rely when judging what constitutes significant harm. Sometimes a single violent episode may constitute significant harm but more often it is an accumulation of significant events, both acute and longstanding, which interrupt, damage or change the child's development.

See: [Section 47 Enquiry \(trixonline.co.uk\)](http://trixonline.co.uk)

SASH 'in need' criteria

- A young person is experiencing difficulty in family relationships where significant risk of family breakdown or family breakdown has happened;
- A young person is exhibiting high-risk behaviour – risk of self-harm or harm to others;
- Young person becoming involved in offending behaviour;
- Young person at risk of child sexual exploitation (section 17 – child in need);
- 16/17 year old at risk of homelessness (section 20 – request for accommodation). See: [Microsoft Word - JHP 2021 - Final Signed Document \(proceduresonline.com\)](#)

A Family Group Conference
to engage families & young person may avoid or reduce the need for S20
Accommodation or prevent family breakdown.
Homeless 16/17 year olds – refer to Joint Housing Protocol

Where a disruption takes place after an Adoption Order has been made, it is Children's Services Policy that a
Disruption Meeting should be offered as part of the adoption support provided to the child and adoptive family
– see HCC Social Work Procedures Manual for Disruption of Adoptive and Long Term Foster Placements (section
8.11)
Adoption Support Team to consider need for an Adoption Disruption Meeting