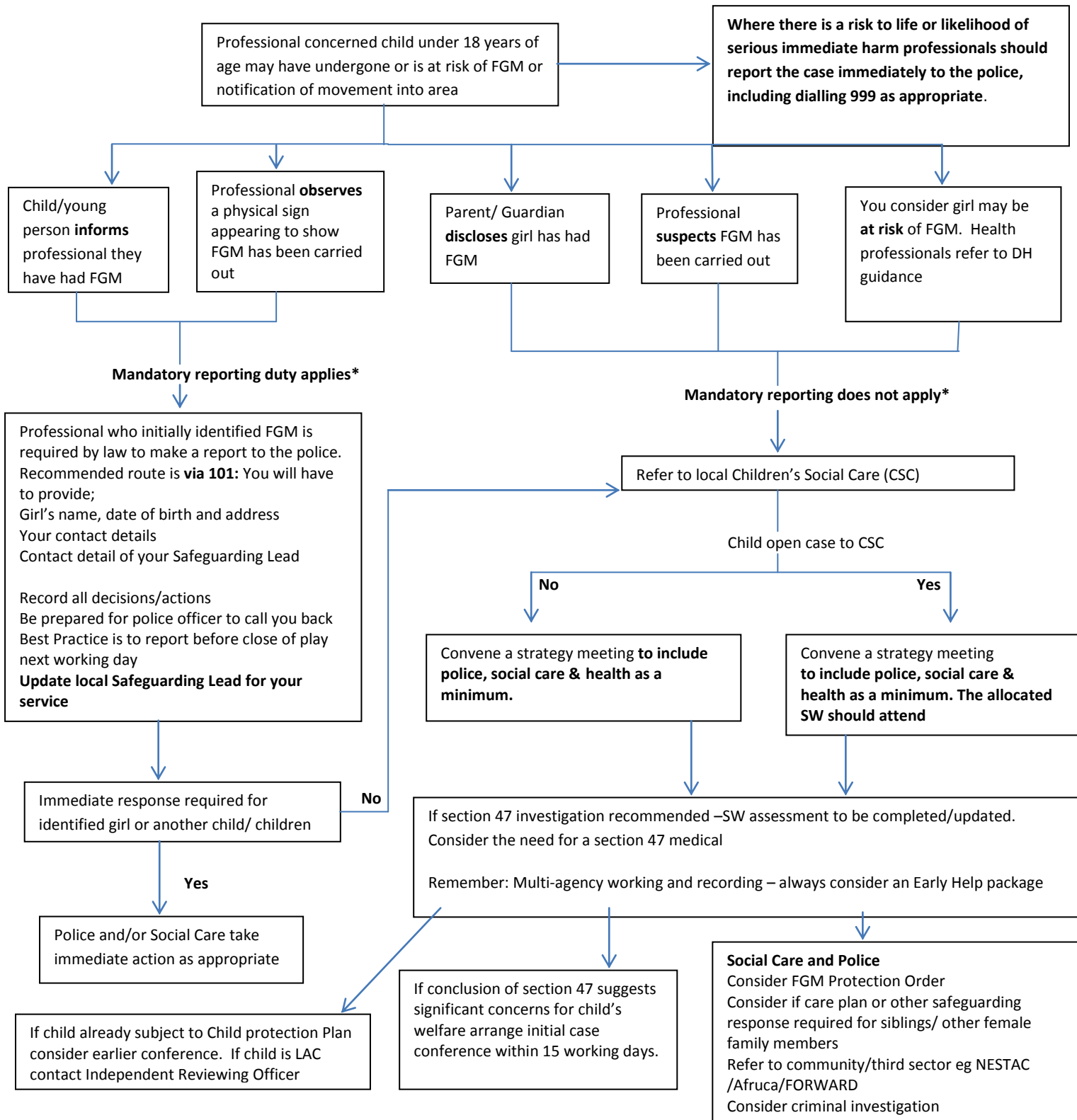


Female Genital Mutilation Greater Manchester Pathway



Home Office Mandatory Reporting

Guidance: https://www.gov.uk/government/uploads/system/uploads/attachment_data/file/469448/FGM-Mandatory-Reporting-procedural-info-FINAL.pdf

DH Guidance:

https://www.gov.uk/government/uploads/system/uploads/attachment_data/file/418564/2903800_DH_FGM_Accessible_v0.1.pdf