



Working Together 2023 places a 'shared and equal duty' on Gloucestershire Integrated Care Board, Gloucestershire Constabulary and Gloucestershire County Council for the welfare and safeguarding of Gloucestershire's Children. This report has been created with the assistance of Generative AI tools and sets out the activity of the Statutory Partners and of relevant agencies during the period.

## Gloucestershire Safeguarding Children Partnership



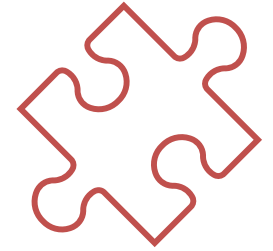
# Gloucestershire Safeguarding Children Partnership Executive Yearly Report 2024 -2025



# Gloucestershire Safeguarding Children Partnership



## Introduction



### Strengthening Safeguarding Across Gloucestershire

Established in April 2019, the Gloucestershire Safeguarding Children Partnership (GSCP) has continued to evolve and enhance its safeguarding arrangements. In line with the statutory guidance outlined in *Working Together to Safeguard Children*, the Partnership has regularly reviewed and updated its Published Arrangements to ensure they remain robust and effective. The fourth edition of these arrangements was published in December 2024, reaffirming the GSCP's enduring commitment to protecting children across the county.

Throughout the reporting period (1 April 2024 – 31 March 2025), the GSCP Executive has remained steadfast in its commitment to aligning all arrangements with the most up-to-date statutory guidance, including *Working Together 2023*. This period was marked by significant inspection activity across partner organisations and the release of key national guidance, both of which have shaped the Partnership's strategic direction and operational priorities.

### Evolving Arrangements and Leadership

The latest updates to the Published Arrangements reflect changes in senior leadership within the Partnership, as well as the refinement of key procedures. These developments have been informed by learning from local reviews, audits, and the early implementation of *Working Together 2023*. The publication of the fourth edition in December 2024 represents a significant milestone in the GSCP's continuous improvement journey.

### Enhancing Data and Intelligence Capabilities

The GSCP remains committed to strengthening its use of data, intelligence, and analysis to support its safeguarding functions. The Business Unit have implemented a Partnership Analysis Report to collate all activity and data measuring impact from across the Partnership. This document has supported the GSCP Executive and has had a notable impact on the collection and use of Agency information, specifically partnership data.



## Executive Summary

The Gloucestershire Safeguarding Children Partnership (GSCP) has continued to deliver strong multi-agency safeguarding arrangements throughout the 2024–2025. In line with Working Together to Safeguard Children 2023, the Partnership has updated its Published Arrangements to reflect changes in leadership and statutory guidance, reaffirming its commitment to protecting children across the county.

Safeguarding activity across the partnership remained high as demonstrated by the figures to the right.



A key development this year was the enhancement of data intelligence through tools such as the Partnership Analysis Report and Master Action Log, which have improved oversight and accountability.

In addition, the GSCP conducted five Serious Incident Notifications, resulting in three Rapid Reviews. These reviews identified recurring themes including domestic abuse, neglect, child exploitation, and non-accidental injury. Eight recommendations were made, focusing on policy updates, multi-agency training, and improved escalation protocols.



The Partnership completed four multi-agency audits, including the NSPCC Child Sexual Abuse Snapshot, Operation Encompass, Child P multi-agency case audit. These audits strengthened strategic oversight, improved inter-agency coordination, and informed future planning.

The Annual Report has highlighted significant engagement with the Education Sector from the Executive to Education Settings across county. With best practice work examples through the Gloucestershire Safeguarding Education Partnership Traded Service.

Looking ahead, the GSCP has set strategic priorities for 2025–2028, focusing on Harm Outside the Home, Child Sexual Abuse, and Proportionate Intervention. These priorities are underpinned by a commitment to continuous improvement and ensuring that safeguarding arrangements reflect both local needs and national expectations. Another focus for the Partnership will be projects relating to capturing the voice of the child.

7,995  
referrals to  
Children's  
Social Care

1,675  
children placed  
on Child  
Protection  
Plans

33,372  
contacts to the  
Multi-Agency  
Safeguarding Hub

330  
Children  
reported  
missing

2,178  
children were  
supported  
through Child in  
Need Plans



## Partnership Leads

Working Together to Safeguard Children 2023 stipulates that the Lead Safeguarding Partner's (Local Authority, Police, and Integrated Care Board) Chief Officers are jointly accountable for setting and overseeing effective local safeguarding arrangements to protect children.

### Gloucestershire's Lead Safeguarding Partners (LSP's):



**Mary Hutton**

Chief Executive

NHS Integrated Care Board



**Pete Bungard**

Chief Executive

Gloucestershire County Council



**Maggie Blyth MA, BA (Hons)**

Interim Chief Constable

Gloucestershire Constabulary

Under Working Together to Safeguard Children 2023, Designated Safeguarding Partners support the Lead Safeguarding Partners by helping to deliver and coordinate local safeguarding arrangements. They act on behalf of their organisations to ensure effective multi-agency collaboration and implementation of safeguarding duties. In Gloucestershire Education has a DSP role on the Executive. During this period the Chair transitioned between ACC Mathieson and ACC Ocone. Furthermore, since April 2025 Mary Hutton and Pete Bungard have retired and the Partnership have welcomed new Lead Safeguarding Partners as reflected in our current Published Arrangements.

### Gloucestershire's Designated Safeguarding Partners (DSP's) The GSCP Executive



**Arman Mathieson:**

Assistant Chief Constable.

Gloucestershire Constabulary

Chair of the GSCP Executive



**Marie Crofts:**

Chief Nursing Officer.

Gloucestershire Integrated Care Board



**Kirsten Harrison:**

Director of Education.

Gloucestershire County Council



**Ann James:**

Director of Children's Services.

Gloucestershire County Council

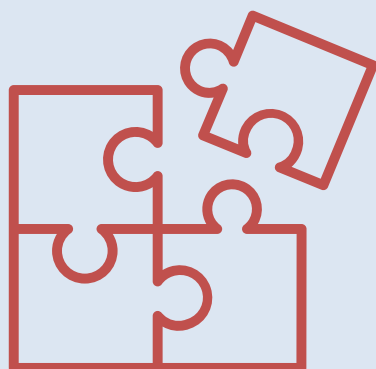


**Richard Ocone:**

Assistant Chief Constable.

Gloucestershire Constabulary

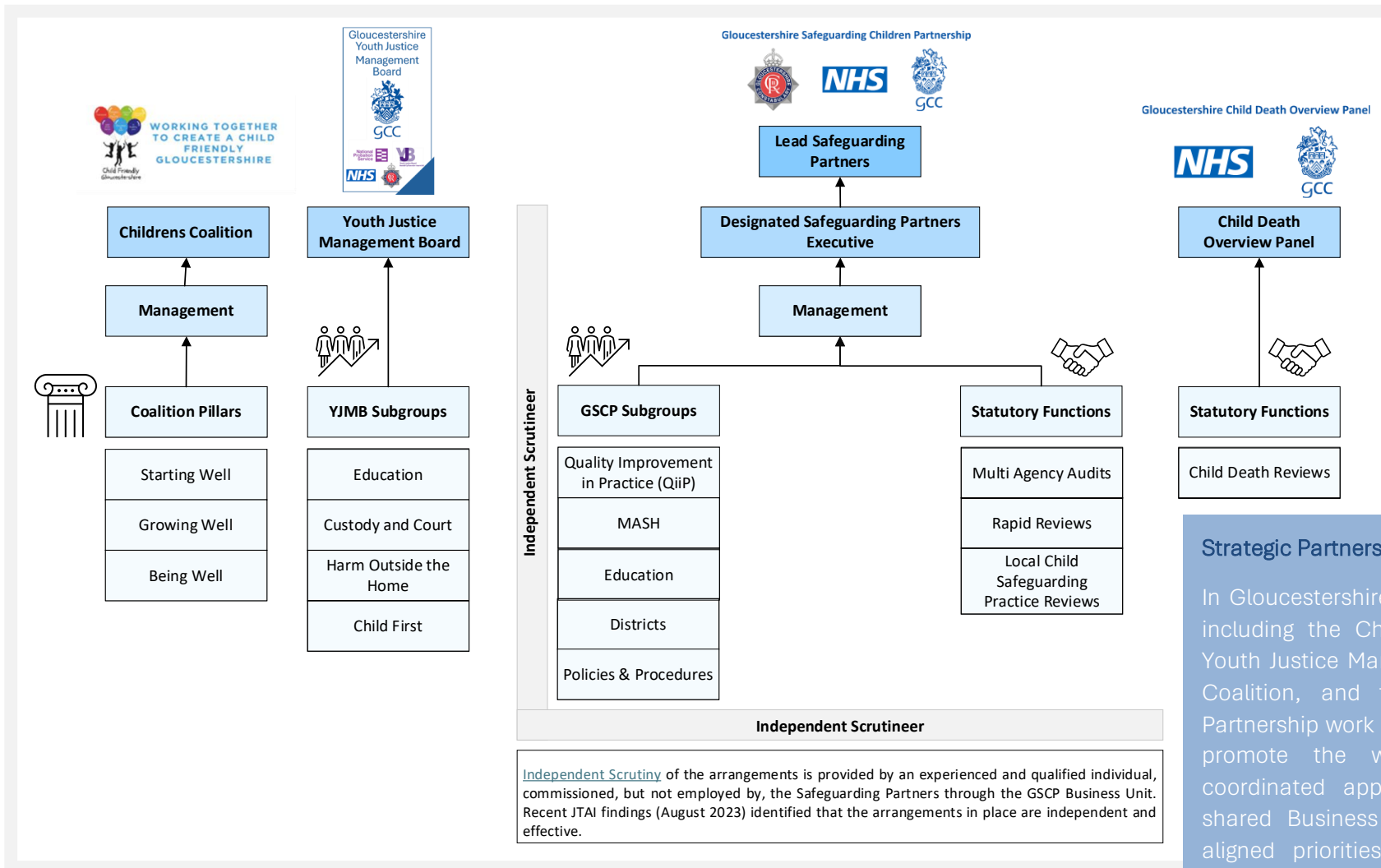
Chair of the GSCP Executive Jan 2025 to Date





## Partnership Structure

The partnership maintained its 6 subgroups and its relationship with the Gloucestershire Child Death Review Process. It further expanded to provide administrative support for the Youth Justice Management Board and the Children's Coalition. Maintaining oversight of Child Death Review Process ensuring links between serious safeguarding review processes and ensuring effective and responsive review arrangement.



### Strategic Partnership Collaboration:

In Gloucestershire, key strategic partnerships including the Child Death Overview Panel, Youth Justice Management Board, Children's Coalition, and the Safeguarding Children Partnership work collectively to safeguard and promote the welfare of children. This coordinated approach is supported by a shared Business Unit Secretariat, ensuring aligned priorities, efficient communication, and timely responses when needed.





Gloucestershire is a two-tier county for local government comprising of a county council and six districts with contrasting characteristics in terms of affluence, deprivation, and concentration of population. We are a geographically large and diverse county with differing needs.



People living in  
Gloucestershire  
(latest figures  
from 2023)



Children living in  
Gloucestershire  
(latest figures  
from 2023)



Children  
reported missing



Ethnicity of Gloucestershire:  
**93%: White**  
**3%: Asian**  
**2%: Multiple Ethnic Groups**  
**1%: Other Ethnicity**  
 (latest figures from 2023)



MARFs recieved



Children with an  
EHCP  
(aged 0-25 figures as of  
end of March 2025)



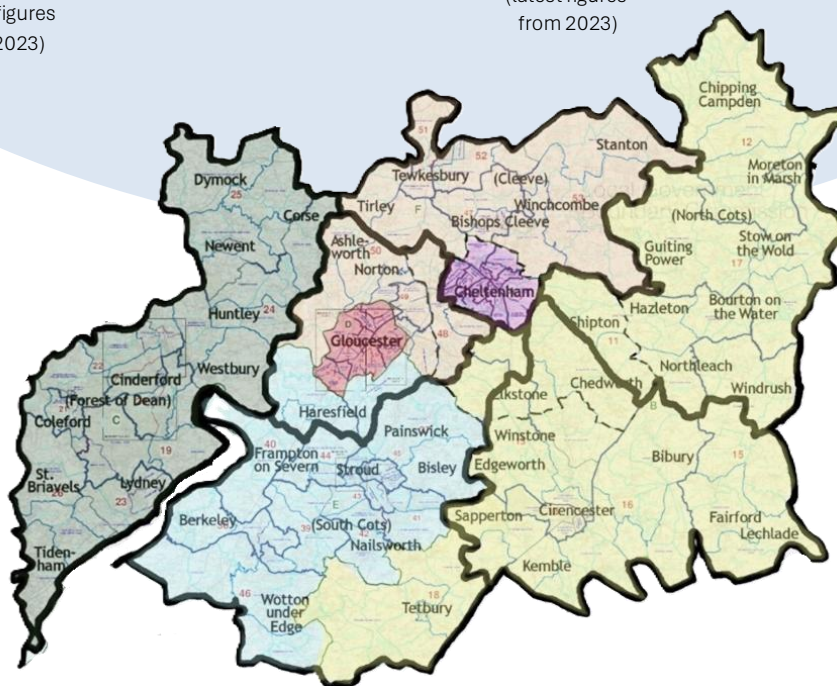
## Referrals to Childrens Social Care



1,675  
Children on a Child  
Protection Plan



## Children on a Child in Need Plan



Children Electively  
Home Educated  
(Snapshot From  
March 2025)



**4,947**  
Children victims  
of crime



244: Primary  
41: Secondary  
12: Special  
3: Alternative Provision



Contacts to the  
Multi-Agency  
Safeguarding Hub

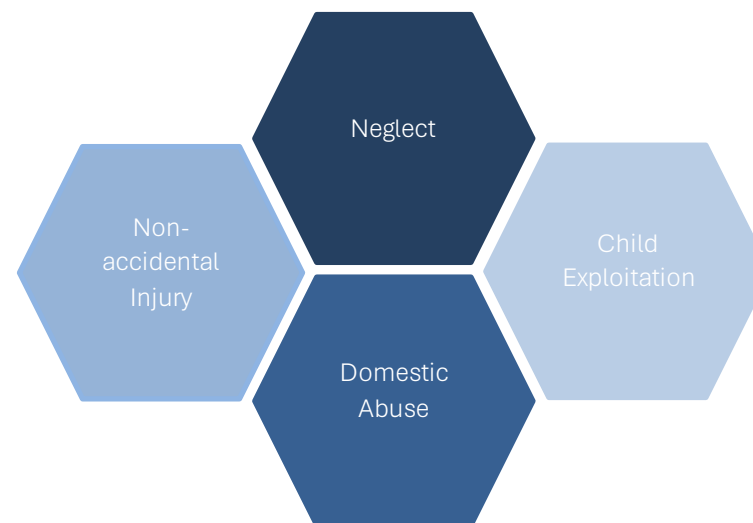
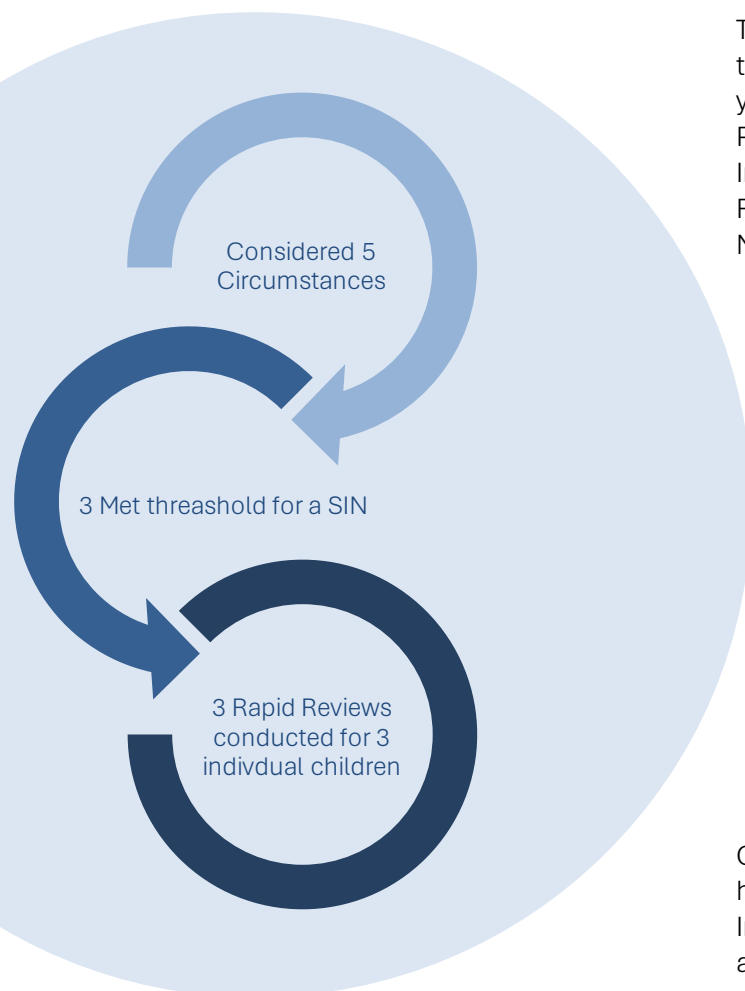


## Rapid Reviews

The GSCP operates a Multi-Agency Serious Incident Notification (SIN) process in keeping with the Working Together 2023 requirements. The GSCP monitors through local and national data sets, seeking assurances that the partnership is effective in identifying and responding to incidents. Close links between the GSCP and the Child Death Overview Panel (CDOP) also assures the partnership in this area.

### Overview of Rapid Reviews Conducted within Gloucestershire

The partnership has not witnessed a drop in the number of SINs submitted from 2023/2024 to 2024/2025 unlike national data <sup>1</sup>which shows a decrease has been witnessed year on year since a spike in 2021. During the period April 1<sup>st</sup> 2024 to March 31<sup>st</sup>, 2025, the Partnership considered five Serious Incident Notifications undertaking three Rapid Reviews. In 2023/2024 three rapid reviews were also undertaken by Gloucestershire. Out of the three Rapid Reviews conducted four presenting concerns were identified as shown in below. Neglect and Domestic Abuse were present in two of the Rapid Reviews.



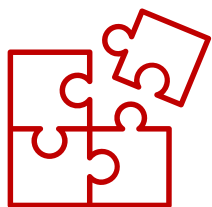
One Rapid Review was conducted jointly with the Youth Justice Management Board who had also agreed that the circumstances had hit a threshold for a youth Justice Serious Incident Notification. The review met successfully met the needs for both the Youth Justice and Safeguarding SIN processes and will be replicated in the future if appropriate.



### Assurances

The partnership on average took 20 days to submit Rapid Review reports to the National Panel against a recommended 15 working day submission timeline. This is an increase from 2023/2024 whereby it took 16.5 days on average. The increase is largely due to a single review taking a total of 16 days between submission of the SIN and the submission of the completed Rapid Review report. This review was a joint Youth Justice and safeguarding review that increased the complexity of logistics, including authoring and the approval of the report.

All Partners and relevant agencies have shown a significant commitment to ensure safeguarding reviews are completed within expected timescales and that the need to identify the learning is pre-eminent in all thinking.



### Learning

Eight recommendations were suggested by the independent authors. As expected, some of these focused on the need to update and promote local policies and procedures to strength partnership working. This was particularly evident for the Partnership Escalation protocol was referenced in two of the rapid reviews.

One recommendation referenced and endorsed the work already underway within the GSCP; Harm outside the Home (HOTH) Review. The puzzle pieces below provide a summary of the key themes for the recommendations identified.







## Local Child Safeguarding Practice Reviews

Gloucestershire did not commission any Local Child Safeguarding Practice Reviews within 2024/2025. This has allowed the Partnership to prioritise addressing recommendations from Rapid Reviews and historic LCSPRs.

### Child Ella LCSPRs

Gloucestershire partnered with the Royal Borough of Windsor and Maidenhead (RBWM) Safeguarding Partnership regarding a death of a child who temporarily resided Gloucestershire but passed away in the Royal Borough of Windsor and Maidenhead.

Although the (RBWM) Safeguarding Partnership are leading on the LCSPR, Gloucestershire hosted a practitioner reflection day for professionals who worked with the child in Gloucestershire, to reflect and feedback on the circumstances. This was widely taken up and appreciated by all who attended. This event allowed Gloucestershire Agencies to fully understand the circumstances relating to the child specifically in relation to Gloucestershire's service provision.

The recommendations and actions within the LCSPR are as a direct result of this event.

### Completion of Historic LCSPRs



The GSCP published the LCSPR for [Child X](#) in March 2024 which reviewed the circumstances surrounding a child in care who was sexually abused whilst accommodated in a complex needs bespoke placement within the County.

The LSCPR for [Child ASH](#) was published in 2024 and the recommendations and learning from which were referenced within the National Panels Practice Briefing 3, Elective Home Education.

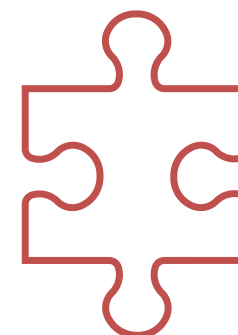
Actions for both Child X and Child ASH were completed during this reporting period.

### National Panel Report on Child Sexual Abuse (2025)

The 2025 national review highlights ongoing systemic challenges in identifying and responding to child sexual abuse within families. It reveals that children's voices were often overlooked and that professional uncertainty contributed to inconsistent multi-agency responses.

Aligned with the GSCP's strategic priority on tackling child sexual abuse and supported by its partnership with the CSA Centre of Expertise this report, alongside findings from local Rapid Reviews and LCSPRs, underpins and informs the partnership's ongoing work in this critical area

[National review into child sexual abuse within the family environment](#)





## Multi Agency Audit

In 2024/2025, the GSCP instigated four audits overseen by the Quality and Improvement in Practice Subgroup, these audits supported learning, accountability, and continuous improvement. The partnership prioritised completing existing audit action plans before commissioning new audits.

### April 2024 NSPCC Snapshot CSA MATA

NSPCC Snapshot audit, System-wide Child Sexual Abuse (CSA) Snapshot, serves as a structured, reflective tool designed to help local safeguarding partnerships and multi-agency teams evaluate and improve their response to child sexual abuse.

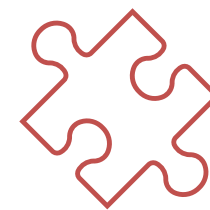
**Impact:** The NSPCC Snapshot audit has strengthened local safeguarding by identifying service gaps, enhancing multi-agency collaboration, and informing strategic improvements - ultimately leading to better protection and outcomes for children affected by sexual abuse.

The audits strengthened the GSCP's strategic decision-making and commitment to continuous improvement. In 2024–2025, efforts focused on completing the previous year's audit schedule, improving outcomes but limiting capacity to launch new audits.

### May 2024 Operation Encompass MATA

This audit gave the Executive essential oversight and set out clear recommendations. It addressed concerns about the lack of visibility on OpE effectiveness, with an action plan progressed through the MASH Subgroup.

**Impact:** The audit strengthened the Executive's oversight of Operation Encompass by identifying and addressing delays and inconsistencies in notifications to schools and nurseries. It brought agencies together to reflect on current practices, improving accountability and coordination. The process led to more timely information-sharing and a more effective safeguarding response for children affected by domestic abuse, enhancing both strategic assurance and multi-agency communication.



### Sept 2024 Child P MACA

The QiiP Subgroup approved a MACA on Child P to explore the effectiveness of local missing protocols through the lens of lived experience. The audit identified key learning to strengthen multi-agency responses to missing children.

**Impact:** The audit provided valuable insight into the application of local missing protocols through Child P's lived experience. It identified gaps in multi-agency coordination and informed targeted improvements. As a result, the partnership reviewed and strengthened its missing protocol and enhanced collaborative working to better safeguard missing children.

## Strategic Impact Summary

Through eight targeted audits undertaken in 2023 – 2024 the GSCP strengthened its strategic oversight, improved safeguarding practice, and deepened system-wide learning. Thematic reviews, particularly around child sexual abuse (CSA), domestic abuse, and front door activity, identified recurring issues, informed local priorities, and aligned practice with national findings.

Audits led to demonstrable improvements in timeliness, threshold application, and inter-agency coordination. Independent scrutiny of commissioning and allegations management enhanced accountability, while national tools like the NSPCC Snapshot and Operation Encompass review supported benchmarking and future planning.

### Sexual Violence Needs Assessment

The OPCC's assessment, supporting ISVA service recommissioning, identified children and young people as a key affected group—highlighting the need for services that better reflect local risks and needs.

**Impact:** The assessment provided a clearer understanding of the scale and nature of sexual violence affecting children and young people in Gloucestershire. It informed the recommissioning of the ISVA service, ensuring future provision was better aligned with local needs and risks. The findings also strengthened the partnership's strategic focus on early intervention and tailored support for younger victim-survivors.



## Statutory Functions

The Gloucestershire Safeguarding Children Partnership (GSCP) continues to provide strong oversight and assurance across key safeguarding responsibilities, in line with statutory guidance and local priorities.

### Operation Encompass (OpE):

A national initiative that ensures schools are promptly informed when a child has been exposed to domestic abuse, enabling timely and appropriate support. During this reporting period, over 2,000 domestic abuse incidents were shared with schools and educational settings across the county. The Partnership undertook an audit of its Operation Encompass arrangements to assess the timeliness of notifications and identify opportunities to strengthen communication with settings, ensuring children receive the support they need without delay.



### Section 11 (S11) Audit:

In 2024, the GSCP continued to deliver its Section 11 safeguarding arrangements, with leadership from the Independent Scrutineer. Once again, the audit was enriched by the active involvement of young people from the Stroud District Youth Council and the Gloucestershire Ambassadors, ensuring that children's voices remain central to our safeguarding approach.

### Child Death Overview Panel (CDOP):

Gloucestershire's CDOP remains a well-established and effective mechanism for multi-agency review of child deaths. The CDOP has published its 2024/25 Annual Report, and the GSCP is assured those statutory responsibilities under *Working Together to Safeguard Children* and the *Child Death Review: Statutory and Operational Guidance (England)*<sup>1</sup> are being met.



## Safeguarding Assurance

### Allegations Management:

The GSCP is assured that robust policies and procedures are in place for managing allegations against individuals working with children. The Allegations Management arrangements<sup>1</sup> clearly differentiate between an allegation, a concern about the quality of care or practice, and a complaint. The service has produced an Annual Report, which has been received by the Partnership.

### Private Fostering:

The GSCP has reviewed Gloucestershire's Private Fostering arrangements and is assured of their effectiveness, in line with the requirements set out in Section 7 (7.10) of the National Minimum Standards for Private Fostering<sup>1</sup>.



## Safeguarding in Education

The GSCP is committed to embedding education as a key safeguarding partner, with dedicated Executive representation and a focused education subgroup ensuring the sector's voice is central to strategic safeguarding discussions.



The Gloucestershire Education Directorate continues to prioritise the safeguarding of children and young people across all educational settings. A Education Safeguarding Lead was appointed in 2023/2024 to strengthen support and coordination.

In 2024/2025, their role has expanded significantly. They act as the single point of contact for safeguarding advice, are a statutory member of the Strategic Incident Notification (SIN) panels and Chair the Education Subgroup within the Gloucestershire Safeguarding Children Partnership.

This investment reflects the Directorate's commitment to ensuring safe and supportive learning environments countywide.

### Education Subgroup:

The Education Subgroup plays a pivotal role in safeguarding governance across Gloucestershire's education system. It focuses on identifying systemic risks, ensuring statutory compliance, and addressing structural inequalities affecting children and young people.

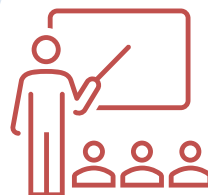
- Targeted action on disproportionality and inclusion is driving meaningful change.
- Compliance testing and structured follow-up are strengthening safeguarding standards.
- The subgroup is proactively addressing emerging risks and aligning with national and local priorities.
- Education is now more firmly embedded within the GSCP's broader safeguarding strategy.

### Keeping Children Safe in Education (KCSiE) – Safeguarding Declaration Audit:

The GSCP Safeguarding in Education Assurance Declaration Process, aligned with the statutory requirements of Keeping Children Safe in Education, was reviewed during this reporting period. The audit provided the Partnership with a comprehensive overview of educational settings' self-assessed safeguarding competence. To date, 93% of all settings have engaged with the process, reflecting strong commitment to safeguarding standards and continuous improvement.

### Early Years Foundation Stage (EYFS) Section 3 - Safeguarding Declaration Audit:

This year, the GSCP launched its EYFS Section 3 Safeguarding Declaration Process which is an online self-assessment tool co-produced with the Early Years Forum and GCC's Early Years team. It is designed to assess safeguarding compliance across early years and childminder settings, the tool has seen a fair uptake with 31% of settings engaged to date. Focus over the coming year will be to improve the understanding of the assessment tool and increase the uptake.



### Gloucestershire Safeguarding in Education Partnership (GSEP):

Delivered through the GSCP Business Unit, the GSEP service works for and supports over 91% of all education settings in the county. It works in close collaboration with the Education Directorate and wider safeguarding partners to provide specialist safeguarding support, including tailored training and Section 175/157 audit facilitation. In the year ending March 2025, the service delivered 92 training sessions to schools reaching over 3000 school staff.





## Multi-Agency Safeguarding Practice Development

The importance of multi-agency training remains a key priority for the Gloucestershire Safeguarding Children Partnership (GSCP). It serves not only as a vital mechanism for disseminating learning from both local and national safeguarding reviews, but also as a platform to strengthen collaborative working across agencies. This aligns with the clear expectations set out in Working Together to Safeguard Children 2023.

Details of the GSCP Safeguarding Children Curriculum and how you can access it are available on the GSCP website.

“Good course, graphics make it more interesting, and the additional reading is helpful”

“Very informative with clear and concise information”

“A clear and comprehensive overview with engaging examples”



During the reporting period, the GSCP has continued to develop and enhance its training offer. Building on the successful launch of its online learning platform in March 2024, the Partnership has expanded its curriculum and invested in specialist capacity by appointing a dedicated Multi-Agency Safeguarding Trainer to the Business Unit. This role has been instrumental in supporting the delivery of high-quality, evidence-informed training that reflects emerging themes and learning across the safeguarding system

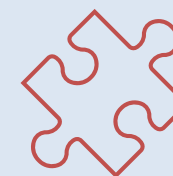


## National Legislation & Inspection Activity 2024/2025

The legislative changes introduced during 2024–2025 have significantly strengthened the national safeguarding framework, with direct implications for local partnerships. Key reforms such as mandatory school registration, improved tracking of vulnerable children, and clarified information-sharing protocols have enhanced visibility, accountability, and practitioner confidence.

### Drivers for Change within Gloucestershire

For safeguarding partnerships, these changes support earlier intervention, better multi-agency coordination, and more robust oversight of children in care and those educated at home. Gloucestershire's partnership has already begun embedding these reforms into strategic planning and operational practice, ensuring alignment with national expectations and improved outcomes for children.



National Panel Briefing: Race, Racism and Safeguarding Children

National Panel's Annual Report & Analysis

Children's wellbeing and Schools Bill

National Review: Child Sexual Abuse Within the Family Environment

Information Sharing Advice for Practitioners

Constabulary HMIC FRS Child Protection Inspection

National Panel Briefing: Safeguarding Children in Elective Home Education

Children's Social Care SEND Inspection

EYFS Update: Two separate frameworks were introduced: For Childminders & for Group and School-Based Providers

Crime and Policing Bill (2025) – Mandatory Reporting of Child Sexual Abuse

Department for Education – Keeping Children in Education



## Response to Safeguarding Reviews

In 2024–2025, the Partnership delivered a focused programme of improvements to strengthen safeguarding, enhance early help, and improve multi-agency collaboration. The summary below highlights key developments driving more consistent, child-centered practice across Gloucestershire.

The Partnership implemented systemic improvements to strengthen safeguarding practice. Key developments included the revision of the Early Help Pathway and the launch of the Proportionate Intervention Programme, ensuring timely, proportionate support for children and families. The re-launch of threshold guidance and introduction of multi-agency reflective practice forums have reinforced consistent decision-making and professional curiosity.

Inclusive practice has been included throughout training, while workforce stability has been supported through reduced agency reliance and development opportunities. The implementation of the Family Hub model and Missing Operational meetings has further strengthened local coordination and multi-Agency responses.

Process reviews and IT enhancements have streamlined workflows and improved data accessibility.

### Early Identification & Response

**Multi-agency chronologies** Promote the use of chronologies to track cumulative harm. Imbed trauma-informed principles into assessment frameworks and early help pathways to better recognise and respond to the impact of adversity on children and families.

### Professional Curiosity, Unconscious Bias & Risk Analysis

Strengthen safeguarding practice through targeted training on second-level questioning and disguised compliance, reinforced by inclusive assessment protocols that ensure paternal engagement, regular reflective supervision, and awareness-raising on unconscious bias to challenge assumptions and improve decision-making in complex cases.

### Workforce Capacity & Supervision

Stabilise staffing in key services such as midwifery and social care by offering retention incentives, protected development time, and wellbeing support, while ensuring newly qualified staff receive protected time for high-quality supervision to foster reflective and relational practice.

### Multi Agency Coordination

Relaunch and clarify escalation procedures to ensure all professionals understand thresholds and how to act when concerns persist, while establishing regular multi-agency reflective forums to support shared understanding and planning in complex or high-risk cases.



## Partnership Activity

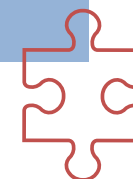
Partnership advanced strategic improvements designed to strengthen safeguarding practice, improve early intervention, and enhance multi-agency coordination. Key developments included the launch of joint protocols for safeguarding in commissioning, revised threshold guidance, and updated procedures such as the Child Protection Medical Assessment Protocol. These changes have supported more consistent decision-making and clearer professional responsibilities.

### Policy & Protocol Development

- Launch of a joint adult and children's Gloucestershire Protocol on Safeguarding Duties for Commissioning. Along with the design of Bespoke training for Commissioners on Section 11 duties.
- Revision of the Partnership Child Protection Medical Assessment Protocol and an Independent Review into the current practices within Gloucestershire.
- Launch of the Early Years Foundation Stage Section 3 safeguarding Assurance Declaration. First report assessing the data and utilisation of the Assurance Declaration.
- Improved S11 process with the implementation of a Focus Day to enable good practice and learning to be shared between agencies.
- Levels of Intervention and Threshold Document under a joint Childrens Coalition / GSCP review.
- Working with the CSA Centre for Expertise to identify and consider a CSA Pathway proposal for adoption in 2025
- Completion of a wholesale review of the Children Missing Home, Care or School protocol

### Data & Oversight

- A Master Action Log has been developed to capture and monitor all partnership activity across reviews, subgroups, and working groups. It provides detailed data on the volume and origin of actions, thematic alignment, and completion rates. This is routinely presented to the GSCP Executive, offering a clear overview of partnership efficiency and progress against strategic priorities.
- Development of the Partnership Analysis Report process for reporting on multi-agency safeguarding arrangements including national drivers.
- Creation of a quarterly Missing Operational Report which collates Partnership data for multi-agency review.
- Creation of the Multi-Agency Operational Report which collates MASH data and narrative from Operational Colleagues. It provides colleagues with the ability to showcase improvements and request support from Subgroup members as required.
- Statutory Process review undertaken by the Independent Scrutineer testing efficacy of arrangements.
- Operation Encompass data reporting routinely captured, analyzed and reported on exception

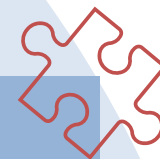


## Workforce & Learning

- An Emergency Preparedness conference for schools was hosted by the constabulary strengthening settings links and response arrangements for lock down situations.
- Development and improvement of the Multi-Agency Curriculum and Learner Management Platform, specifically strengthening the CSA offer.
- Recruitment of GSCP Trainer to strengthen the incorporation of local learning into multi-agency training.
- In response to identified gaps, dedicated multi-agency Workforce Development and Child Sexual Abuse (CSA) Working Groups have been established to provide focused oversight and drive progress in these priority areas. Each group has developed and is actively delivering against a structured action plan.
- The Business Unit has introduced a bespoke E-shot tool to support learning dissemination across the partnership in 2025/2026. Engagement with the content will be monitored and reported back to the GSCP to inform future learning strategies.
- Two Harmful Sexual Behaviour webinars, delivered by the Lucy Faithfull Foundation, were held for education settings during the period, with a third scheduled for June 2025. These sessions form part of the GSCP's commitment to strengthening the HSB response in schools through targeted learning and awareness.

## Community Engagement & Campaigns

- Ongoing partnership engagement with the implementation of the constabularies Right Care Right Person initiative.
- Multi-Agency Serious Incident Notification (SIN) Decision Making arrangements reviewed and maintained.
- Tackling Online Harm Campaign developed and led by the Constabulary and the Internet Watch Foundation (early 2025)
- Development of the Partnership Analysis Report which pulls data and narrative from the GSCP Subgroups, Independent Scrutiny and the statutory functions of the Business Unit into a central document for Executive oversight and review.
- Harm Outside of the Home independent review was endorsed, funded and implemented across the partnership to report back in 2025/2026
- The GSCP Business Unit adopted the administration support for the Children's Coalition and Youth Justice Management Board. To provide closer alignment and oversight of overlapping workstreams between these partnerships.
- Gloucestershire Safeguarding in Education continue to provide interactive plays regarding exploitation and internet safety directly to students. In 2024/2025 128 performances were provided in Education Setting across Gloucestershire.



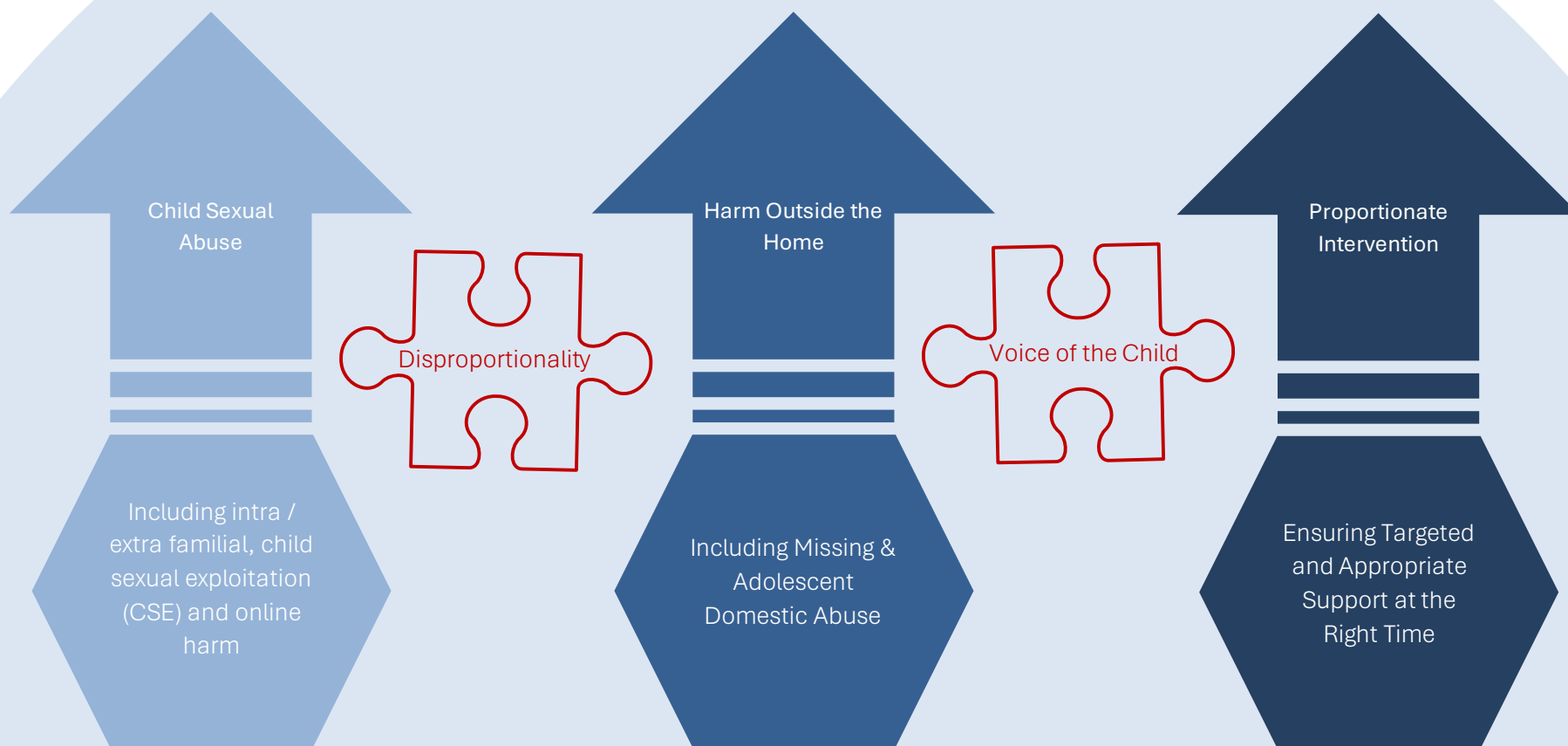
The introduction of enhanced data tools including the Partnership Analysis Report, operational reporting, and the Master Action Log has improved oversight and accountability across the safeguarding system. Workforce development was prioritised through the enhancement of a multi-agency curriculum, targeted training, and thematic working groups. Community engagement was strengthened through campaigns such as Harms Outside the Home and interactive school-based initiatives. Collectively, these actions reflect a strategic and responsive safeguarding partnership, with children and families placed firmly at the centre of practice.





## 2025 - 2028 Priorities

The GSCP Executive held a development day in 2022, during which it established its strategic priorities for the following three years up to April 2025. The partnerships priorities continue to be shaped by a range of local and national influences, including strategic assessments, GSCP data and quality assurance activity, and learning from both the National Child Safeguarding Practice Review Panel and local rapid reviews and child safeguarding practice reviews.



For 2025–2026, the GSCP remains committed to aligning its work with the revised Working Together to Safeguard Children 2023 guidance. These priorities are underpinned by a commitment to continuous improvement, partnership working, and ensuring that safeguarding arrangements reflect both local needs and national expectations. Voice of the child and disproportionality will be a golden thread across all Partnership priorities.



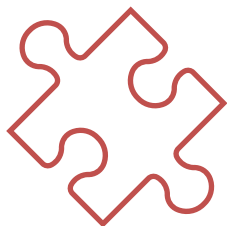
# Funding

“The LSP should agree on the level of funding needed to deliver the multi-agency safeguarding arrangements. This includes consideration of business and analytical support, independent scrutiny, infrastructure, and core functions including local children safeguarding practice reviews, multi-agency training and learning events. It is the responsibility of the LSP to ensure that adequate funding is allocated and spent in line with agreed priorities. The funding should be transparent to children and families in the area, and the individual contributions of safeguarding partners and relevant agencies should be clearly set out in reporting.” Working Together 2023.

GSCP Income 2024/2025	
Carry forward into 2025-2026	£69,809.00
Gloucestershire Integrated Care Board	£134,630.00
Gloucestershire Constabulary	£60,616.00
Gloucestershire County Council	£193,467.00
Education Training Income	£37,000.00
Relevant Agency Training Income	£66,140.00
<b>Total</b>	<b>£561,662.00</b>

GSCP Expenditure 2024/2025	
Statutory Functions (LCSPR & Audits including Tackling Online Harm Campaign)	-£33,350.00
Independent Scrutiny	-£19,500.00
Staffing and Business Support costs	-£344,265.00
Learner Management System & Development	-£35,210.00
Muti Agency Training Delivery & Shared Learning	-£33,547.00
Child Death Review Systems	-£20,308.00
Tri-X Procedure Manual	-£5,514.19
<b>Total</b>	<b>-£491,694.19</b>
Carry forward into 2025/2026	£69,967.81

The GSCP are assured that the funding allocated is sufficient and proportionate, allowing the partnership to fulfil its statutory functions.



If you have any questions about this report, please contact [GSCP Business Unit](#),

**Gloucestershire Safeguarding Children Partnership**

