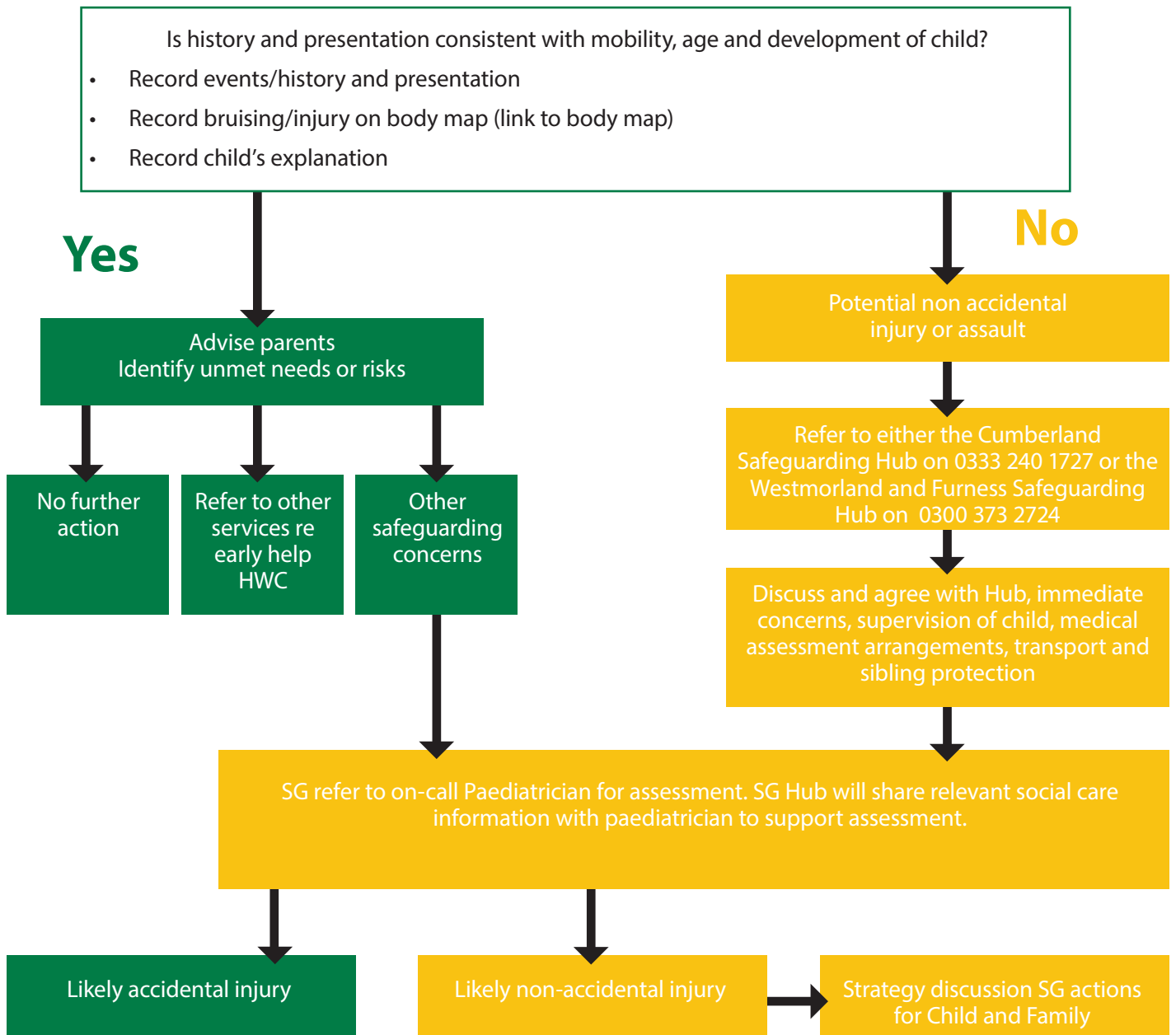




## Brusing or Injury to a Fully Mobile Child

If a child requires urgent medical attention ring 999



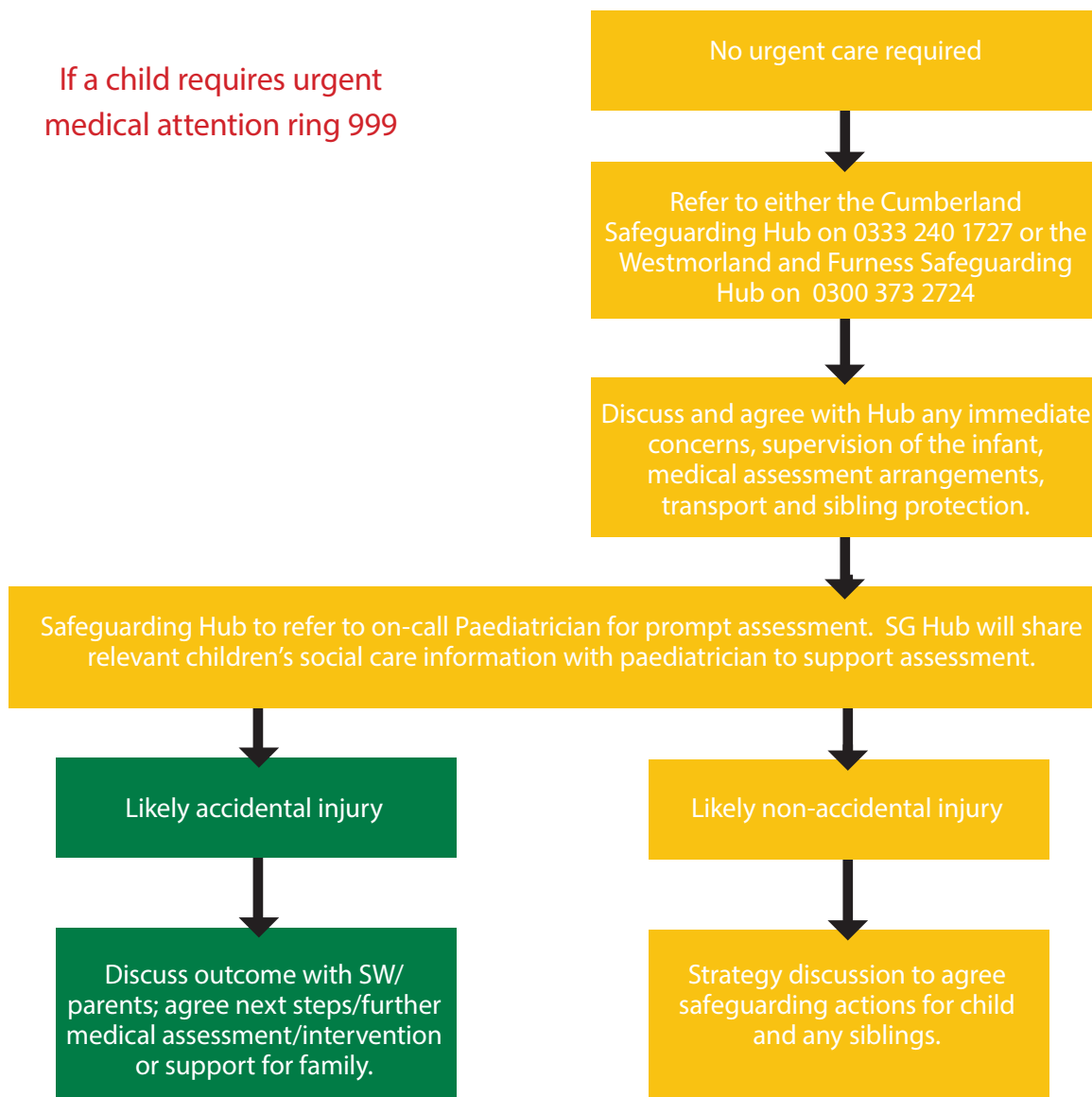
If parents/carers do not present for paediatric assessment within expected timeframe alert CSC Social Worker/SG Hub and consider Police contact (999) for welfare check and follow up.



## Brusing or Injury to a Non-Mobile Child

Non mobile infants rarely bruise/are most vulnerable

If a child requires urgent  
medical attention ring 999



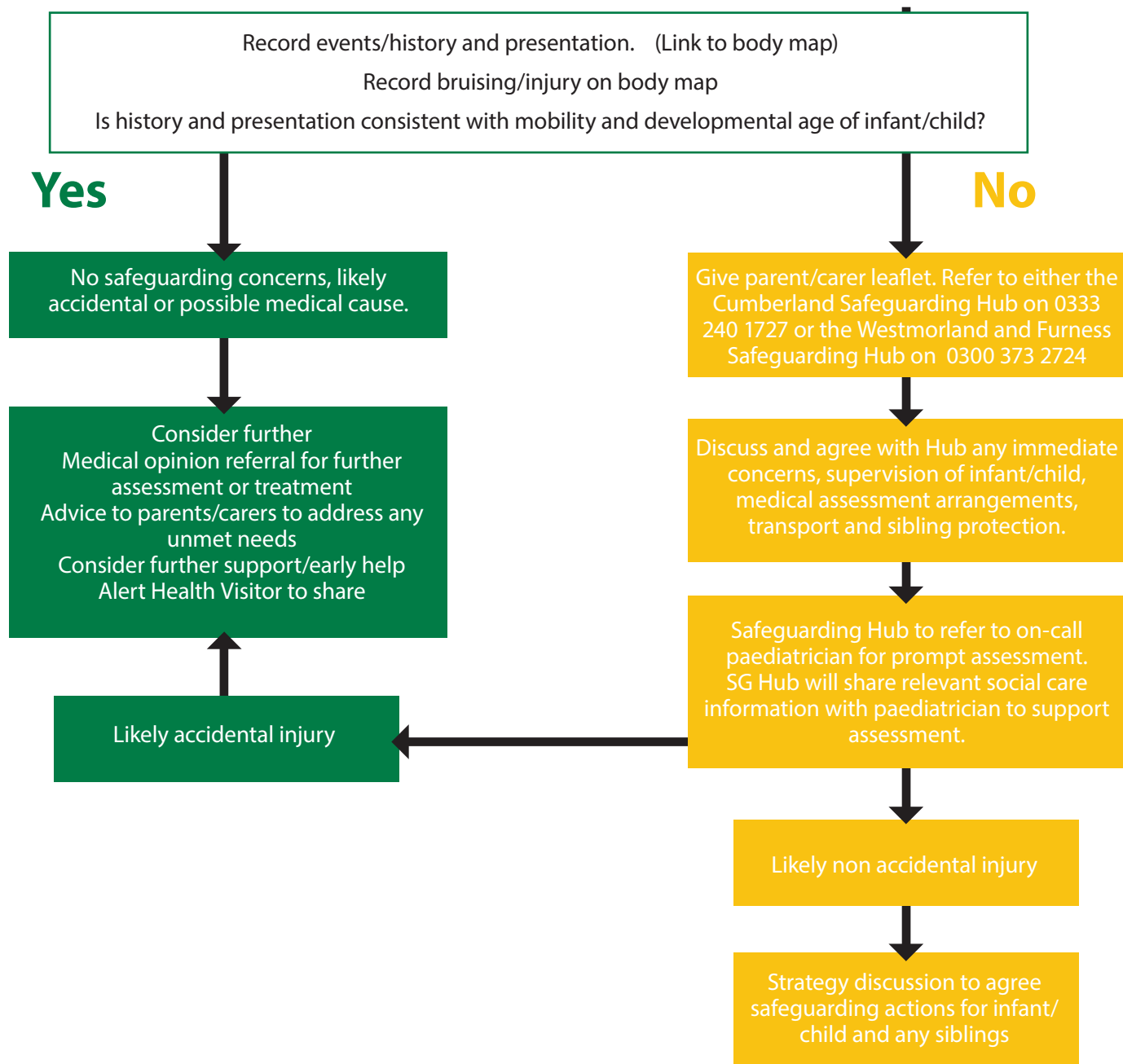
If parents/carers do not present for paediatric assessment within expected timeframe alert CSC Social Worker/SG Hub and consider Police contact (999) for welfare check and follow up.



## Bruising or Injury to Infants becoming Mobile

Bruising or injury on a child who is becoming mobile,  
e.g. crawling, rolling, pulling to stand or 'furniture' walking.

If a child requires urgent medical attention ring 999



If parents/carers do not present for paediatric assessment within expected timeframe alert CSC Social Worker/SG Hub and consider Police contact (999) for welfare check and follow up.