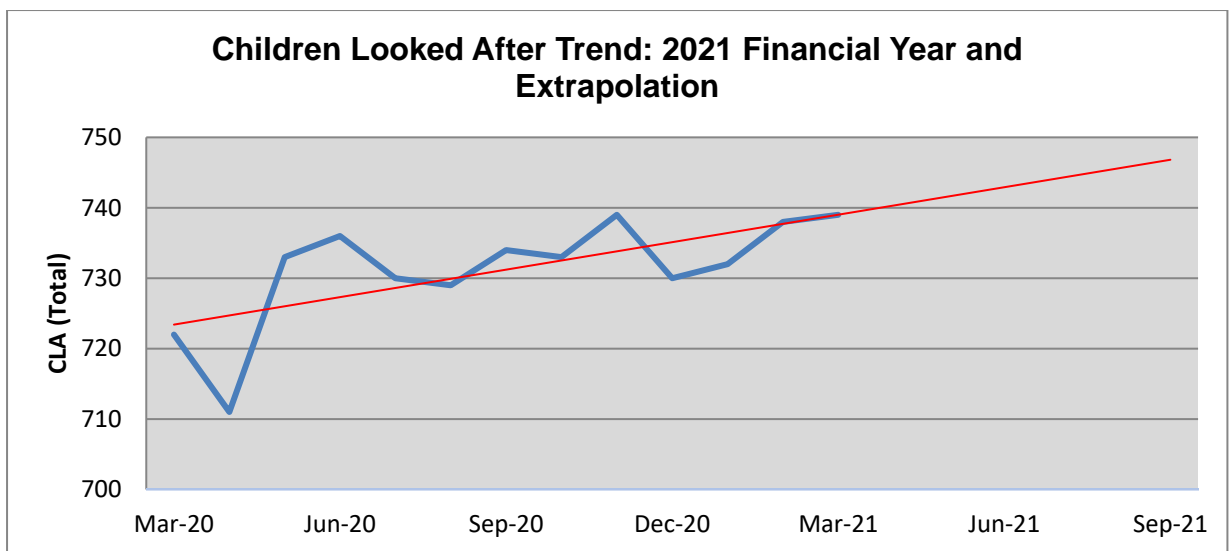
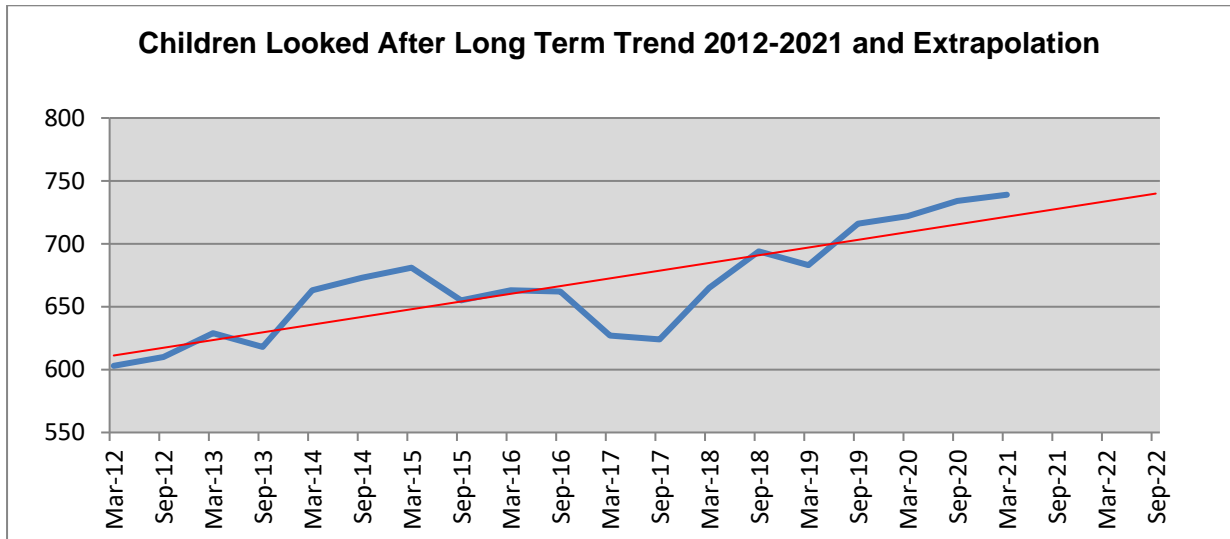


Children Looked After Placements Sufficiency Strategy 2022-2025

Appendix 1 – Sufficiency Analysis 2021

1. Children Looked After: Demand

1.1 Number of Children Looked After



There continues to be an overall increase in the number of children in care in Cumbria. The trendline suggests this will continue to rise. At 739 there were 17 more children looked after at the end of March 2021 compared to the previous year.

1.2 Profile of Children Looked After

Gender

On 31 March 2021, 59% (433) of children looked after were male and 41% (306) female.

Age

Cumbria 31/3/21	Under 1	1 to 4	5 to 9	10 to 15	16 and over	Total
No.	35	126	127	312	139	739
%	5	17	17	42	19	
Statistical Neighbours 2020 %	6	14	18	39	22	
National Average 2020 %	5	14	19	39	24	

There has been a shift in the age profile of children looked after in Cumbria, with proportions of children aged 10 -15 continuing to reduce whilst there has been an increase in 1 to 4 year olds.

Ethnicity

There continues to be a significantly higher proportion of children looked after of White British ethnic origin compared to statistical neighbours and nationally. However, over the last few years there has been a significant change in number and proportion of children in care from different ethnicity groups, which is likely to continue to rise.

	2016		2017		2018		2019		2020		2021	
White	642	97%	608	97%	637	96%	644	94.3%	688	95.4%	697	94.3%
Mixed	18	3%	15	2%	15	2%	24	3.5%	20	2.8%	23	3.1%
Asian or Asian British	0	0%	0	0%	4	0%	4	0.6%	4	0.6%	7	0.9%
Black or Black British	1	0%	3	1%	6	1%	10	1.5%	8	1.1%	9	1.2%
Other ethnic groups	0	0%	1	0%	3	0%	1	0.1%	1	0.1%	3	0.4%
Total	661	-	627	-	665	-	683	-	721	-	739	-

Legal Status

Cumbria 31/3/21	Interim care order	Full care order	Placement order	Accommodation under s20	Emergency/Police protection order	On remand, detained	Total
No.	168	455	51	63	1	1	739
%	23%	62%	7%	9%	0%	0%	

1.3 Turnover of Children Entering and Leaving Care

Cumbria 2020 - 2021	Children Entering Care		Children Leaving Care	
	No.	Rate	No.	Rate
	212*	22.9	193*	20.9

**Only the first or last occasion on which a child started or ceased to be looked after in the year has been counted.*

Placement Stability

Over the last financial year 44 children moved placements 3 or more times, equating to 6% of placements. This is less than 57 (8%) during 2020.

1.4 Destination of Children Leaving Care

The table below shows the destinations of the 193* exits from care over the 2020-2021 financial year. The highest number of children left care to return home, on an SGO or through adoption.

Returned home	Adopted	Special guardianship order	Residence / Child arrangement order	Independent living	Transferred to Adults residential care	Sentenced to Custody	Died	Other	Total
45	25	38	5	12	9	1	1	57	193*

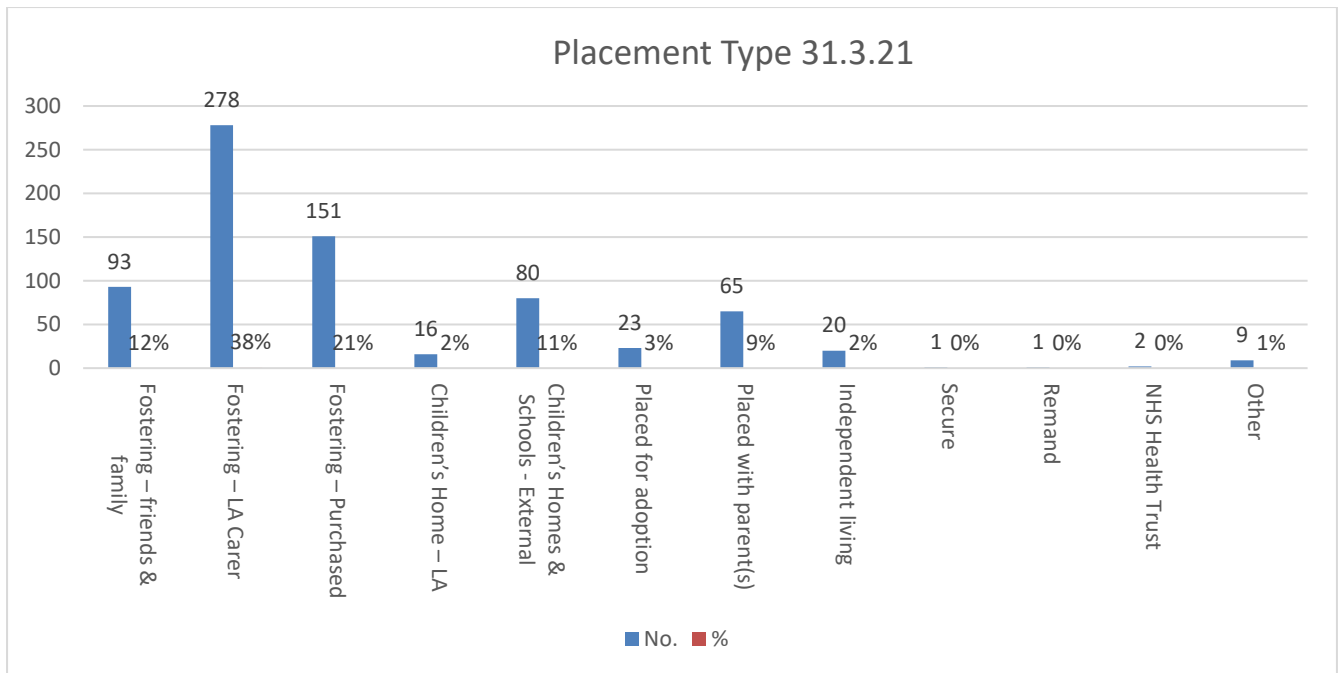
**Includes all exits, i.e. some children may have exited care more than once*

1.5 Care Planning, Reviews and Permanence Planning

The proportion of children with a timely review was 94% and participation of children looked after in their review 90%. Cumbria continues to focus on the tight management of care plans to ensure that drift is minimised. Alongside effective care planning, permanence planning has also been tightened up on to ensure timely progress through to permanence for children and young people.

1.6 Children Looked After: Placement Type

The following graph shows the placement type for the 739 children who were looked after on 31 March 2021.



**Note: There is a slight difference to some of the data reported in the Sufficiency Strategy due to differences between categories used in the 903 publication and internal categories.*

Foster Care

There was a similar number in foster care 522 (71%) compared to 527 (73%) last year. Statistical neighbour and national averages were 73% in 2020. The number of local authority foster placements (not including family and friends) has increased in recent years whilst the number of Independent Fostering Agency (IFA) placements has decreased.

Residential Homes and Schools

The number of children placed in residential children's homes and schools at the end of the last financial year has remained static with 96 in 2021 and 98 in March 2020. This sector has seen a large proportional increase in recent years but has decreased slightly over the last two.

Parent and Child Placements

9 parent and child foster care placements were made during the 20-21 financial year of which 5 were with IFAs and 4 were internal. There were also 3 residential parent and child placements made.

1.7 Complex Needs / Disability Placements

On 31 March 2021 there were 200 children looked after (21%) with an Education Health Care Plan (EHCP).

Children Looked After by Disability Type:

	31/3/2019	31/03/20	31/03/21
Behaviour	14	16	14
Communication	7	5	5
Consciousness	2	4	4

	31/3/2019	31/03/20	31/03/21
Diagnosed with autism or Asperger's syndrome	18	26	20
Disabled under DDA but not in other categories	7	11	10
Hand function	2	2	2
Hearing	5	5	4
Incontinence	3	3	3
Learning	36	39	33
Mobility	4	5	4
Personal care	4	4	4
Vision	5	5	4
Total	107	125	107

Figures are for disability categories and children may be included in more than one category

On 31 March 2021 there were 67 children looked after with one or more disabilities recorded. The highest number of children in care with a disability had a learning disability (33). 25 children in care with a disability were placed outside Cumbria.

1.8 Children Looked After from other Local Authorities

On 31 March 2021 213 children looked after living in Cumbria were placed by other local authorities (163 residential and 50 foster/adoptive placements). However, 2020 data (of 174) is taken from nationally published data, whereas the 2021 figure is from locally recorded data and is likely to be an overstatement due to delays in notifications received from placing authorities.

2. Children Looked After: Supply

2.1 Foster Care: Local Authority

(Source: Ofsted Fostering Return 2020/2021)

Number of Foster Carers / Placements

Local Authority fostering placement share (excluding Family and Friends) was 38% on 31st March 2021. Cumbria had a total of 287 fostering households, an increase of 40 from the previous year. This figure includes connected person carers, where there was an increase from 55 to 61. Cumbria had 223 mainstream/short breaks fostering households (an increase from 190 in 2019).

Geographical location of the 223 mainstream households:

31.3.21	In-house mainstream fostering households	Maximum number of placements
Allerdale and Copeland	84	211
Barrow and South Lakeland	68	167
Carlisle and Eden	71	182
Total	223	560

*Note: Some of these placements were unavailable due to the need to match with children already in placement, resignation, ill-health, on hold or at their request.

Profile of Mainstream Foster Carers

Age:

20-29	30-29	40-49	50-59	60+
4	30	86	174	111

Ethnicity:

White	Black/Black British	Asian/Asian British	Other
398	2	2	3

There is a mix of age ranges, with the highest numbers and proportions in the 50-59 years age group, followed by 60+ years. In terms of ethnicity 98% are White British. This is an area to be considered in terms of recruitment as the number and proportion of BME children in care is low but likely to increase.

Approvals

There was a total of 111 households approved in the year. 46 of the households approved were mainstream/short breaks, an increase from 26 in 2019/20. The number of connected person approvals in the year increased from 40 to 57, whilst foster to adopt approvals increased from 3 to 8.

De-Registrations

There were a total of 73 de-registrations in the year; 14 mainstream/short breaks, 52 connected person households and 7 foster to adopt carers. 24 out of the 52 connected person households had ceased fostering because the family took out a special guardianship order.

Foster Carers withdraw or are deregistered from the service for a variety of reasons including Adoption, Special Guardianship Orders, or for personal reasons such as divorce, ill-health or retirement. De-registrations occur at the instigation of the Fostering Service in order to maintain standards. The success of Staying Put in Cumbria has also had an impact on reducing the number of available in-house foster placements.

Primary placement offer for approvals and de-registrations:

Placement Offer Year ending 31 st March 2021	Number of approved carers	Number of approvals in the year	Number of de- registrations
Permanent	80	7	-
Not permanent	118	36	-
Emergency	3	N/A	-
Short Breaks	22	3	-
Mainstream/SB total	223	46	14
Connected person	61	57	52
Fostering to Adopt	3	8	7
Total	287	111	73

Emergency Foster Care

On 31 March 2021 Cumbria had one carer taking emergency foster placements only.

2.2 Children's Homes: Local Authority

(Source: CCC Edge of Care and Residential Team, August 2021)

On 31 March 2021, 16 children were placed in Cumbria's three local authority long-term residential children's homes, which have the capacity to offer up to 16 placements. Over the 20/21 financial year 23 children were cared for in these homes. Cumbria opened a fourth home in April 2021 which accommodates up to 4 children. The residential team work to prepare young people for long term foster care or where possible work towards reunification. Where neither is possible, they offer long term care and support into independent living.

Cumbria has two respite homes located in Carlisle and Kendal. The homes have capacity to offer up to 4 respite placements each at any one time. During 2020-2021 a total of 72 young people had overnight stays at these respite homes.

Cumbria also operates a countywide outreach edge of care service. During 2020-2021 this service supported 139 children/young people and their families.

2.3 Foster Care: Purchased

At 151, the purchased fostering placement share was 21% of all placements and 29% of all foster placements at the end of March 2021. This is a decrease from 2 years ago when, at 202, the purchased fostering placement share was 30% of all placements and 42% of all foster placements. The national high demand for foster placements alongside Cumbria investing in its internal foster care provision in 2018 has contributed to this.

Over the last financial year Cumbria made 61 new placements with 23 Independent Fostering Agencies (source: CCC Finance Team, August 2021). Placements with IFAs are made within Cumbria wherever possible. However, IFA placements are often at a greater distance from the child's home than local authority foster carers.

IFAs with Carers in Cumbria	IFA Foster Carer Households in Cumbria	CLA living in Cumbria IFA placements	Cumbria Children placed	Potential Vacancies	Total Potential Placements in Cumbria
9	69	78	56	43	121

In August 2021 there were 9 IFAs known to have 69 foster carer households living in Cumbria. They are spread across the county with 24 in Barrow / South Lakeland, 23 in Allerdale / Copeland and 15 in Carlisle / Eden (Source: CCC Commissioning Team August 2021). The same number of providers and households were recorded in 2019. Agency foster carers living in neighbouring authorities close to the Cumbrian boundary may be closer to family homes for some children than placements in Cumbria.

2.4 Children's Homes and Residential Schools: Purchased

Over the last financial year Cumbria made 53 new placements with 30 non-local authority residential homes or schools, a reduction from 67 with 32 homes/schools during 2019-2020 (source: CCC Finance & Commissioning, August 2021).

	2018-2019	2019-2020	2020-2021
External Residential Placements Made	72	67	53
Number of Children	63	58	44
Number of Providers	33	32	30

In August 2021 there were 43 non-local authority children's homes / schools / short breaks provisions in Cumbria owned by 17 organisations as below (source: Quarterly Ofsted update for Children's Homes August 2021):

District	Provision Type	Homes / Schools	Max Places	Ofsted Rating
Allerdale	Specialist children's homes	1	4	Requires Improvement to be good
	Short breaks/respice for children with disabilities	1	5	Outstanding
Carlisle	Specialist children's homes	11	47	3 - Outstanding 7 - Good 1 - Requires improvement to be good
	Short breaks/respice for children with disabilities	1	4	Good
Eden	Specialist children's homes	11	41	3 - Outstanding 6 - Good 2 - Yet to have first inspection
	Short breaks/respice for children with disabilities	1	5	Outstanding
South Lakeland	Specialist children's homes	9	35	4 - Outstanding 3 - Good 1 - Requires improvement to be good 1 - Yet to have first inspection
	52 Week Residential special schools	5	132	3 - Outstanding 2 - Good
	Short breaks/respice for children with disabilities	1	5	Good
Barrow	Specialist children's homes	2	5	1 - Good 1 - Yet to have first inspection
Cumbria	Specialist children's homes	34	132	See above
	52 Week Residential special schools	5	132	
	Short breaks for children with disabilities	4	19	
Total		43	283	

5 external children’s homes registered in Cumbria from March 2020 to August 2021. There are more residential homes located in Carlisle, South Lakeland and Eden, and residential schools in South Lakeland. Eden has seen an increase from 6 to 11 specialist children’s homes since July 2019. There has been a net increase of 5 homes from July 2019 to July 2021. There are other non-residential specialist schools located across Cumbria.

2.5 Location of Placements

The number of children placed away from their home locality has increased, with 26.8% of children living more than 20 miles from home and outside Cumbria compared to 23% last year.

Cumbria 31.3.21	Inside Cumbria	Outside Cumbria	Total
Independent Fostering Agencies	57	94	151
Residential Home / School	34	46	80
Total	91	140	231

3. Adoption

3.1 Children Adopted / Placed for Adoption

25 children were adopted during 20/21 (13%), a decrease from 21% the previous year. 31 children were matched with adopters (17 through Cumbria and 14 with adoption agencies), 20 adopter households were approved, and 49 children looked after had a permanence plan of adoption made during the year. This was an increase from 37 CLA in the previous year, showing increased demand and widens the sufficiency gap.

3.2 Regional Adoption Agency

Cumbria County Council became a partner in Adopt Coast to Coast Regional Adoption Agency on 1st April 2021, along with Durham County Council and Together for Children (who provide services for Sunderland City Council). The Hub generates enquiries from people interested in adopting, then adopters and children are considered by the whole RAA when family finding and matching, which is intended to give greater choice and therefore result in more timely and effective matching and placement. The positive aspects of being in an RAA have yet to be realised, with a fall in Cumbria’s adopter recruitment this year.

3.3 Adoption Support

There were 90 children accessing post adoption services from the Adoption Support Team (AST) at the end of March 2021. Work offered includes direct / therapeutic work to promote attachments, managing extremely challenging behaviour and enhanced / therapeutic life story work. The AST were supporting 24 approved adopter households on 31 March 2021 through family finding, matching and placement and to the final order. Support is provided at any earlier stage to prevent difficulties developing which impact adversely on the child or lead to possible breakdowns later.

In addition to the above, therapeutic family services are commissioned externally and there is an ongoing calendar of support events which have mainly been adapted and delivered online during the Covid pandemic. Since the Adoption Support Fund (ASF) became operational in May 2015 Cumbria has made 422 successful applications up to the end of March 2021. Cumbria also accessed short term additional ASF Covid funding during 2021.

4. Care Leavers: Demand

4.1 Care Leavers aged 16+ years

Children aged 16+ who ceased to be looked

2020-2021	Allerdale & Copeland	Barrow & South Lakeland	Carlisle & Eden	Cumbria
All children aged 16+ who ceased to be CLA	21	35	23	79
Percentage	27%	44%	29%	100%

The highest number of children aged 16+ who ceased to be looked after were from the Barrow and South Lakeland district.

Children who remained looked after until their 18th birthday

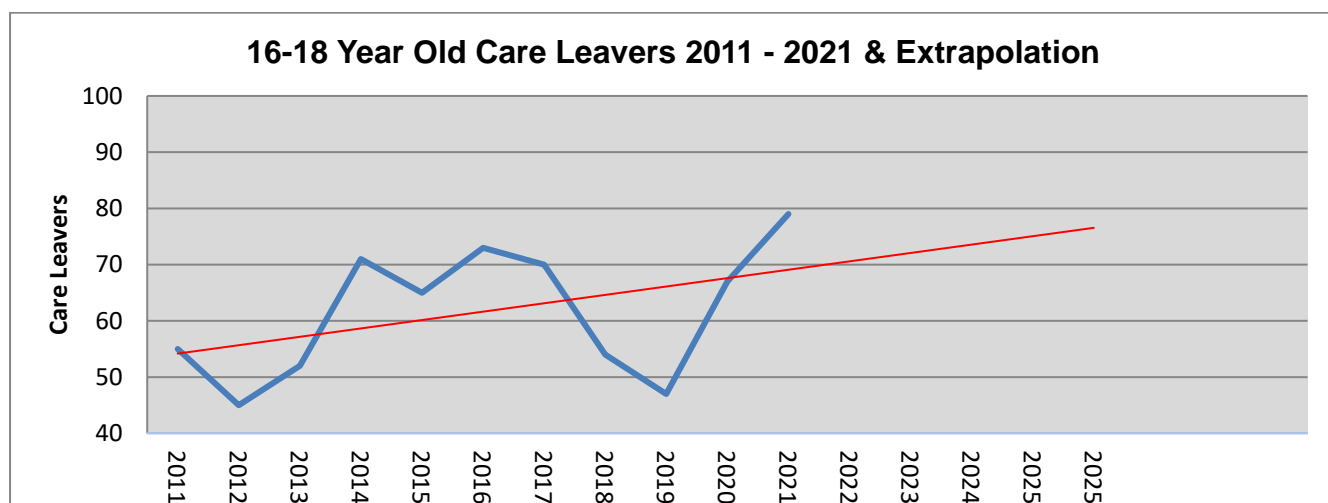
	2019	2020	2021
Children aged 18 when ceased to be CLA	34	54	55
All children aged 16+ who ceased to be CLA	47	67	79
Percentage aged 18	79%	81%	70%

There has been a decrease in the proportion of children aged 16+ who remained looked after until their 18th birthday compared to the previous financial year, although the number has remained static.

Eligible, Relevant and Former Relevant Care Leavers (aged under 21)

31 March 2021	Allerdale & Copeland	Barrow & South Lakeland	Carlisle & Eden	Total
Eligible	49	42	45	136
Relevant	4	7	5	16
Former Relevant	42	61	51	154
Total	95	110	101	306

Care Leavers Projection



The number of care leavers aged 16+ has increased over the last 2 years and looks likely to continue due to rising demand. Due to low numbers this data is treated with caution. Also, the number of 10-15 year olds in care has decreased over the last financial year.

Supported and Independent Living (SAILs)

Over the 2020-2021 financial year 37 young people aged 16-18 living in SAILs placements provided by external agencies, of which 23 were new placements made during the year. On 12 August 2021 there were 17 Cumbria children looked after aged 16-18 in this group living / floating support with accommodation provision (Source: CCC Finance Team, August 2021).

Pathway Plans

The proportion of children with an up-to-date pathways plan was 87% on 31 March 2021. There is a demand for various types of accommodation including Staying Put, Homestays (supported lodgings), Adult Social Care, Shared Lives, supported accommodation and independent living with support.

5. Care Leavers: Supply

5.1 Care leavers aged 19, 20 and 21 in suitable accommodation:

		Cumbria 31/3/2019	Cumbria 31/3/2020	Cumbria 31/3/2021
Care leavers in suitable accommodation	Number suitable	158	133	149
	Number of care leavers aged 19, 20 and 21	169	146	155
	Percentage	93%	91%	96%

The proportion of care leavers aged 19, 20 and 21 living in suitable accommodation has increased over the last few years to 96%.

5.2 Care leavers aged 17-21 by accommodation type:

Type of Accommodation	Total
With parents or relatives	51
Community home or other form of residential care	25
Semi-independent, transitional accommodation	15
Supported lodgings	15
Gone abroad	0
Ordinary lodgings	4
Residence not known	1
No fixed abode / homeless	2
Foyers	5
Independent living	70
Emergency accommodation	0
Bed and breakfast	0
In custody	2
Other accommodation	9
With Former foster carers	23
Total	222

The highest number were in independent living, followed by living with parents or relatives.

5.3 Accommodation Options

Staying Put and Homestays (source: CCC Fostering Team March 2021)

In March 2021 there were 25 young people living in Cumbria Staying Put arrangements with 8 further assessments in progress. There were 29 approved Homestays Supported Lodgings Providers, with 14 young people accessing this provision, and a further 4 assessments in progress. There were 6 households approved to provide support only which 8 young people were accessing, and 1 further assessment in progress.

Supported Housing

Cumbria commissioned a Housing Related Support for Young People (16-24) service which commenced in April 2020. It adopts the principles of the St Basil's Positive Pathway, a nationally accepted model of best practice. Priority is given to young people for whom the Authority has a statutory duty (16-17 year olds at risk of homelessness and formerly looked after children) and young people aged under 18 leaving custody. The Positive Housing Pathway also includes Nightstop Emergency Temporary Accommodation.

Foyers

There are now three Foyers in Cumbria (in Eden, South Lakeland and Copeland) which provide supported accommodation for 16-24 year olds.

Staying Close

Hawthwaite Lane Children's Home (Barrow) provides a self-contained flat for one or two care leavers. Oaktree Children's Home (Eden) offers supported living provision on site for up to three care leavers.

Supported and Independent Living (SAILs)

During August 2021 there were 5 providers known to be offering group living / floating support with accommodation SAILs provision for children looked after aged 16-18 years in Cumbria. Cumbria primarily makes placements using the Placements Northwest Leaving Care Framework.

Move-on Accommodation - Social Housing and Private Rental Market

There continues to be limited supply and choice of social housing across Cumbria. Care leavers receive a higher banding in the Choice Based Letting (CBL) scheme in operation in Cumbria. The County Council works with its district authority partners and private sector landlords to explore opening more move on accommodation and have developed a Cumbria Care Leavers' Housing Protocol alongside partners.

6. Multi-Agency Working

Integrated partnership working is particularly important to support the well-being of children looked after and care leavers. Specific services include:

Partnership / Multi-agency	Children's Trust Cumbria Safeguarding Children Partnership (CSCP) Health and Clinical Commissioning Groups (CCGs) Other Local Authorities District Councils Regional Adoption Agency
Children and Young People	Children's Rights Apprentices Children in Care Councils Care Leavers Forums.
Universal Services	Schools GPs and Midwives Police
Targeted Services	Early Help / Think Family Services Child & Family Support Services CAMHS CLA Nurses Virtual Schools Youth Offending Services Youth Support Services Regulatory bodies (i.e. Ofsted, CQC)
Contracted Specialist Services	Targeted Family Support Therapeutic Services Advocacy Independent Visiting Fostering Support: Membership, Advice and Mediation Adoption Support and Recruitment Missing from Home Interviews Healthy Child Programme PAUSE project

	Specialist Services purchased through placement providers
Regional Working	<p><u>North West</u> Cumbria is a member of Placements Northwest (PNW), a consortium of local authorities undertaking collaborative commissioning work to develop the market and maintain standards. This involves:</p> <ul style="list-style-type: none"> ➤ Information sharing about the provider market ➤ Involvement in Management, Governance Groups and Forums across fostering, residential, education, adoption and leaving care sectors. ➤ Commissioning and using NW Flexible Purchasing Systems (FPS). <p><u>Sub Regional</u> Cumbria has been working with Blackburn & Darwen, Blackpool and Lancashire Councils (BBCL) using DFE Seed Funding to develop the foster care market and new purchasing system.</p> <p><u>North East</u> Cumbria is also working increasingly with the Northeast, developing more opportunities to work collaboratively with Local Authorities and Health in this region, including the commissioning of placements</p>

Note: The data contained within this report has been taken from the Performance and Intelligence Team, using the ICS database, unless otherwise specified. This includes data from the Children Looked After by Local Authorities DfE Returns and Cumbria County Council Children Looked After monthly performance reports.