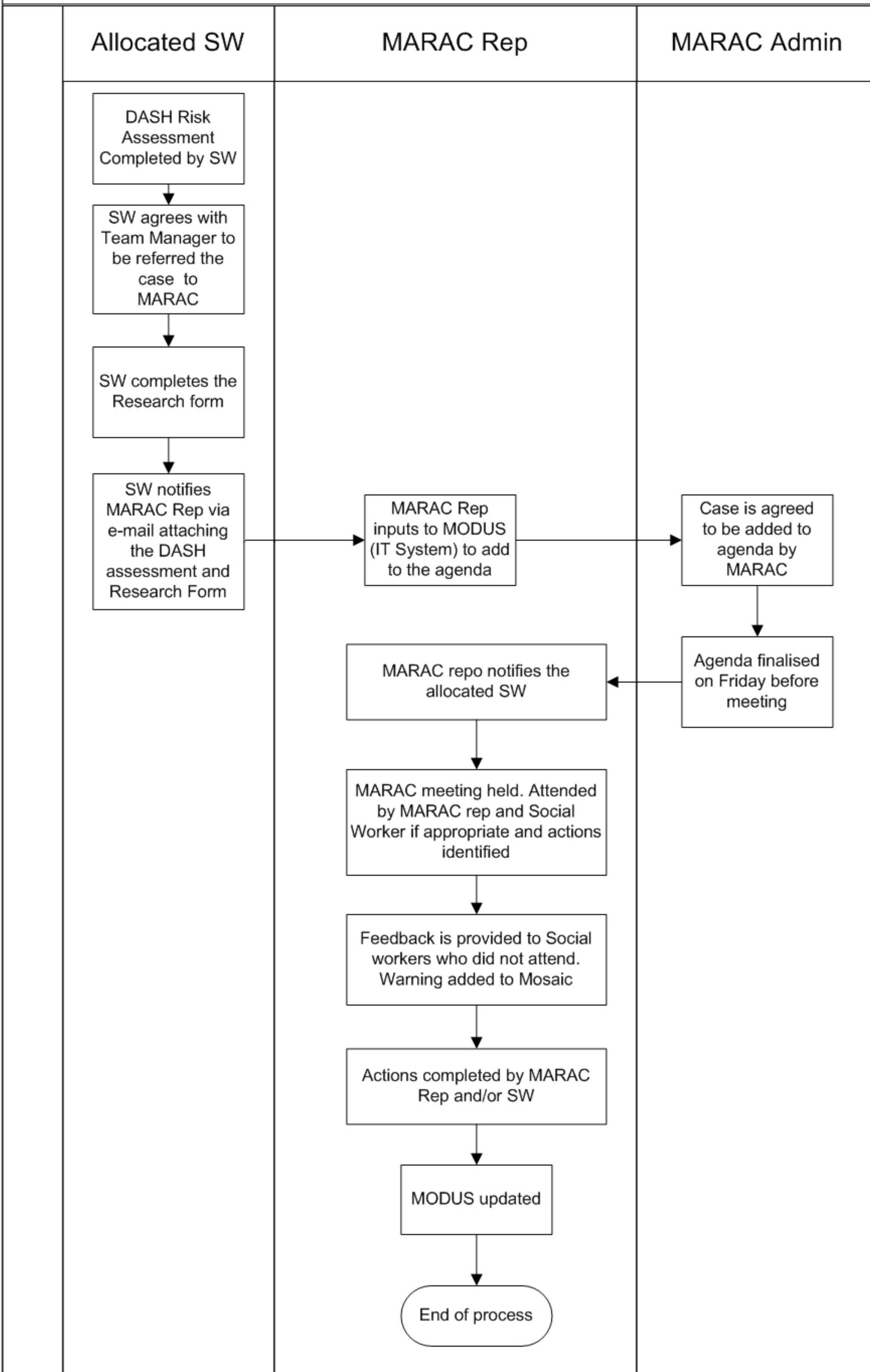


# MARAC process



If the case is not currently opened to Social Care there are 2 options:

1. if the case has been closed in the last 3 months the MARAC Rep will ask the last allocated SW to complete the research form
2. If the case was closed more than 3 months the MARAC Rep will complete the form themselves

If the case referred to MARAC is not opened to Social Care the MARAC Rep will be notified and the research form will be completed as per process

### Questions

1. if the case is being opened to Early Help would EH worker complete the research form and present the case to MARAC?
2. how is the information regarding MARAC referrals recorded in Mosaic?(in addition to MODUS and taking into account confidentiality)