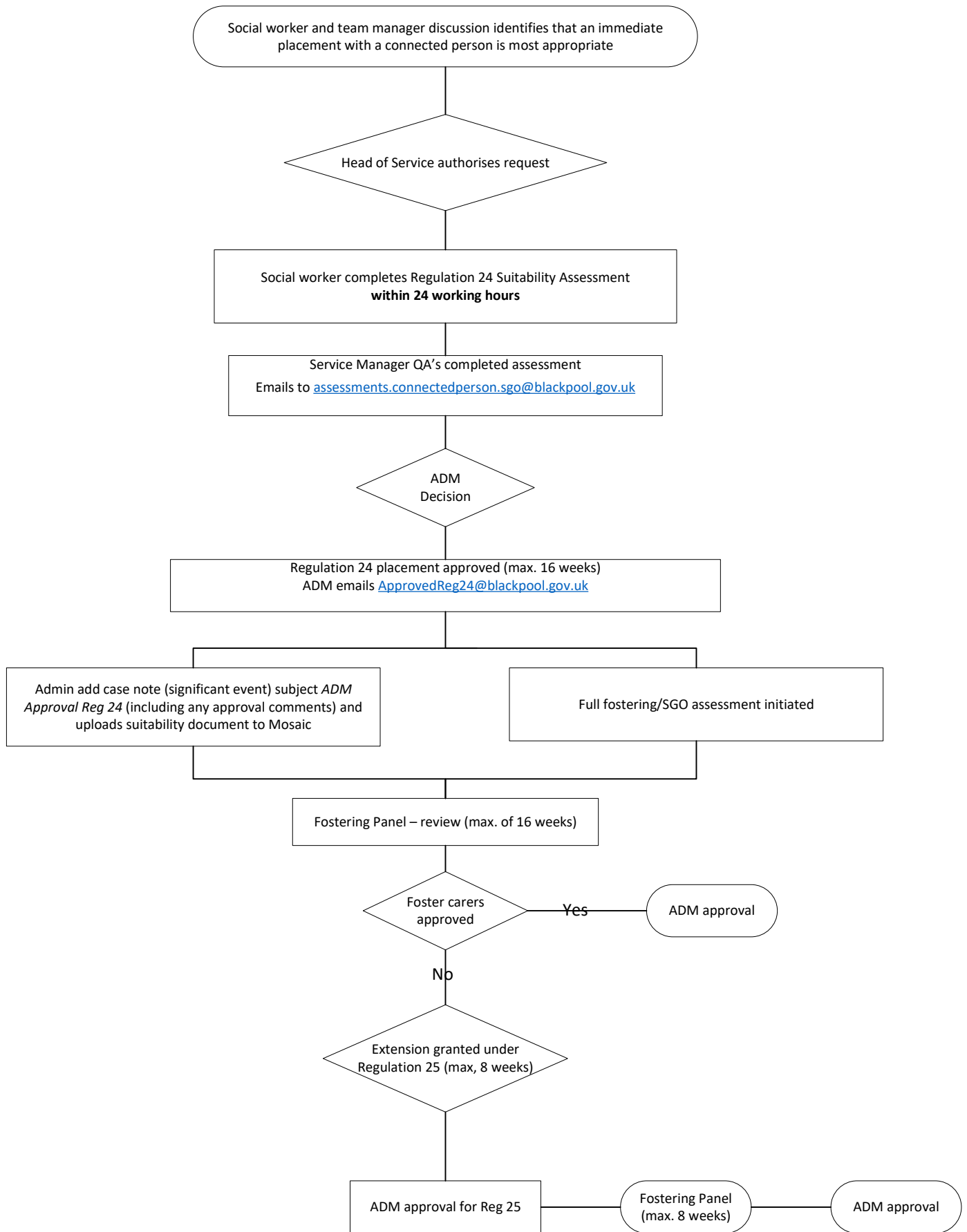


Placements with Connected Persons (under Regulation 24)



1. Failure to follow these approval processes will result in the placements becoming unregulated placements, which require immediate notification to ADM and AD, and a best interest decision to be taken by the ADM (see separate process)

2. This process does not negate the need for normal processes to be followed regarding a child becoming looked after (ie. Care Planning Panel)