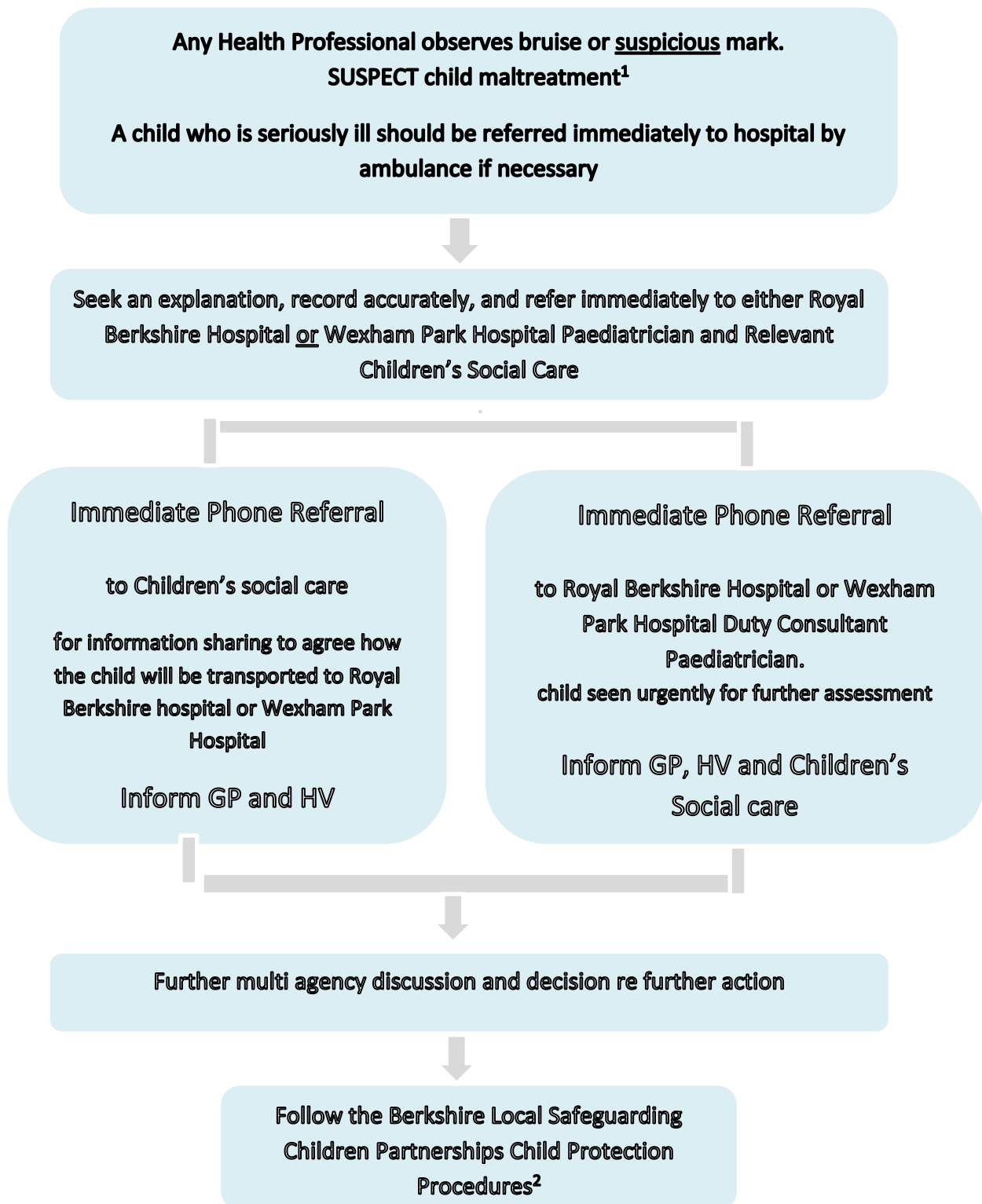


# Protocol for Assessment of Non-Independently Mobile Children Residing in Berkshire who are presenting with Bruising



1 NICE clinical guidelines 89: When to suspect child mistreatment, July 2009 (SUSPECT means a serious level of concern about the possibility of child maltreatment but not proof of it)

2 <https://berks.proceduresonline.com/>