



Bayleaf Care

Young People's Guide



Yew Tree House

Welcome to Yew Tree House

We are proud to call Yew Tree House our home. Here, we help children and young people reach their potential and plan and prepare for their future. There are many reasons why children and young people come to Yew Tree House, but we need to help you feel welcome. Three young people can live in this home, and their ages will range from 6 years to 17 years old.

You may be feeling anxious and scared about moving to a new home, so we have compiled information for you and placed it in this guide. We hope that this guide will give you some ideas about what it is like to live in Yew Tree House. We provide information about what you can expect living in what will be your home, and what the carers will expect from you.

We hope that you will enjoy living in Yew Tree House and that we can assist you in any way that we can help you achieve your goals.



Meet the Yew Tree House Team

Taranjit Longdon
Registered Manager



Jamie Joinson
Responsible Individual



James Dawes
Deputy Manager



Sarah Oakley
Senior Support Worker



Myrthe Hermelink
Senior Support Worker



Demi Harvey
Senior Support Worker



Paul Adey
Senior Support Worker

Lauryn Winter
Senior Support Worker



Richard Elliott
Senior Support Worker



Joe Pallatina
Support Worker



Ibrahim Oladipupo
Support Worker



Imole Femmymale
Support Worker



Ellie Davies
Support Worker



Lois Jones
Support Worker



Hannah Taylor
Support Worker

Debbie Oseghale
Support Worker



Alvin Martin
Support Worker



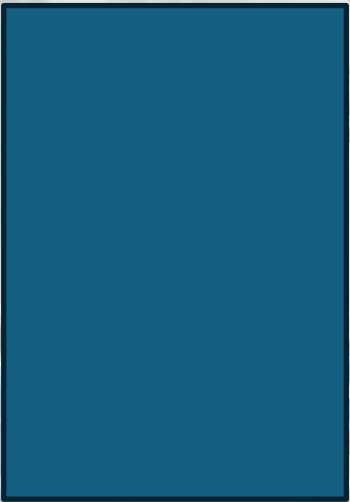
Sony Parivartan
Support Worker



We also have a team of part-time staff who will support with occasional days and nights.



Margaret Brambleby
Waking Night Staff



Vacancy
Waking Night Staff



OUR VALUES

We all strive to achieve our goals

We all take responsibility for our decisions and actions

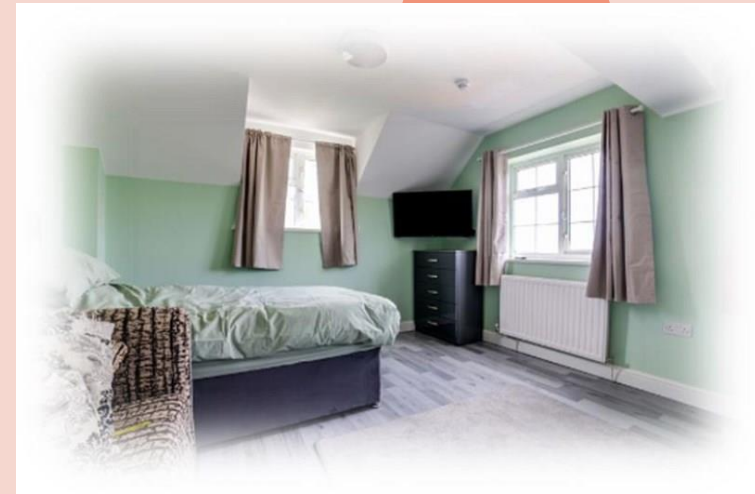
We all respect our home and environment

We trust and support each other

We have fun and laughter

We have respect for each other

Your Bedroom



Each child and young person will have their bedroom and is encouraged to personalise it to their taste. When you arrive at Yew Tree House, we help you to choose things for your bedroom, such as bedding, posters, cushions, and curtains so that you will feel comfortable and feel at home. You can also decorate your bedroom, and staff members will help you to do this. We do have several staff who are artistic and have something of a creative flair.

We do understand that privacy is important to you, so staff members will always knock on your bedroom door before entering your room. There be times when staff members may have to enter your room in an urgent situation, if we are worried about you, in case of an emergency; however, your bedroom space will always be respected.

Education

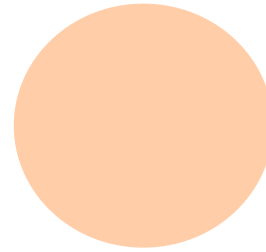


There are a number of schools and colleges in the area where you can attend, however if you are already attending a school or a college and would like to continue doing so, then we will do our best to maintain this for you. Staff members in Yew Tree House will help you to attend school as this is very important and will always help you with any worries that you may have.

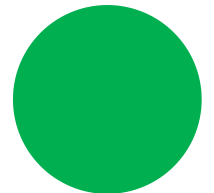
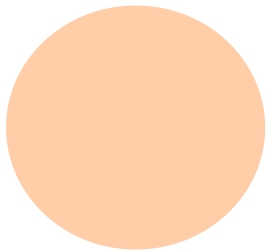
We will look at ways to support you in all of your subjects and training so that you will do well in education and gain the qualifications you need, ready for adult life. For those of you who are older there are many local opportunities for vocational and academic courses, these include:

- A* Levels
- Sport
- Bricklaying
- Animal care
- Mechanics and many others

Pets



At Yew Tree House, we have a cat called 'Spotty' who has recently given birth to two kittens named 'miracle' and 'whiskers'. In the entrance hall there is a fish tank filled with a variety of fish and we also have a large aviary which is currently empty but intend to have our own chickens. We have a tortoise called 'Sheldon' who lives in his vivarium in the lounge!



Health

Your Health is very important and this is something that we care a lot about. When you arrive at Yew

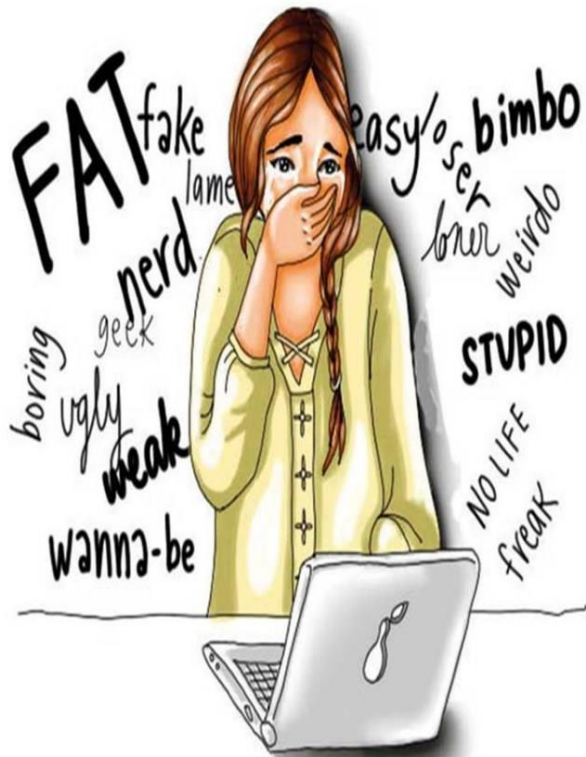
use, we will ensure that you register with a doctor, dentist, and optician.

you request an appointment with a health professional, at any time, we will schedule an appointment for you and accompany you to the health professional. For young people aged 16 or above, you can decide if we accompany you in the appointment and we will support and encourage you to make these appointments yourself.

We take prescribed medication seriously, and staff members will support you to understand when and how these medications are administered, or for the older young people, when and how they can take the medication themselves.



Racism and Bullying

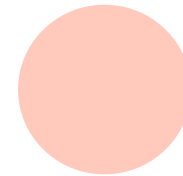
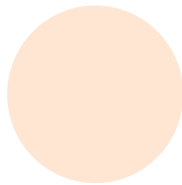


In Yew Tree House, bullying, racism, sexism, or homophobia will not be tolerated at any time. Bullying is where people hurt other people on purpose, and it can take place in many forms. It can be physical, where someone is kicked and punched, it can take place over social network sites, it can also take place through verbal racist abuse.

We are aware that bullying occurs from time to time. If you feel that you are experiencing bullying of any kind, or you see someone else being bullied, then we want to know; you can talk to us and we will take you seriously.

We attempt to stop bullying from occurring in the home by talking about it during our chats within Yew Tree House.

When staff members and children/young people do things right, and do the right things together, Yew Tree House will be an abuse-free, bully-free zone.





children first
CONSULTANCY

MONTHLY INDEPENDENT REG 44 VISITOR



Hello. My name is Sarah Hancock and I will be the monthly independent visitor for your Children's Home. My job is to come to your Home every month and check that you are being looked after and cared for in a way that helps you to be safe and well.

I would like to talk to you on my visits, if you are happy to. If you have something you really want to talk to me about then let staff know and they will contact me and I will be sure to find you when I visit.

I look forward to meeting you on my visit.



At Yew Tree House we value all cultures; we encourage everyone to get involved to celebrate diversity whether this be through arts & crafts or incorporate a different cuisine into the weekly menu. (but don't worry, there will be other food options available too).

Throughout the year, we will acknowledge different cultures by celebrating their cultural events. For example, Chinese New Year, Holi, Pride and Diwali.

You can look at our upcoming events whiteboard situated on the kitchen fridge to find out what is happening each month. Should you ever want to contribute or would like your cultural heritage to be acknowledged and celebrated, then please tell us; your help would be greatly appreciated and welcomed.



Family and Friends Time

When you arrive at Yew Tree House, there will be a planning meeting to see how we can meet your needs and provide you with the best possible care. There will be decisions made about your family time as well as contact with your friends. If the team at Yew Tree House and your Social Worker agree that the situation will be safe, then your family will be able to visit your new home, or you can have contact with them by telephone.

You may not be happy about the contact arrangements, but remember, we want to help you as much as possible, and for your six-monthly review, we will always discuss family time arrangements.

We know that your family is important to you and an important part of who you are. At Yew Tree House, we will work hard with children/young people to keep in contact with their families.



Money and Savings

Children and young people at Yew Tree House will receive pocket money each week. We know that as a teenager, you will want money for fashionable clothes, toiletries etc. so that you look and smell nice, as well as engaging in your hobbies and interests.

If you want to take money out for activities and outings or if you want to purchase something that you have saved for, you just need to speak to staff members in the home and make your request. We will be happy to help you.



The Community and Activities

There are lots of activities and opportunities in the local and surrounding areas. There are lots of venues for shopping in the county of Staffordshire. In the school holidays, staff members will plan activities and will ask you what you would like to do. It's a great chance to visit your favourite places, or even somewhere new!

There is always a packed program of events and holiday things to do in Staffordshire.

Below is our round-up of great things to do locally to Yew Tree House:

1. **Alton Towers Resort:** A theme park with excitement on legendary coasters.
2. **Drayton Manor Resort:** (Amusement and Theme Park)
3. **Conkers:** A venue in the National Forest for outdoor activities including climbing and exploring nature.
4. **Tamworth Snowdome:** Ice skating, skiing and other fun snow activities.
5. **National Memorial Arboretum:** for a bit of history.
6. **Lichfield Cathedral**
7. **Trentham Gardens and Monkey Forest**
8. **Cannock Chase:** lots of outdoor space to explore, ride bikes, play football etc.

& lots and lots more!



Food

Staff members will ensure that each week there is a menu created for the following week, and the menu will include your choices as well as other young people and staff members.

We hope that whilst you are living at Yew Tree House, you will try lots of different foods, as well as fruit and vegetables to keep you healthy.

We encourage all our children and young people to try to learn to cook and we will support you in learning how to cook.

In Yew Tree House, we like to sit down together for our meals; it provides us all with a chance to have a chat and ensure that everyone is okay. Following the children's weekly meeting on a Friday, you will have the opportunity to have a takeaway!



Complaints, Compliments and Comments



During your stay in Yew Trees House, there may be occasions when you are unhappy about any issues that you are experiencing concerning your care or if something has happened to you that you believe is wrong. You must tell us about these things, as it is our responsibility to take you seriously and investigate your concerns.

Similarly, you may be really happy with your Home or the care you receive. It's really important for us to receive your positive feedback too.

'Complaint, compliment and comment' forms are available in the drawer in the lounge. There are also envelopes you can use to address your form to a specific person. You can ask for support from your Key Worker or another member of staff to help you fill in your form if needed.

Once you have filled in your form, put it on the home managers desk – this checked by the Home's management team daily. We hope to resolve any complaints as quickly as possible, so you should receive a response *within 7* days of making one.

Once a month, staff will ask for your feedback regarding how you feel things are going at Yew Tree House and whether there is anything we can do to improve things, or anything else we can do to support you.

Advocacy

To have an advocate means to get independent support from another person who will help you express your views, wishes, and feelings.

There are various ways for you to access an advocacy service, and there are different organisations that offer it. Your placing authority may have links to an organisation that they like to use.

Staff members at Yew Tree House will always support you to get an advocate, indeed, this is something that we encourage.



The
Children's
Society



Children's Rights
Service
Staffordshire

The Children's Commissioner

The Children's Commissioner for England is Rachel de Souza. It is her duty as commissioner to promote and protect children's rights, regarding children who are living away from home or receiving social care services. Her priority is to listen to children and young people across the country, to hear about their lives, and to champion their voices.



0800 528 0731



Therapy



My name is Anne-Marie Gardiner, I am your integrative counsellor and psychotherapist.

My skills include good listening skills, building good therapeutic relationships, assessing individuals needs and the ability to create therapeutic goals with clients. I work creatively by playing games, drawing, and writing but also sit with you and listen to you. I provide psychoeducation to support people to understand their psychological processes. Therapy work is to support individuals to explore any issues or to make sense of their world and support to explore different coping mechanisms if needed.

I have the ability to formulate therapy plans with individuals and to change them when needed. In order for therapy to benefit individuals they need to engage in the process, in the hope that healing and growth can occur.



Your Social Workers name and number:

Your IRO's name and number:

Your Advocate's name and number:

(If you don't have an advocate but you would like one, speak to your Key Worker)

Below are some numbers that you may find useful:

