



WELCOME TO

DOVESIDE





CONTENTS

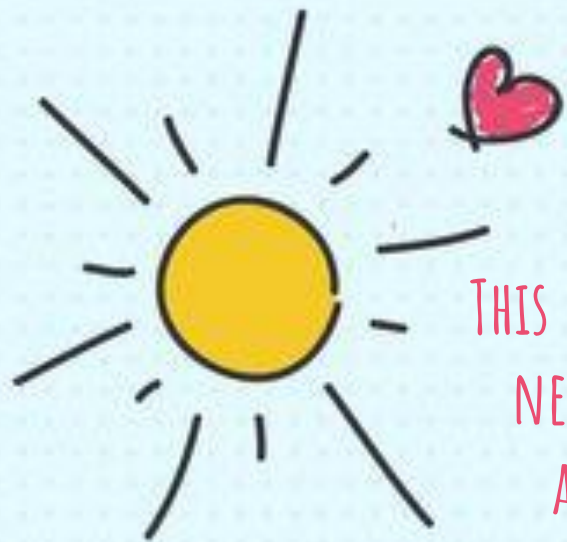
1. WELCOME TO DOVESIDE
2. FACTS AND AIMS OF DOVESIDE
3. WHO WILL CARE FOR YOU
4. GP, DENTIST, AND OPTICIAN
5. THERAPY
6. YOUR KEYWORKER
7. ADVOCATES
8. MOVING INTO DOVESIDE
9. LIVING TOGETHER
10. DAILY SCHEDULE
11. ROOM SEARCHES
12. HEALTHY EATING
13. MEALTIMES
14. BEDTIME
15. YOUR HEALTH MATTERS
16. EXPECTATIONS
17. USING THE COMPUTER
18. BOATS AND WATER
19. CONSEQUENCES
20. EMOTIONS
21. BULLYING
22. FILES AND RECORDS
23. SECURITY
24. COMPLAINTS
25. QUESTIONS
26. USEFUL NUMBERS
27. OFSTED ADDRESS



WELCOME TO DOVESIDE!

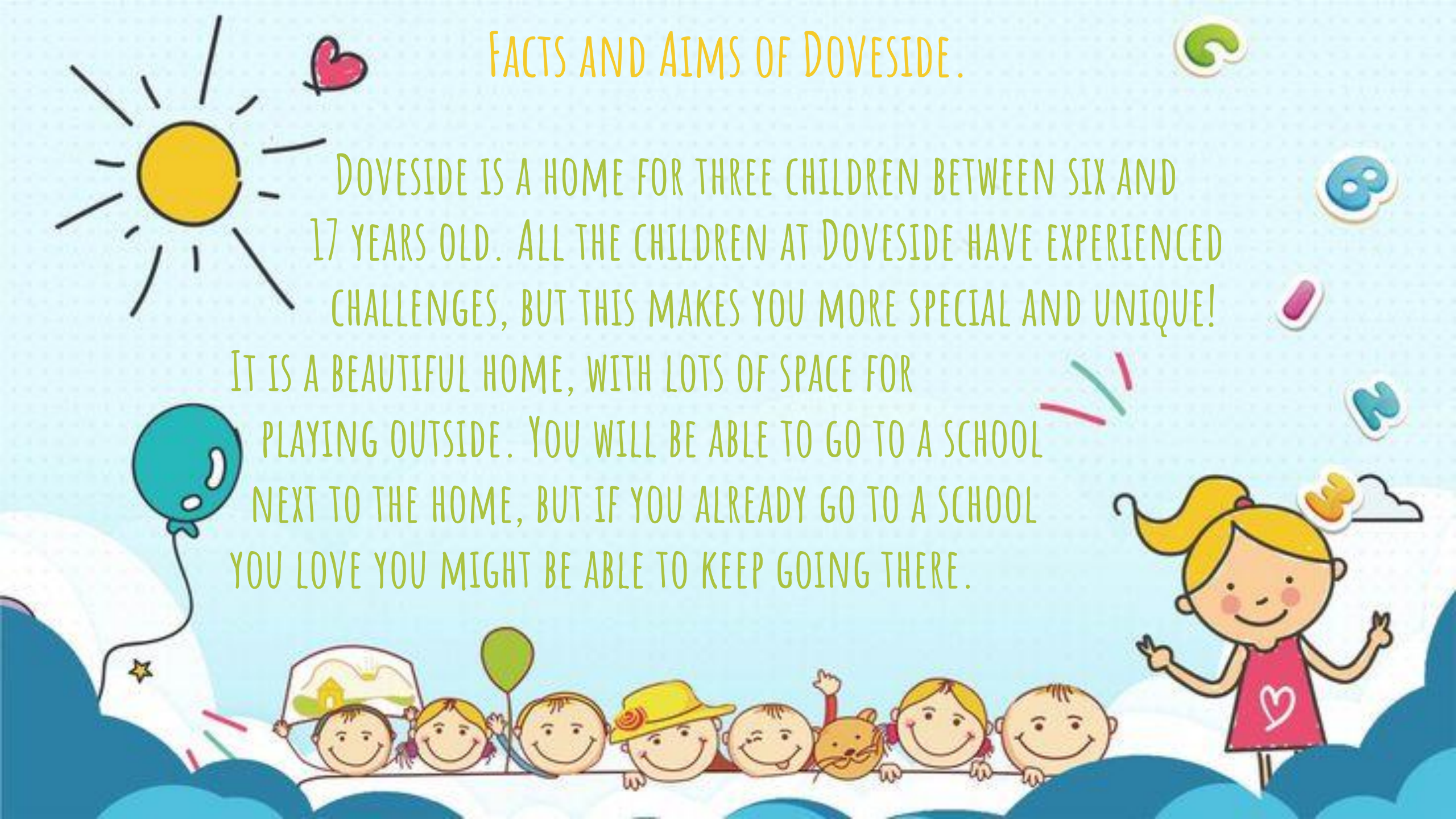
THIS BOOKLET WILL TELL YOU LOTS ABOUT OUR HOME. YOU MIGHT BE NERVOUS AND HAVE LOTS OF QUESTIONS, DON'T BE AFRAID TO ASK US ANYTHING! WE WILL ALWAYS TRY AND ANSWER.

DOVESIDE IS GREAT, AND JUST THE RIGHT SIZE FOR US. YOU WILL HAVE YOUR OWN BEDROOM AND CAN DECORATE IT HOWEVER YOU LIKE. DOVESIDE ALSO HAS LIVING ROOMS, A DINING ROOM AND A KITCHEN. THERE ARE PLENTY OF BATHROOMS. THERE ARE THREE BEDROOMS FOR CHILDREN, AND ONE FOR THE ADULTS LOOKING AFTER YOU.



FACTS AND AIMS OF DOVESIDE.

DOVESIDE IS A HOME FOR THREE CHILDREN BETWEEN SIX AND 17 YEARS OLD. ALL THE CHILDREN AT DOVESIDE HAVE EXPERIENCED CHALLENGES, BUT THIS MAKES YOU MORE SPECIAL AND UNIQUE! IT IS A BEAUTIFUL HOME, WITH LOTS OF SPACE FOR PLAYING OUTSIDE. YOU WILL BE ABLE TO GO TO A SCHOOL NEXT TO THE HOME, BUT IF YOU ALREADY GO TO A SCHOOL YOU LOVE YOU MIGHT BE ABLE TO KEEP GOING THERE.





YOUR CARERS:

AT DOVESIDE THERE ARE STAFF AROUND ALL THE TIME.
THESE PEOPLE WILL HELP TO KEEP YOU SAFE, KEEP YOU HEALTHY,
WORK WITH YOUR FAMILY, FRIENDS AND SOCIAL WORKER
IN YOUR BEST INTEREST, AND HAVE LOTS OF FUN!

WHO WILL CARE FOR YOU?

THERE ARE LOTS OF PEOPLE AT DOVESIDE TO HELP AND SUPPORT YOU. YOU CAN TALK TO ANY MEMBER OF STAFF IF YOU NEED HELP OR HAVE QUESTIONS. STAFF WANT MAKE SURE YOU ARE HAPPY AT DOVESIDE! YOU WILL ALSO BE LOOKED AFTER BY OTHER PEOPLE OUTSIDE OF THE HOME, LIKE YOUR DOCTOR OR DENTIST. YOU CAN ALSO HAVE AN ADVOCATE IF YOU WANT TO TALK TO SOMEONE WHO DOESN'T WORK AT DOVESIDE.





THIS IS REECE. HE IS THE LEAD
DEPUTY MANAGER AT
DOVESIDE. HIS JOB IS TO
HELP BRITTANY MAKE SURE
YOUR HOME IS BRILLIANT!
REECE LIKES GOING TO THE
GYM AND IS BEST FRIENDS
WITH OUR AFRICAN GREY
PARROT, COCO!



THIS IS BRITTANY, SHE IS THE
MANAGER OF DOVESIDE. HER
JOB IS TO MAKE SURE YOU HAVE
A SAFE AND LOVELY HOME, WITH
LOTS OF BRILLIANT STAFF TO
LOOK AFTER YOU. BRITTANY
LIKES BAKING, READING, AND
CLIMBING.



THIS IS DAN. HE IS ONE OF THE SENIORS AT DOVESIDE..



THIS IS STACEY. SHE IS ONE OF THE CARERS AT DOVESIDE. STACEY LOVES ANIMALS, HER FAVOURITE ANIMAL IS A HORSE

THIS IS LAURA. SHE IS ONE OF THE SENIOR CARERS AT DOVESIDE! I ENJOY PLAYING GAMES, READING STORIES, BAKING, GOING FOR WALKS.



THIS IS GARY. HE IS ONE OF THE SENIOR CARERS AT DOVESIDE. GARY KNOWS LOTS ABOUT BOATS, BECAUSE HE LIVES ON ONE!





THIS IS HUMA, SHE IS AN RSW. HUMA SOMETIMES WORKS IN THE DAY AND SOMETIMES WORKS IN THE EVENINGS.



THIS IS ANDREW, HE IS ONE OF OUR NIGHT AWAKES



THIS IS SAIQA, SHE IS AN RSW AND WORKS AS A WAKING NIGHT



THIS IS HAQ. HE IS ONE OF THE CARERS AT DOVESIDE. HE SPEAKS THREE LANGUAGES!



THIS IS CARL, HE IS ONE OF THE CARERS AT DOVESIDE. HE LIKES TO PLAY DARTS AND POOL AND LIKES CAVING



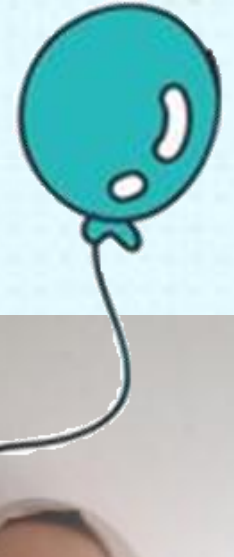
THIS IS ANDY, HE IS ONE OF OUR NIGHT AWAKES



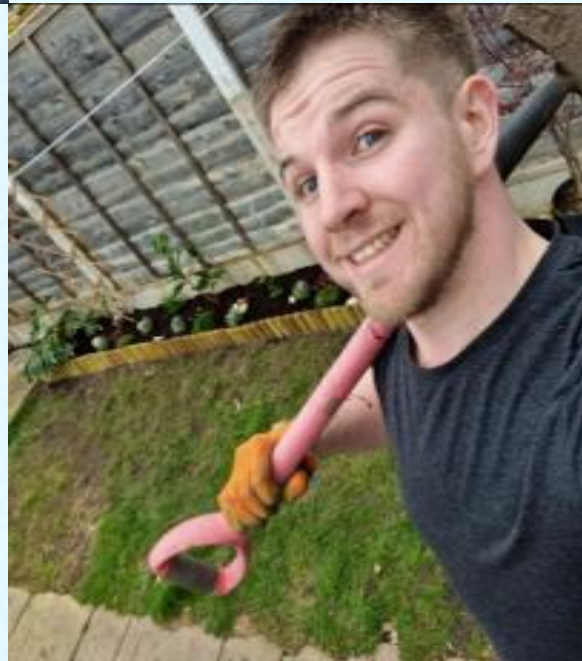
THIS IS AYOJIDE, HE IS ONE OF THE CARERS AT DOVESIDE.



THIS IS VICTOR, HE IS ONE OF THE CARERS AT DOVESIDE.



THIS IS ZAK. HE IS ONE OF THE CARERS AT DOVESIDE. HE SPEAKS THREE LANGUAGES!



THIS IS TAYYABA. SHE IS ONE OF THE CARERS AT DOVESIDE.





WE HAVE LOTS OF ANIMALS AT DOVESIDE. YOU COULD HELP COLLECT EGGS FROM THE HENS, FEED THE DUCKS OR WATCH THE DOVES AND PEACOCKS.

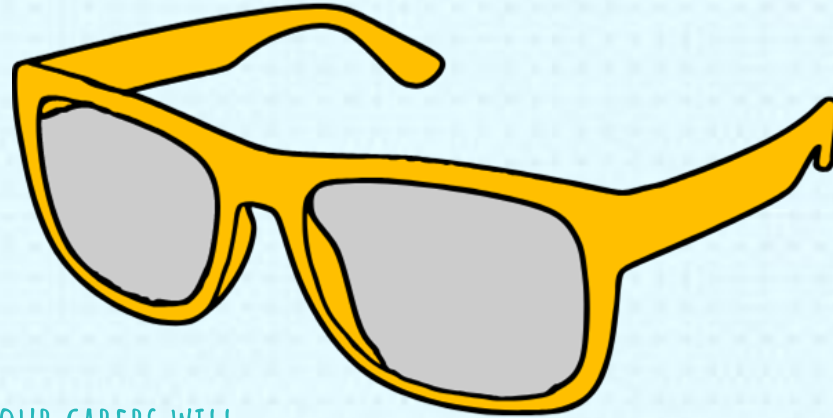


GP, OPTICIAN, DENTIST:

WHEN YOU ARE NOT WELL, STAFF WILL BRING YOU TO SEE YOUR FRIENDLY GP.



YOUR CARERS WILL WANT TO KNOW IF YOU HAVE GOOD EYESIGHT. IF YOU NEED YOUR SIGHT CHECKING OR NEED GLASSES, THEY WILL TAKE YOU TO THE OPTICIAN.



HAVING GOOD TEETH IS VERY IMPORTANT, YOUR DENTIST IS HERE TO HELP YOU TAKE CARE OF YOUR TEETH. STAFF WILL MAKE APPOINTMENTS FOR YOU TO COME AND SEE THEM.



THERAPY:

THIS IS NIKKI, SHE IS THE THERAPIST AT DOVESIDE. NIKKI IS HERE TO HELP YOU AND GIVE YOU A SPACE TO TALK ABOUT HOW YOU ARE FEELING. YOU CAN VISIT NIKKI ON THE BOAT NEAR DOVESIDE!





ADVOCATES:

AN ADVOCATE IS AN ADULT WHO DOESN'T WORK AT DOVESIDE WHO CAN HELP LISTEN TO YOU AND MAKE SURE EVERYONE KNOWS HOW YOU FEEL ABOUT YOUR CARE. THEY WILL HELP YOU TO UNDERSTAND DECISIONS THAT ARE MADE ABOUT YOU.

IF YOU WANT AN ADVOCATE YOU CAN SPEAK TO YOUR KEYWORKER, YOUR SOCIAL WORKER, OR ANY PROFESSIONAL ADULT YOU TRUST.



MOVING INTO DOVESIDE:

THERE ARE LOTS OF REASONS PEOPLE MIGHT COME TO LIVE AT DOVESIDE. IT MIGHT NOT BE SAFE OR POSSIBLE RIGHT NOW FOR YOU TO LIVE WITH YOUR FAMILY. THAT CAN BE VERY HARD, BUT THE STAFF AT DOVESIDE WANT YOU TO BE HAPPY HERE. THEY WON'T REPLACE YOUR FAMILY, BUT THEY DO CARE FOR YOU. THEY WILL RESPECT YOU AND PROVIDE YOU WITH LOTS OF OPPORTUNITIES.

IT MIGHT BE DIFFICULT AT FIRST AND MAY FEEL STRANGE. WE WANT YOU TO FEEL WELCOME AND ENJOY LIVING HERE.



LIVING TOGETHER:

WE HAVE SOME HOUSE RULES THAT HELP US TO LIVE TOGETHER.

ALWAYS TELL THE TRUTH

BE KIND TO EACH OTHER

RESPECT EACH OTHER'S PRIVATE SPACES

LOOK AFTER EACH OTHER

LISTEN TO OTHER PEOPLE'S VIEWS AND TREAT THEM WITH RESPECT

DON'T BE RACIST OR SEXIST

RESPECT OTHER PEOPLE'S RELIGIONS

DON'T BE A BULLY



DAILY SCHEDULE:

AT DOVESIDE YOU WILL HAVE A DAILY SCHEDULE. THIS WILL BE A PLAN OF THINGS YOU WILL DO EACH DAY. IT WILL INCLUDE THINGS LIKE HAVING YOUR MEALS, BATHING, APPOINTMENTS, SCHOOL, AND FUN ACTIVITIES! YOU CAN HELP STAFF TO WRITE YOUR SCHEDULE, AND TELL THEM WHAT YOU WOULD LIKE TO DO.



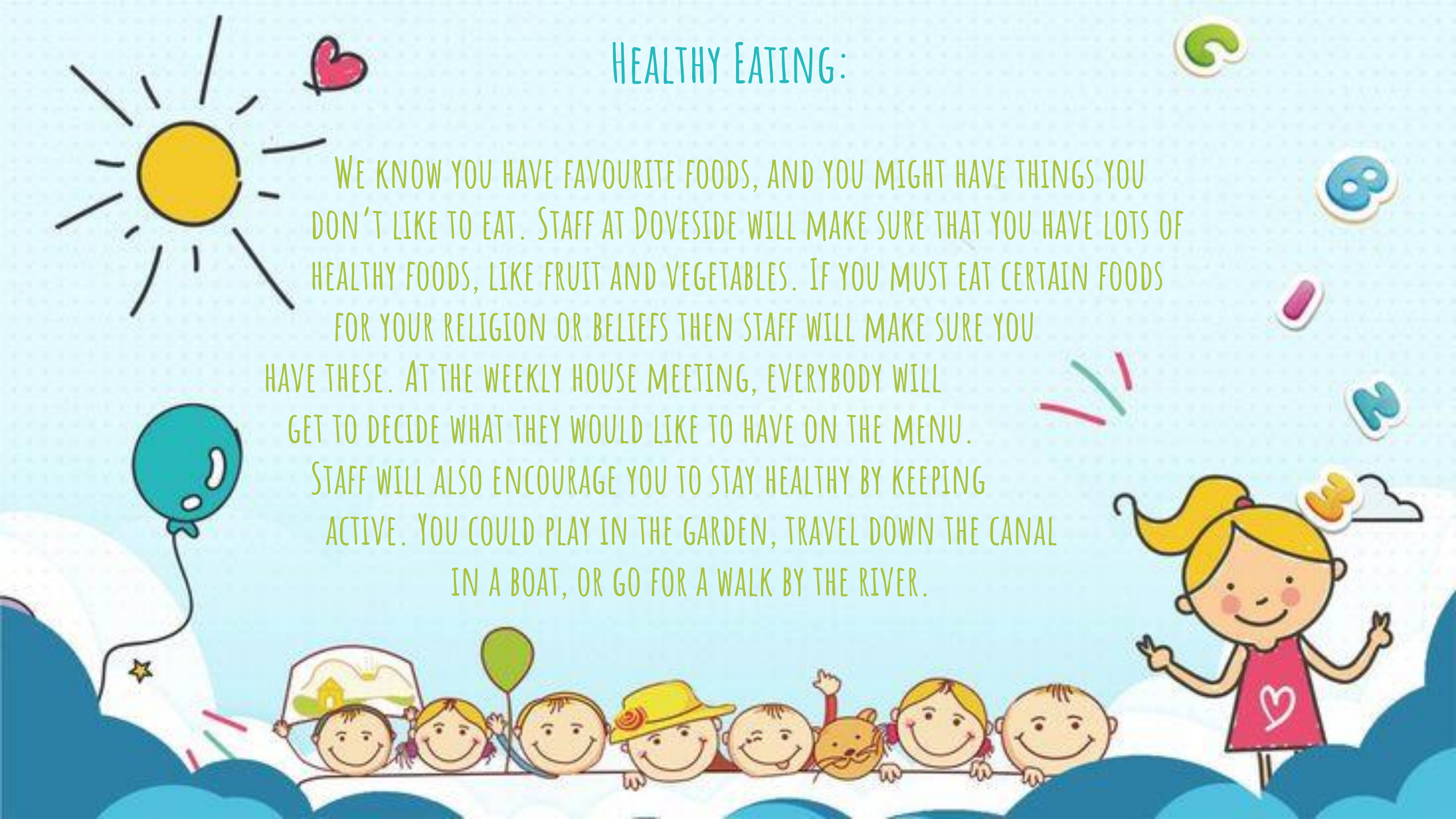
ROOM SEARCHES:

YOU WILL HAVE YOUR OWN BEDROOM AT DOVESIDE. THIS IS YOUR SPACE, AND EVERYONE WILL ASK PERMISSION BEFORE COMING IN. STAFF WILL CHECK EVERY DAY THAT YOUR BEDROOM IS CLEAN AND TIDY, BUT THEY WON'T GO THROUGH YOUR PERSONAL POSSESSIONS. IF STAFF ARE WORRIED, THEY MAY HAVE TO DO A ROOM SEARCH TO HELP KEEP YOU SAFE. THIS MAY BE TO LOOK FOR THINGS THAT YOU SHOULD NOT HAVE IN YOUR ROOM BECAUSE THEY ARE DANGEROUS. THESE SEARCHES HELP TO KEEP EVERYONE SAFE.



HEALTHY EATING:

WE KNOW YOU HAVE FAVOURITE FOODS, AND YOU MIGHT HAVE THINGS YOU DON'T LIKE TO EAT. STAFF AT DOVESIDE WILL MAKE SURE THAT YOU HAVE LOTS OF HEALTHY FOODS, LIKE FRUIT AND VEGETABLES. IF YOU MUST EAT CERTAIN FOODS FOR YOUR RELIGION OR BELIEFS THEN STAFF WILL MAKE SURE YOU HAVE THESE. AT THE WEEKLY HOUSE MEETING, EVERYBODY WILL GET TO DECIDE WHAT THEY WOULD LIKE TO HAVE ON THE MENU. STAFF WILL ALSO ENCOURAGE YOU TO STAY HEALTHY BY KEEPING ACTIVE. YOU COULD PLAY IN THE GARDEN, TRAVEL DOWN THE CANAL IN A BOAT, OR GO FOR A WALK BY THE RIVER.





MEALTIMES:

MEALTIMES ARE NOT SET, BUT YOU WILL BE ENCOURAGED TO HAVE A REGULAR ROUTINE.

BREAKFAST IN THE MORNING

LUNCH IN THE MIDDLE OF THE DAY

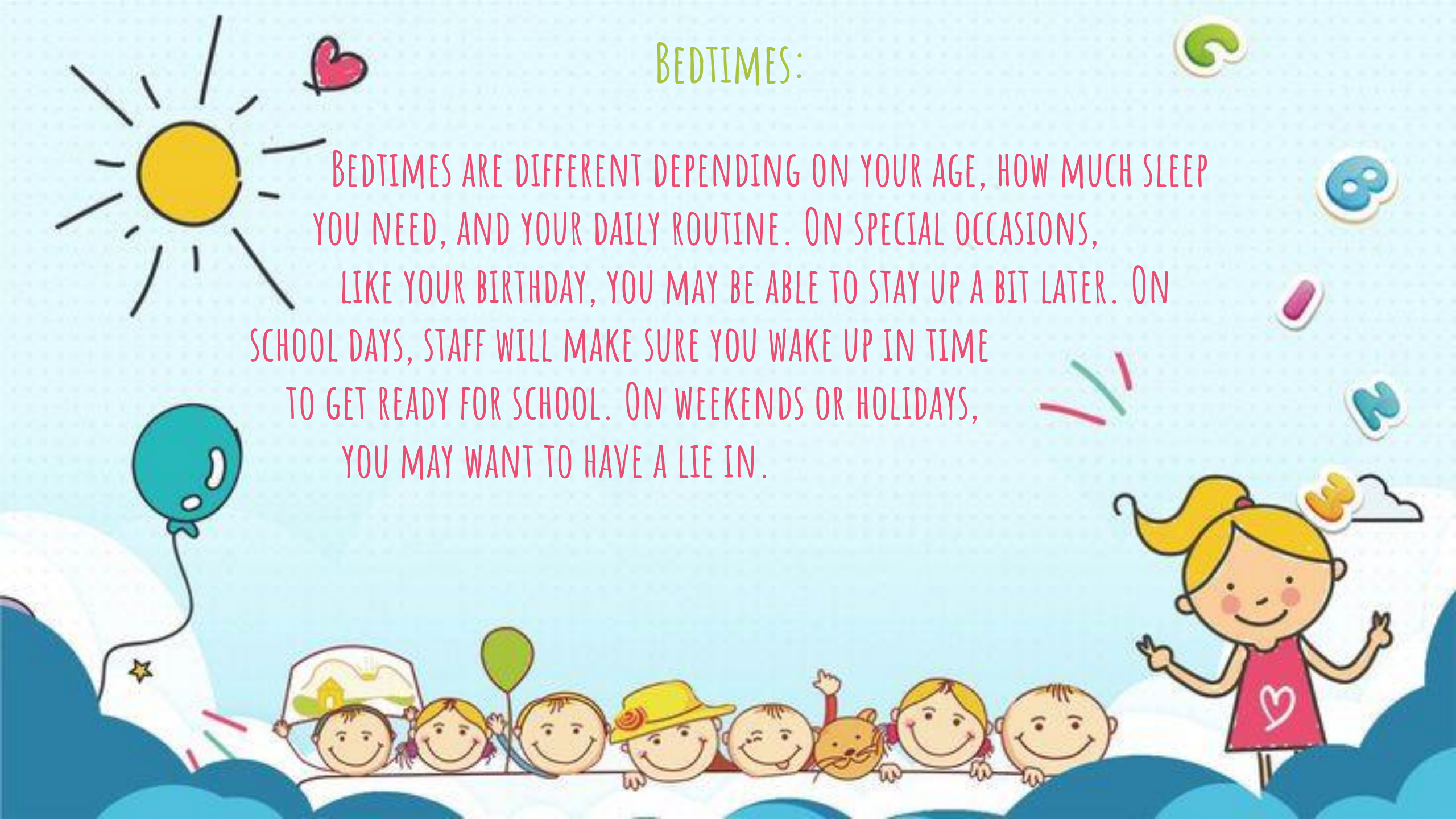
DINNER TOGETHER IN THE EVENING

THERE WILL BE HEALTHY SNACKS AVAILABLE THROUGHOUT THE DAY – YOU CAN CHOOSE WHAT YOU WOULD LIKE FOR SNACKS AND MEALS AT OUR HOUSE MEETINGS. YOU MAY WANT SOME SUPPER BEFORE BED. STAFF WILL HELP MAKE SURE YOU HAVE FOOD AVAILABLE TO YOU AT THE RIGHT TIMES.



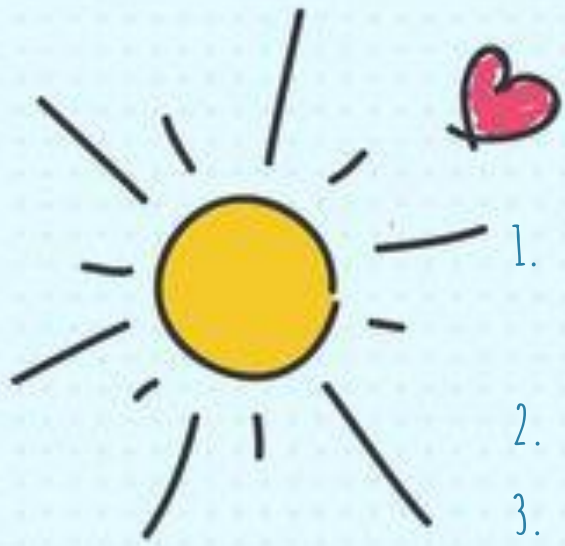
BEDTIMES:

BEDTIMES ARE DIFFERENT DEPENDING ON YOUR AGE, HOW MUCH SLEEP YOU NEED, AND YOUR DAILY ROUTINE. ON SPECIAL OCCASIONS, LIKE YOUR BIRTHDAY, YOU MAY BE ABLE TO STAY UP A BIT LATER. ON SCHOOL DAYS, STAFF WILL MAKE SURE YOU WAKE UP IN TIME TO GET READY FOR SCHOOL. ON WEEKENDS OR HOLIDAYS, YOU MAY WANT TO HAVE A LIE IN.



DOVESIDE EXPECTATIONS:

1. WE RESPECT AND VALUE EACH OTHER AND DO NOT CAUSE HARM TO EACH OTHER. NO BULLYING!
2. WE DO NOT CAUSE DAMAGE TO OUR HOME OR THINGS IN IT.
3. WE ALL FOLLOW THE RULES OF THE HOUSE, TO KEEP OURSELVES AND OTHERS SAFE.
4. WE WILL HELP YOU GO TO SCHOOL. WE WILL MAKE SURE YOU HAVE EVERYTHING YOU NEED, LIKE THE RIGHT UNIFORM AND EQUIPMENT, AND WILL HELP YOU TO GET THERE ON TIME EVERY DAY.
5. WE DO NOT LEND OR BORROW THINGS FROM OTHER PEOPLE.
6. WE DO NOT GO INTO OTHER PEOPLE'S BEDROOMS.



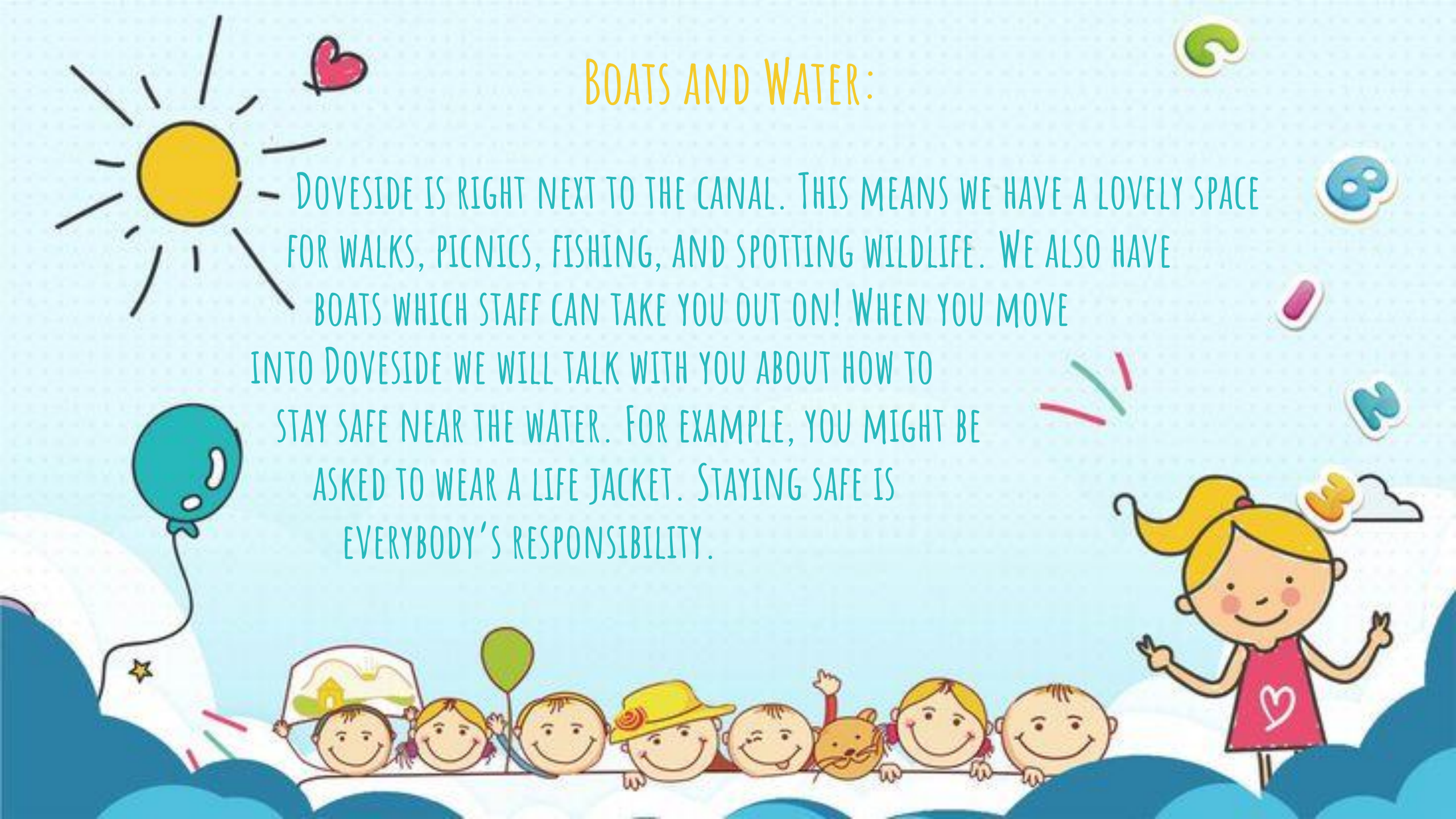
USING COMPUTERS:

WE HAVE WI-FI, AND YOU CAN USE THIS TO GO ONLINE. YOU MAY HAVE YOUR OWN DEVICE SUCH AS A PHONE, TABLET OR COMPUTER. YOUR SOCIAL WORKER WILL GIVE PERMISSION FOR YOU TO USE THIS. THERE MAY BE TIMES WHEN WE WILL NEED TO CHECK YOUR INTERNET USE, WE WILL EXPLAIN THIS TO YOU IN ADVANCE AND WILL GET PERMISSION FROM YOUR SOCIAL WORKER. WE WILL ONLY DO THIS TO KEEP YOU SAFE.



BOATS AND WATER:

DOVESIDE IS RIGHT NEXT TO THE CANAL. THIS MEANS WE HAVE A LOVELY SPACE FOR WALKS, PICNICS, FISHING, AND SPOTTING WILDLIFE. WE ALSO HAVE BOATS WHICH STAFF CAN TAKE YOU OUT ON! WHEN YOU MOVE INTO DOVESIDE WE WILL TALK WITH YOU ABOUT HOW TO STAY SAFE NEAR THE WATER. FOR EXAMPLE, YOU MIGHT BE ASKED TO WEAR A LIFE JACKET. STAYING SAFE IS EVERYBODY'S RESPONSIBILITY.





REWARDS AND CONSEQUENCES.

STAFF AT DOVESIDE EXPECT YOU TO BEHAVE IN A GOOD WAY. WE BELIEVE IN REWARDING GOOD BEHAVIOUR, AND LOVE TO BE ABLE TO SHARE REWARDS AND TREATS.

STAFF WILL HELP YOU TO UNDERSTAND THE IMPACT YOUR BEHAVIOUR HAS ON OTHERS. IF YOU ARE NOT NICE TO OTHERS, YOU MAY RECEIVE A CONSEQUENCE. THIS MIGHT BE SOMETHING TO HELP THE OTHER PERSON TO FEEL BETTER, AND SAY SORRY FOR WHAT YOU DID.



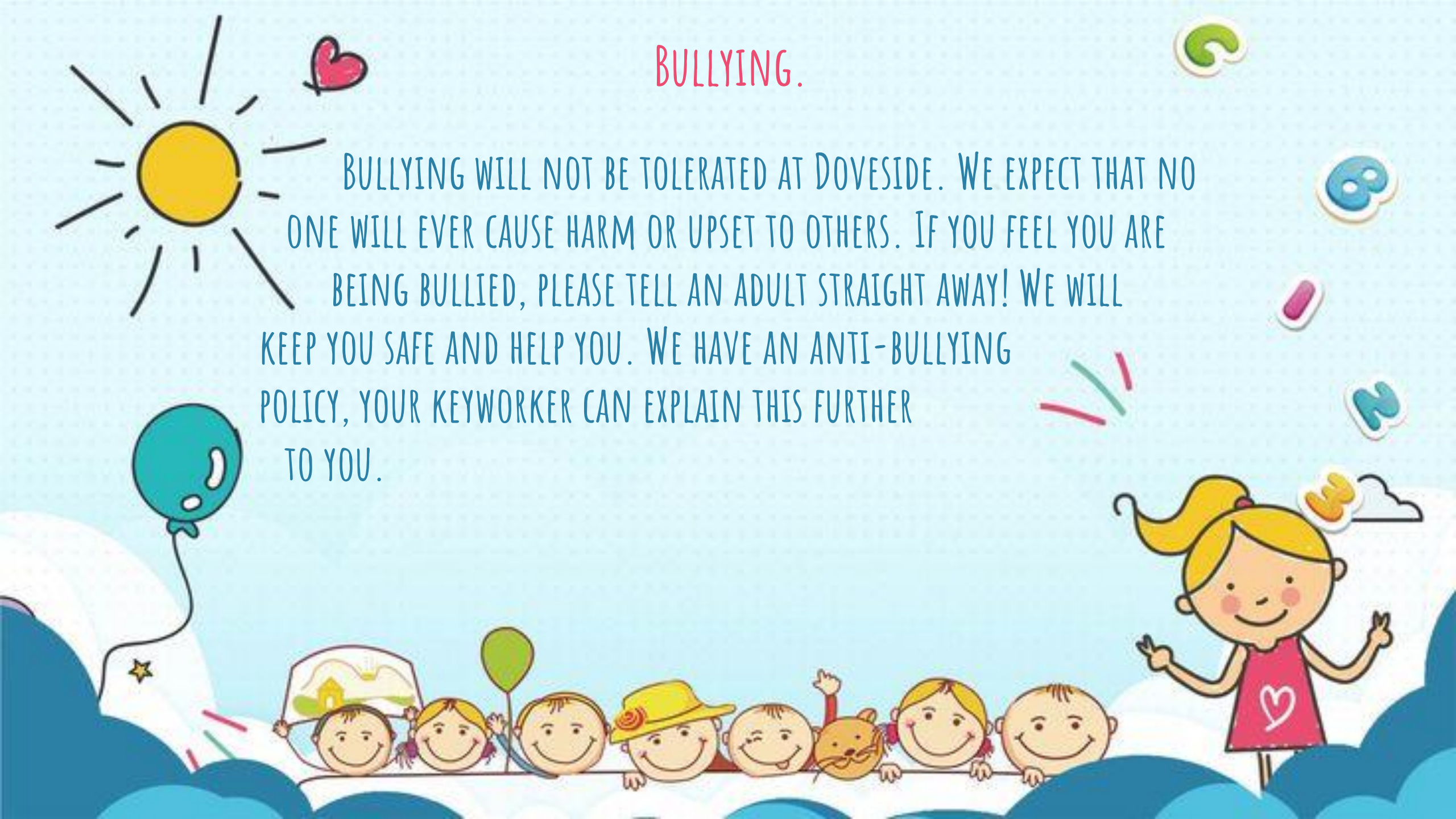
EMOTIONS.

WE ALL FEEL ANGRY AND FED UP SOMETIMES. THAT'S OK, AND WHEN YOU FEEL THIS WAY STAFF WILL TRY TO HELP AND WILL TALK TO YOU. THERE MAY BE TIMES WHEN YOU CAN BEHAVE IN WAYS THAT MIGHT HURT YOURSELF OR OTHERS. IF STAFF CANNOT STOP YOU, THEY MAY HAVE TO HOLD YOU. ALL THE STAFF ARE TRAINED TO HELP YOU AT THESE TIMES, AND WILL ONLY HOLD YOU IF THERE IS NOTHING ELSE THEY CAN DO. WE NEED TO KEEP YOU, AND EVERYONE ELSE IN THE HOME, SAFE.



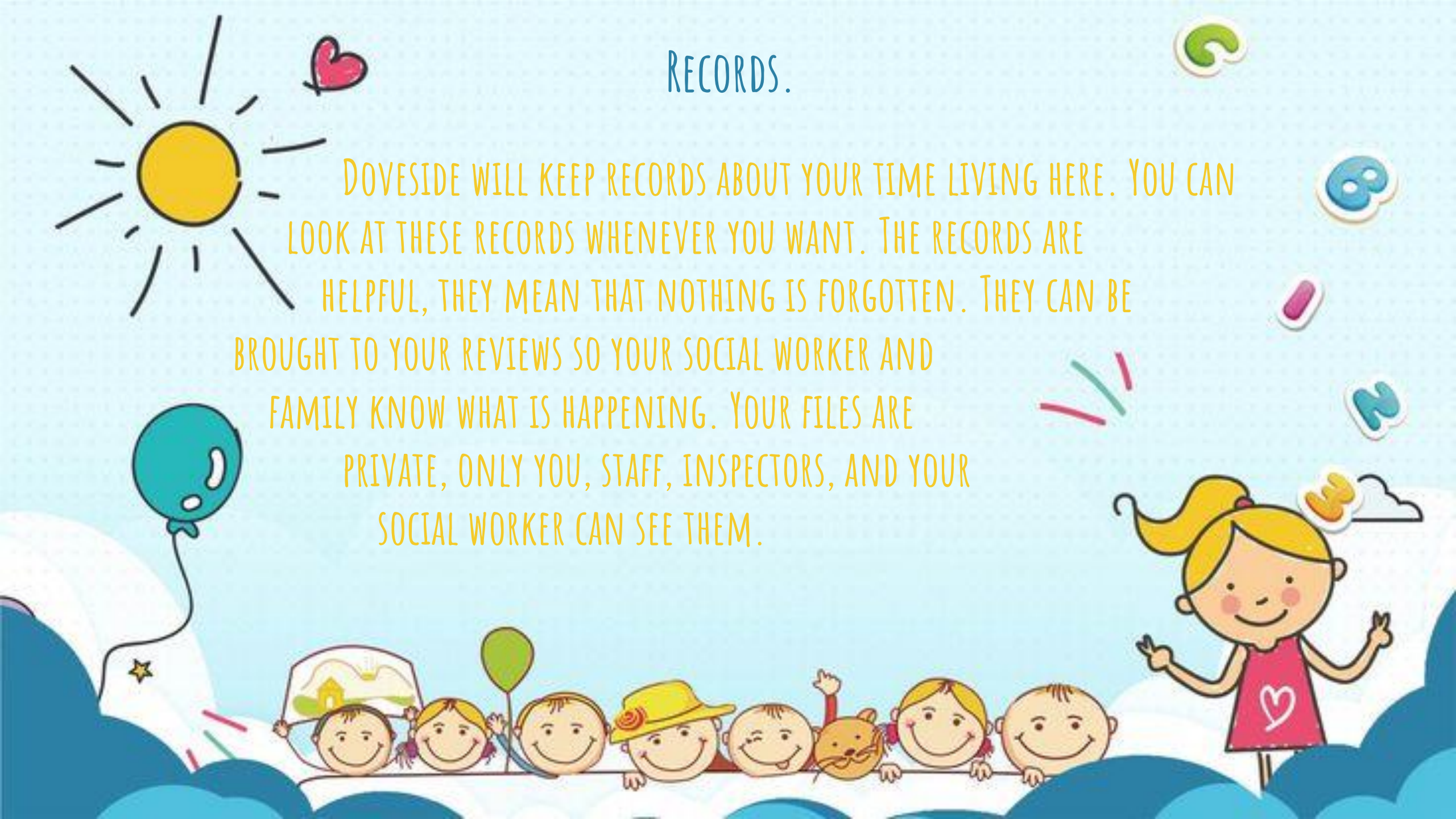
BULLYING.

BULLYING WILL NOT BE TOLERATED AT DOVESIDE. WE EXPECT THAT NO ONE WILL EVER CAUSE HARM OR UPSET TO OTHERS. IF YOU FEEL YOU ARE BEING BULLIED, PLEASE TELL AN ADULT STRAIGHT AWAY! WE WILL KEEP YOU SAFE AND HELP YOU. WE HAVE AN ANTI-BULLYING POLICY, YOUR KEYWORKER CAN EXPLAIN THIS FURTHER TO YOU.



RECORDS.

DOVESIDE WILL KEEP RECORDS ABOUT YOUR TIME LIVING HERE. YOU CAN LOOK AT THESE RECORDS WHENEVER YOU WANT. THE RECORDS ARE HELPFUL, THEY MEAN THAT NOTHING IS FORGOTTEN. THEY CAN BE BROUGHT TO YOUR REVIEWS SO YOUR SOCIAL WORKER AND FAMILY KNOW WHAT IS HAPPENING. YOUR FILES ARE PRIVATE, ONLY YOU, STAFF, INSPECTORS, AND YOUR SOCIAL WORKER CAN SEE THEM.



SECURITY.

WE HAVE LOTS OF WAYS TO STAY SAFE AT DOVESIDE. ONE OF THESE IS THAT WE HAVE CAMERAS OUTSIDE OF THE HOME. THIS IS TO MAKE SURE THAT NO ONE COMES TO YOUR HOME WHO IS NOT ALLOWED. WE ALSO HAVE AN ALARM WHICH WE SET AT NIGHT TO LET US KNOW WHEN DOORS OPEN. THIS MEANS THAT IF YOU NEED HELP IN THE NIGHT, YOUR STAFF WILL KNOW AND WILL BE ABLE TO COME TO YOU QUICKLY.



COMPLAINTS/COMPLIMENTS.

IT IS IMPORTANT THAT YOUR VOICE IS HEARD. YOU CAN TALK TO THE ADULTS IN THE HOME, YOUR KEYWORKER, THE DOVESIDE MANAGER, OR YOUR SOCIAL WORKER. YOU WILL HAVE LOTS OF OPPORTUNITIES TO MAKE SUGGESTIONS. SOMETIMES, THINGS MIGHT NOT GO RIGHT AND YOU MIGHT WANT TO COMPLAIN. OR SOMETIMES THINGS MAY BE SO GOOD THAT YOU WANT TO MAKE A COMPLIMENTS, YOUR KEYWORKER, OR ANY OTHER STAFF MEMBER CAN EXPLAIN TO YOU HOW YOU CAN MAKE A COMPLAINT.



QUESTIONS

WILL I HAVE MY OWN BEDROOM?

YES! EVERYONE HAS A RIGHT TO THEIR PRIVACY. WE WILL ALWAYS KNOCK ON YOUR DOOR BEFORE ENTERING YOUR ROOM.

CAN I STAY IN TOUCH WITH FAMILY AND FRIENDS?

YES! STAFF WILL HELP YOU TO STAY IN TOUCH WITH PEOPLE WHO ARE IMPORTANT TO YOU WHERE POSSIBLE. WE CAN TALK TO YOUR SOCIAL WORKER ABOUT YOUR IMPORTANT PEOPLE.

CAN I BRING MY PERSONAL POSSESSIONS?

YES! YOU CAN PERSONALISE YOUR BEDROOM. YOUR KEYWORKER WILL TAKE YOU TO BUY DECORATIONS.

DO I HAVE CHORES?

YOU NEED TO KEEP YOUR OWN SPACE TIDY. STAFF CAN HELP YOU WITH THIS. YOU WILL ALSO HELP LOOK AFTER THE SHARED SPACES IN THE HOUSE.

YOU CAN ASK ADULTS AT DOVESIDE ANY OTHER QUESTIONS YOU MIGHT HAVE

CAN I HAVE VISITORS?

YES! BUT YOU MAY HAVE TO STAY IN CERTAIN PARTS OF THE HOUSE, AND STAFF MAY HAVE TO STAY WITH YOU. WE CAN DISCUSS THIS WITH YOUR SOCIAL WORKER.

CONTACTS.

**Ofsted**
raising standards
improving lives
0800 123 1231

coramVoice 
getting young voices heard
020 7833 5792

NSPCC 
HELPLINE
0808 800 5000
help@nspcc.org.uk

FRANK
0800 77 66 00 talktofrank.com
Friendly, confidential drugs advice

**Children's
Commissioner**
0800 528 0731 ting children's rights

ChildLine
0800 1111 

THE CHILDREN'S COMMISSIONER

THE CHILDREN'S COMMISSIONER IS RESPONSIBLE FOR PROMOTING AND PROTECTING CHILDREN'S RIGHTS AND ADVOCATING THEIR VIEWS AND INTERESTS. THIS MEANS THAT IT IS THEIR JOB TO MAKE SURE THAT YOU ARE BEING LISTENED TO AND ARE BEING LOOKED AFTER IN THE BEST WAY POSSIBLE. THERE ARE LOTS OF WAYS FOR YOU TO CONTACT THE CHILDREN'S COMMISSIONER. YOU CAN GO ON

THE WEBSITE WWW.CHILDRENSCOMMISSIONER.GOV.UK

OR EMAIL HELP.TEAM@CHILDRENSCOMMISSIONER.GOV.UK

OR CALL 0800 528 0731.





OFSTED.

OFSTED REGULATE CHILDREN'S HOMES. THAT MEANS THEIR JOB IS TO MAKE SURE THAT YOUR HOME AND THE STAFF THERE ARE DOING EVERYTHING RIGHT TO KEEP YOU SAFE AND MAKE YOU HAPPY AND HEALTHY. AN INSPECTOR WILL COME OUT AT LEAST ONCE A YEAR TO LOOK AROUND, AND MAY WANT TO TALK TO YOU. YOU CAN SPEAK TO THEM AT ANY TIME IF YOU HAVE ANY WORRIES ABOUT DOVESIDE. THEIR ADDRESS IS

PICCADILLY GATE
STORE STREET
MANCHESTER
M1 2WD