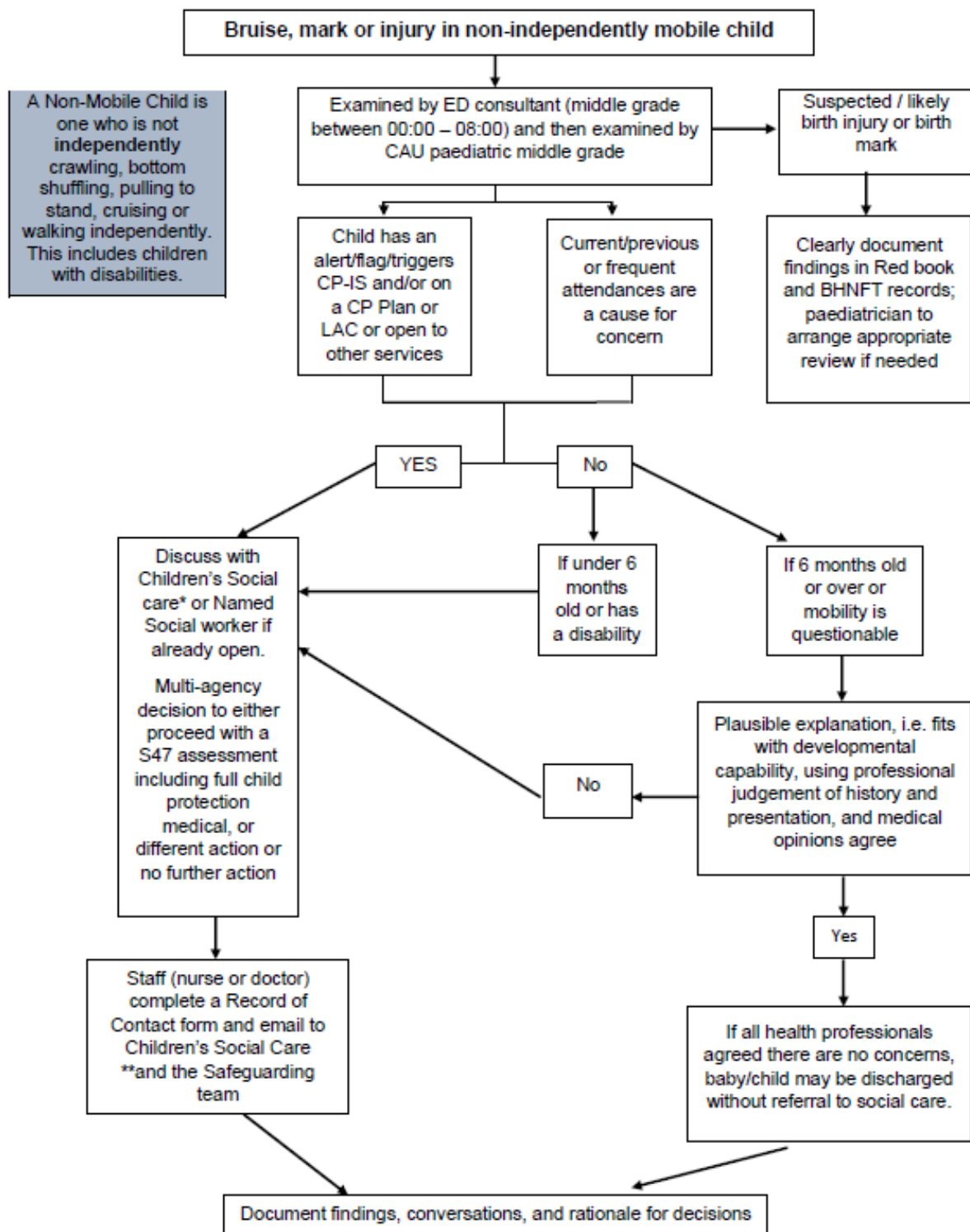


Appendix a – Procedure for Emergency Department staff



\*Social Care in hours contact number – 01226 772423 - out of hours contact number – 01226 787789

\*\*email [MASH@barnsley.gov.uk](mailto:MASH@barnsley.gov.uk) and BHNFT safeguarding team [barnsleysafeguardingchildren@nhs.net](mailto:barnsleysafeguardingchildren@nhs.net)